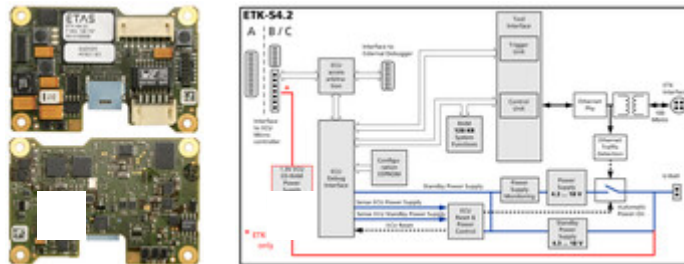


ETK-S4.2 – ECU Interface

Technical Data



CPU interface

Supported processors Infineon TC1766, TC1766ED, TC1767ED, TC1782ED, TC1796, TC1796ED, TC1797ED

For a complete list of supported microprocessors, please refer to the product's User's Guide.

Configuration Project-specific configuration for memory configurations stored in EEPROM

Board

Dimensions (HxWxD) approx. 9.8 x 40 x 60 mm/0.386 x 1.575 x 2.362 in

Power supply

Input voltage 4.3 V to 18 V

Stand-by: min. 4.3 V

Input current at 12 V approx. 100 mA normal operation

approx. 20 mA stand-by

Memory emulation

Emulation memory Processor-specific

Measured data
memory Processor-specific

Host interface

Serial interface 100 Mbit/s

Double-shielded line, max. 30 m/100 ft

Electrically isolated

Operation temperature

Temperature range -40 °C to +110 °C / -40 °F to +230 °F

This product has been developed and released for use in automotive applications. For usage in other domains please contact your ETAS representative.

Ordering Information



- 1 – Interface Connection
- 2 – ETK Connection (for all 100 Mbit ETKs)
- 3 – Power Supply Connection
- 4 – ECU Connection
- 5 – Ethernet PC Connection

Order Name	Short Name	Order Number
ETK-S4.2		
ETK-S4.2C Emulator Probe for the Infineon JTAG debug interface from AUDDO-MAX microprocessor, ECU adaption via 12 pin Erni and 7 pin JST plug	ETK-S4.2C	F-00K-106-737



Optional Accessories for ETK-S4.2

1 – Interface Connection (all 100 Mbit ETKs to ES59x, ES690, ES910)

ETK Interface Cable 100 Mbit/s, Lemo 1B FFG - CBM150-3 F-00K-102-556
 Lemo 1B FFG (4mc-4mc), 3 m



ETK Interface Cable 100 Mbit/s, Lemo 1B FFG - CBM150-5 F-00K-102-557
 Lemo 1B FFG (4mc-4mc), 5 m

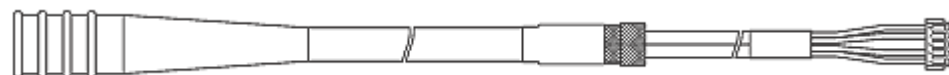


ETK Interface Cable 100 Mbit/s, Lemo 1B FFG - CBM150-10 F-00K-102-553
 Lemo 1B FFG (4mc-4mc), 10 m

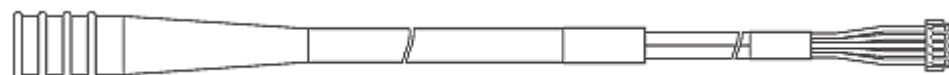


2 – ETK Connection (for all 100 Mbit ETKs)

ETK ECU Adapter Cable, Shield on ECU-Housing, KA54 F-00K-001-302
 Lemo 1B PHG - JST PHR (4fc-5fc), 0m6

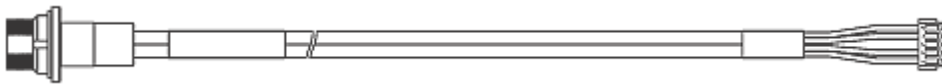


ETK ECU Adapter Cable, Lemo 1B PHG - JST PHR KA55 F-00K-001-303
 (4fc-5fc), 0m6



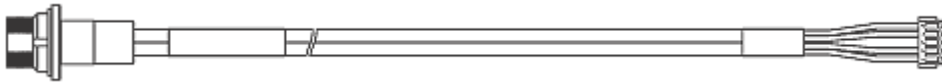
ETK ECU Adapter Cable, Shield on ECU-Housing,
Lemo 1B HMG - JST PHG (4fc-5fc), 0m085

CBAM200.2-0m085 F-00K-104-312



ETK ECU Adapter Cable, Shield on ECU-housing,
Lemo 1B HMG - JST PHG (4fc-5fc), 0m130

CBAM200-0m130 F-00K-104-852



ETK ECU Adapter Cable, pre-assembled into PG9
screwing, shield on ECU- Housing, Lemo 1B PHG -
JST PHR (4fc-5fc), 0m50

CBAM261-0m5

F-00K-107-754

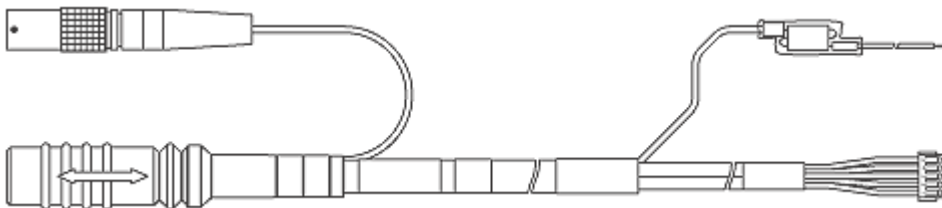


2&3 - Combined ETK ECU Adapter and Power Supply Cable (all 100 Mbit ETKs)

ETK ECU Adapter and Power Supply Cable, Lemo
1B PHG - JST PHR (4fc-5fc) / Lemo 0B PHG - open
wires (2fc-2c), 0m6

CBAM210-0m6

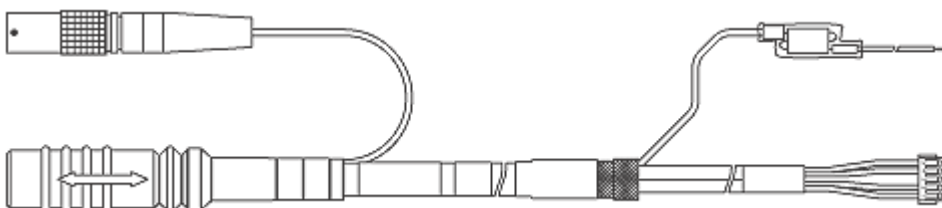
F-00K-104-873



ETK ECU Adapter and Power Supply Cable, Shield
on ECU-Housing, Lemo 1B PHG - JST PHR (4fc-5fc)
/ Lemo 0B PHG - open wires (2fc-2c), 0m60

CBAM220-0m6

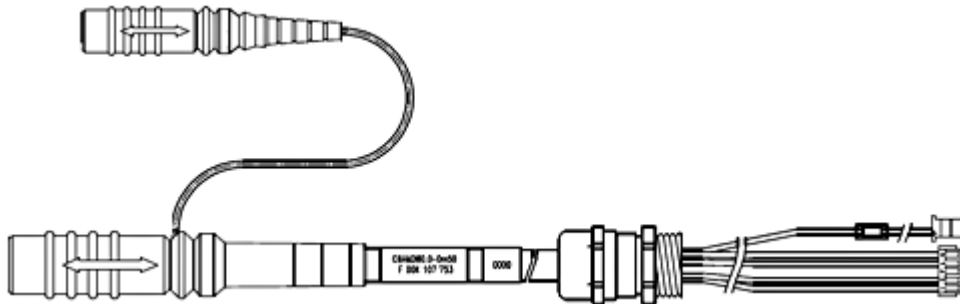
F-00K-105-075



ETK ECU Adapter and Power Supply Cable, pre-assembled into PG9 screwing, shield on ECU-Housing, Lemo 1B PHG - JST PHR (4fc-5fc) / Lemo 0B PHG - JST PAP (2fc-2fc), 0m50

CBAM260-0m5

F-00K-107-753



3 - Power Supply Connection

ETK Power Supply Cable with Filter Coil, JST PHR - open wires (2fc-2c), 0m19

ETV2

F-00K-000-593



ETK Power Supply Cable for External Supply, with Filter Coil, Lemo 0B EGG - open wire (2fc-1c), 0m2

KA50

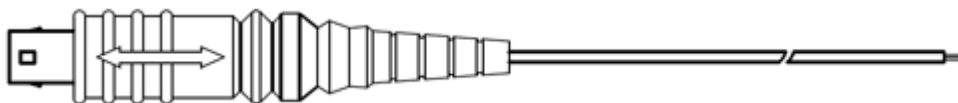
F-00K-000-940



External Power Supply Cable for ETKs, Lemo 0B - FGG open wires (2fc-1c), 2 m

K70.1

F-00K-109-270



ETK power supply for 6-36V DC input

ETP1

F-00K-000-624

ETK power supply for 4,3-36V DC input, with galvanic isolation

ETP2

F-00K-104-010

4 - ECU Connection (ETK-S4.2C)

ETA11 ETK ECU Adapter, Erni - Samtec (12fc - 10fc), 0m16

ETA11

F-00K-105-542

ETA15 ETK ECU Adapter with short ED supply and GND lines, JST PHR - open wires (7fc - 2c+5c), 0m25	ETA15	F-00K-106-773
--	-------	---------------

Debugger Connection

Debug Adapter from Infineon OCDS1-Plug to ETK	ETAF5.0	F-00K-104-220
---	---------	---------------

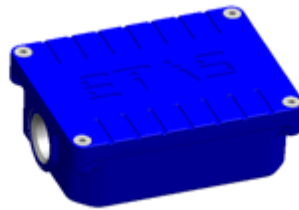
Microcontroller Power Supply for ECU (Microcontroller specific)

Power supply for ECU with 1,5V microcontroller	ETP4	F-00K-104-914
--	------	---------------

Power supply for ECU with 1,3V microcontroller	ETP5	F-00K-106-798
--	------	---------------

Housing

Water-proof case, designed for ETK-S4.x, ETK-S6.x and ETK-S2x	ETKS_C3	F-00K-107-683
---	---------	---------------



ECU Connection Protection Cap (for CBAM230, CBAM240)

Cap to protect open Lemo 1B sockets against dirt, cost effective	CAP_LEMO_1B_LC	F-00K-105-683
--	----------------	---------------



5 – Ethernet PC Connection

Further information on the Ethernet PC Connection, can be found in the [cable page Ethernet Connection](#).

Note: This list contains only a selection of available adapters. A comprehensive overview is available in the User Guide of each ETK.