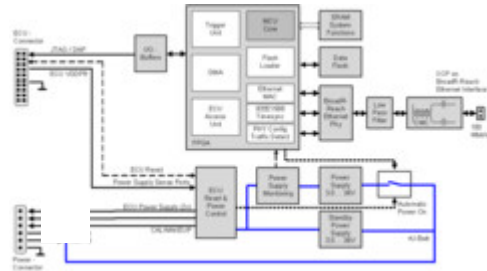


BR_XETK-S3.0



CPU interface

Supported processors

Infineon Aurix Family (TC2xx, TC3xx and TC4xx)

For a complete list of supported microprocessors, please refer to the product's user's guide.

Configuration

Project-specific configuration for memory configurations stored in EEPROM

Board

Dimensions (HxWxD)

8.7 x 38 x 33.5 mm / 0.352 x 1.496 x 1.318 in

Power supply

Input voltage

6.6 V to 36 V

Cranking voltage < 3 sec: 3V

Input current at 12 V

Approx. 135 mA normal operation

Approx. 40 mA normal stand-by

Memory emulation

Emulation memory Processor specific

Measured data
memory Processor specific

Host interface

Serial interface 100 Mbit/s

Double shielded line, max. 30 m/100 ft

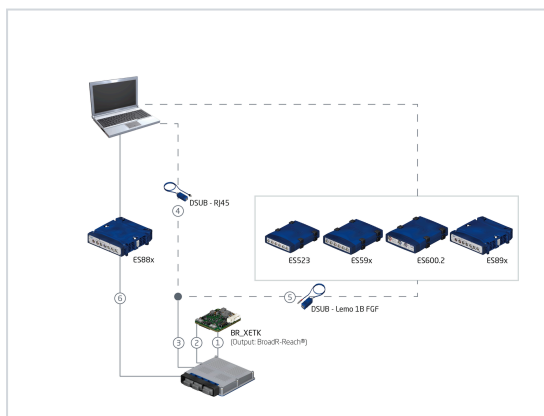
Electrically isolated

Operation temperature

Temperature range -40 °C to +110 °C / -40 °F to +230 °F

This product has been developed and released for use in automotive applications. For usage in other domains please contact your ETAS representative.

Ordering Information



1 – ECU Connection

2 – Automotive Ethernet Connection

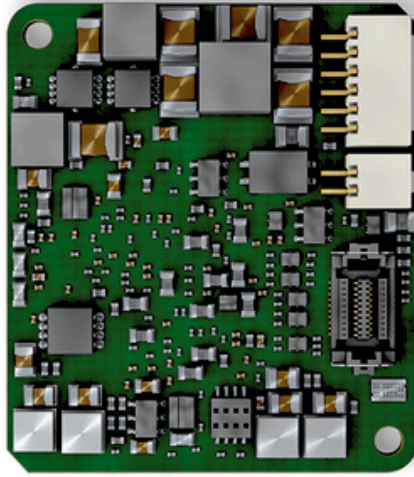
3 – Automotive Ethernet Connection

4 – Media Converter (PC Connection)

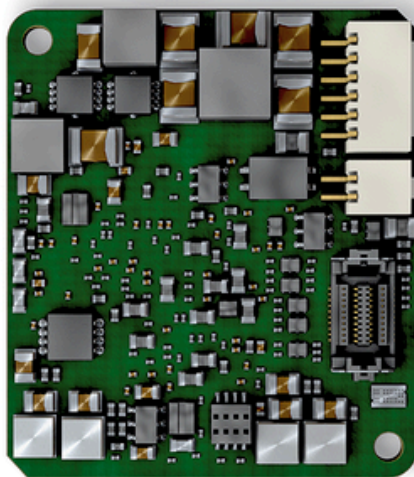
5 – Media Converter (ES523, ES59x, ES600, ES89x, ES910 Connection)

6 – Ethernet Connection with ES88x

Order Name	Short Name	Order Number
BR_XETK-S3.0		
BR_XETK-S3.0A Emulator Probe for the Infineon AURIX TC2xx/TC3xx microcontroller families, including gap pad	BR_XETK-S3.0A	F-00K-110-751



BR_XETK-S3.0C Emulator Probe for the Infineon AURIX TC4xx microcontroller family, including gap pad	BR_XETK-S3.0C	F-00K-113-470
---	---------------	---------------



Optional Accessories for BR_XETK-S3.0

1 - ECU Connection

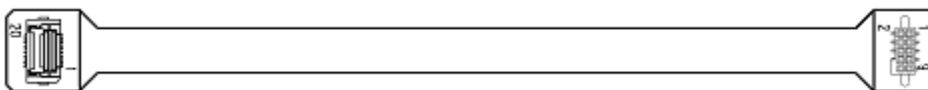
ETAM2 ETK ECU Adapter, MOLEX - open wires (6fc - 6c), 0m25	ETAM2	F-00K-109-306
--	-------	---------------



ETAM5 FETK ECU Adapter, MOLEX - MOLEX (6fc - 5fc+1c), 0m136	ETAM5	F-00K-110-101
---	-------	---------------



ETAM8A BR_XETK-S3/S4 ECU Adapter, FCI - SAMTEC SFM (20c - 10fc), 0m11	ETAM8A	F-00K-110-754
---	--------	---------------

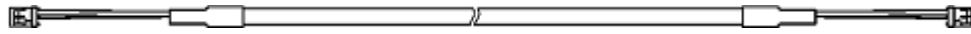


2 - Automotive Ethernet Connection

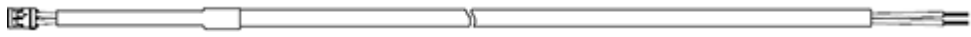
ETABR1 Automotive Ethernet interface cable, MOLEX à open wires (ECU), 0,3m (2fc - 2c) Single wires which need to be twisted while mounting	ETABR1	F-00K-109-771
--	--------	---------------



ETABR2 Automotive Ethernet interface cable, MOLEX à MOLEX (ECU), 0,17m (2fc - 2c) ETABR2 F-00K-111-118



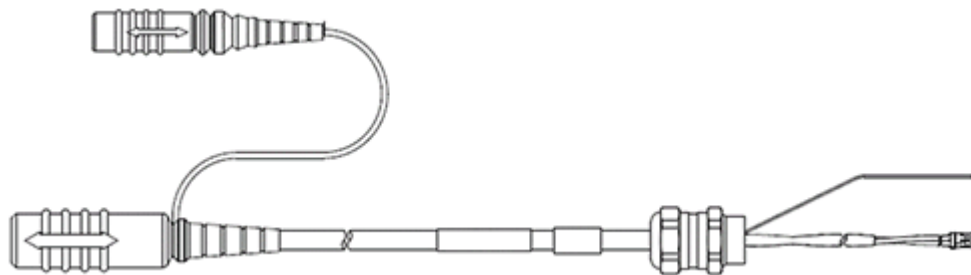
ETABR3 Automotive Ethernet Interface Cable, MOLEX - open wire (2fc-2c), 0m33 ETABR3 F-00K-111-964



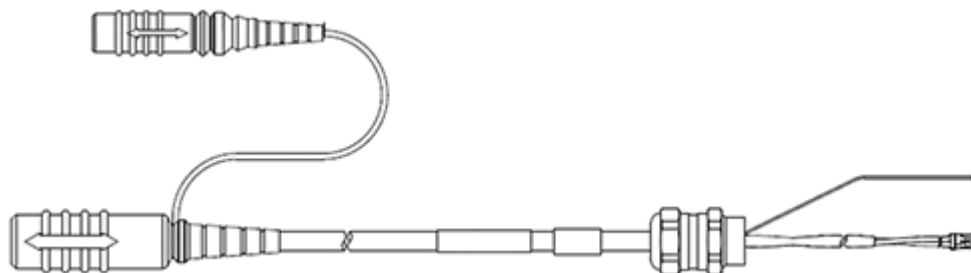
CBAM290 Automotive Ethernet interface cable, pre-assembled into M10 screwing, shield on ECU-Housing MOLEX à Lemo, 0,60m (2fc - 2c) CBAM290.1-0m6 F-00K-111-117



BR_XETK ECU Adapter and Power Supply Cable, pre-assembled into M12 screwing, shield on ECU housing, Lemo 1B PHA - MOLEX (2fc-2fc) / Lemo 1B PHG - open wire (2fc-1c), 0m6 CBAM295.1-0m6 F-00K-111-656



BR_XETK ECU Adapter and Power Supply Cable, pre-assembled into M12 screwing, shield on ECU housing, Lemo 1B PHA - MOLEX (2fc-2fc) / Lemo 1B PHG - open wire (2fc-1c), 1m8 CBAM295.1-1m8 F-00K-111-657



3 - Automotive Ethernet Connection

4 - Media Converter (PC Connection)

Media Converter Cable, DSUB - RJ45 (9mc-8mc), 1m CBEB100.1-1m0 F-00K-110-094



5 - Media Converter (ES523, ES59x, ES600, ES89x, ES910 Connection) [1]

ES165.1 Media Converter (1xAE) with Lemo connector ES165.1 F-00K-112-184

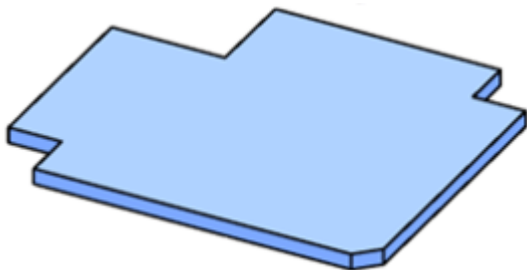


6 - Ethernet Connection to ES88x

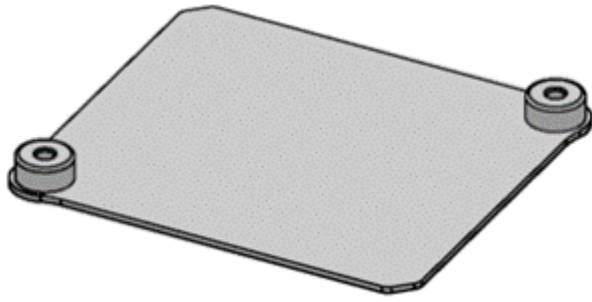
Automotive Ethernet Splitter Cable 100 Mbit/s,
Yamaichi YCP - 4x DSUB (8mc - 4x 9mc), 0m4 CBEB242.1-0m4 F-00K-111-123

Mechanical Accessories

Gap pad as spare part for BR_XETK-S3/S4 BR_XETK-S3_GP F-00K-110-752



Mounting bracket for BR_XETK-S3/S4 BR_XETK-S3_MB F-00K-110-753



[1] You can find the suitable adapter cable for the Media Converter to your BR_XETK on the [ES16x Ordering Information page](#).

Note: This list contains only a selection of available adapters. A comprehensive overview is available in the User Guide of each ETK.

