



Question:

How do I set the language in INCA V7.2/V7.3/V7.4 or MDA V7.2/V8?

- 1. Adjustment in INCA V7.3/V7.4**
- 2. Adjustment in INCA V7.2**
 - a) For an already registered user
 - b) For a new user (administration rights required)
- 3. Adjustment in MDA V8**
- 4. Adjustment in MDA V7.2**

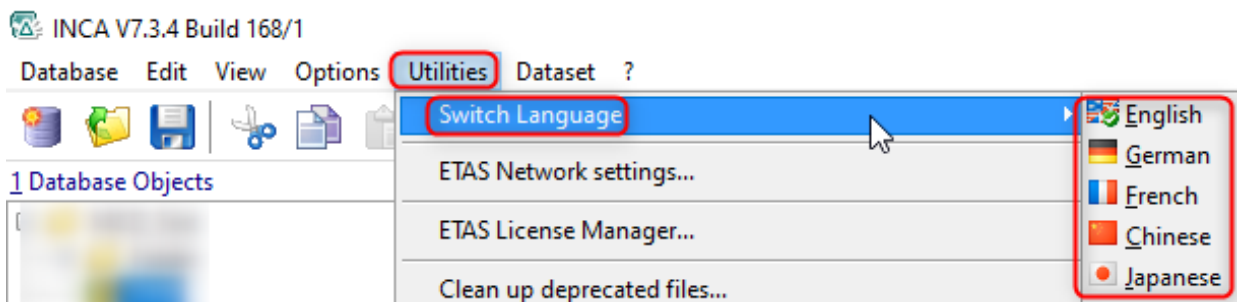


Answer:

To change the language in INCA and MDA, there are several possibilities, which are described below.

1. Adjustment in INCA V7.3/V7.4

Since INCA V7.3 SP2, you have the possibility to change the language in the INCA main menu.



INCA must be restarted to adopt the newly set language. The change may also affect an INCA V7.2 installation.

2. Adjustment in INCA V7.2

a) For an already registered user

Important: Close all ETAS applications

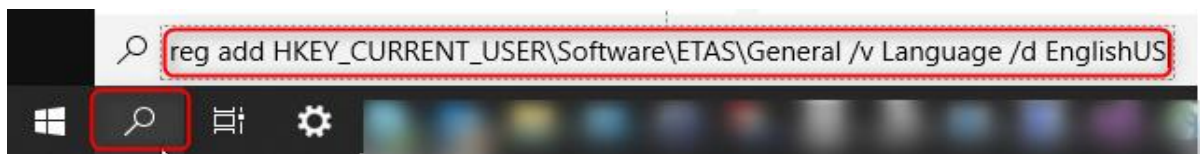
To change the language setting for an already registered INCA user, enter the string below into the Windows search field via the taskbar and confirm with the Enter key:

German:

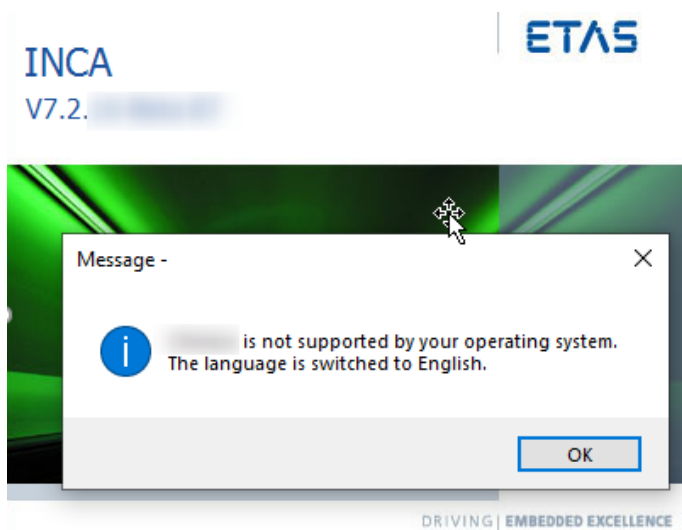
```
reg add HKEY_CURRENT_USER\Software\ETAS\General /v Language /d German
```

English:

```
reg add HKEY_CURRENT_USER\Software\ETAS\General /v Language /d EnglishUS
```



Besides German and English other languages such as French, Chinese and Japanese are available and must be supported by the operating system, otherwise INCA will automatically set the language to English.

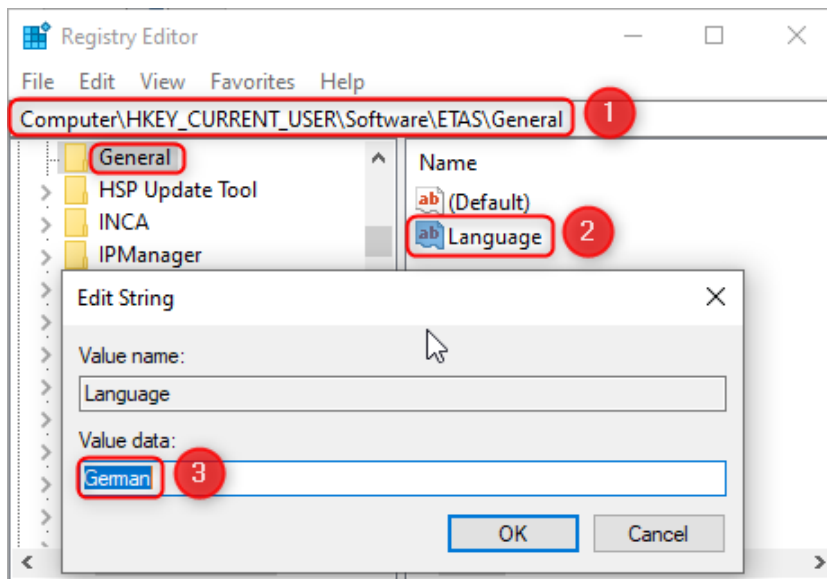


You also have the option to change the language in the Registry Editor.
To do this, enter **regedit** in the Windows search field and confirm with the Enter key.

Go to the following registry path:

Computer\HKEY_CURRENT_USER\Software\ETAS\General

Make the following changes as shown in the screenshot:



b) For new users (administration rights required)

Important: Close all ETAS applications

To define the language setting for all new INCA users, enter the string below into the Windows search field via the taskbar and confirm with the Enter key:

German:

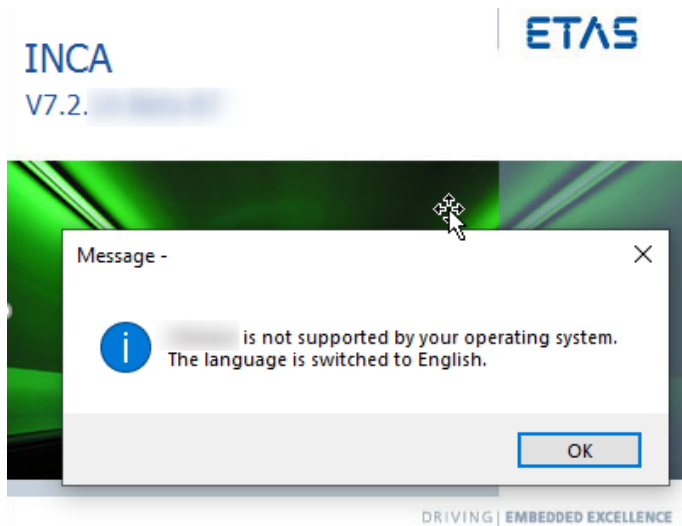
```
reg add HKEY_LOCAL_MACHINE\SOFTWARE\WOW6432Node\ETAS\General /v Language /d German
```

English:

```
reg add HKEY_LOCAL_MACHINE\SOFTWARE\WOW6432Node\ETAS\General /v Language /d EnglishUS
```



Besides German and English other languages such as French, Chinese and Japanese are available and must be supported by the operating system, otherwise INCA will automatically set the language to English.

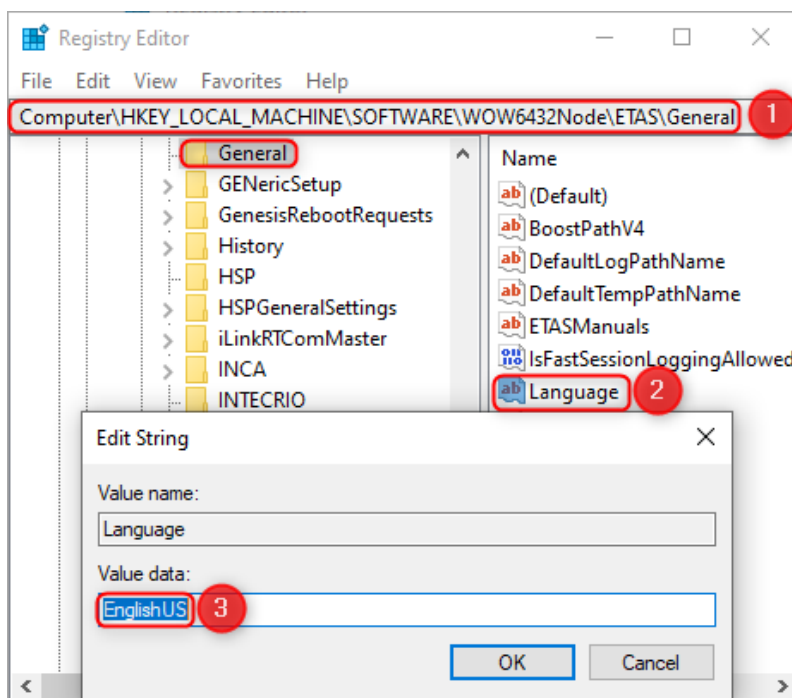


You also have the option to change the language in the Registry Editor. To do this, enter **regedit** in the Windows search field and confirm with the Enter key.

Go to the following registry path:

Computer\HKEY_LOCAL_MACHINE\SOFTWARE\WOW6432Node\ETAS\General

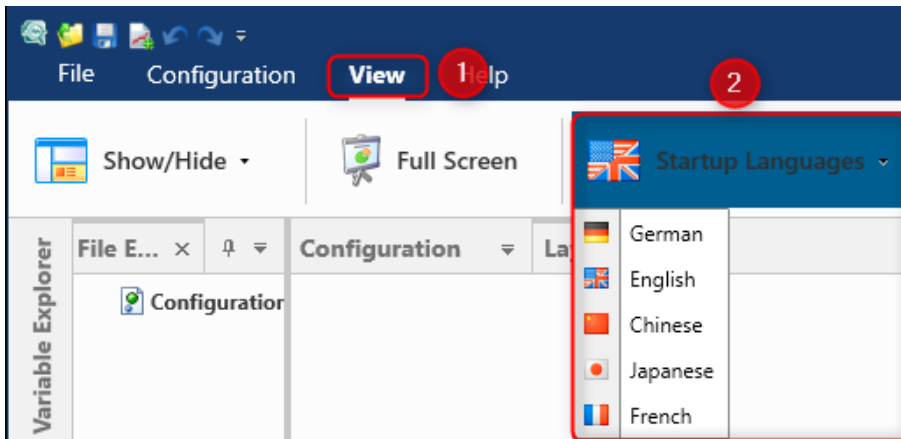
Make the following changes as shown in the screenshot:



3. Adjustment in MDA V8

Since MDA V8, you have the possibility to change the language via the menu items.

Changing the language in MDA V8 does not affect INCA V7.4, INCA V7.3, INCA V7.2 and MDA V7.2.

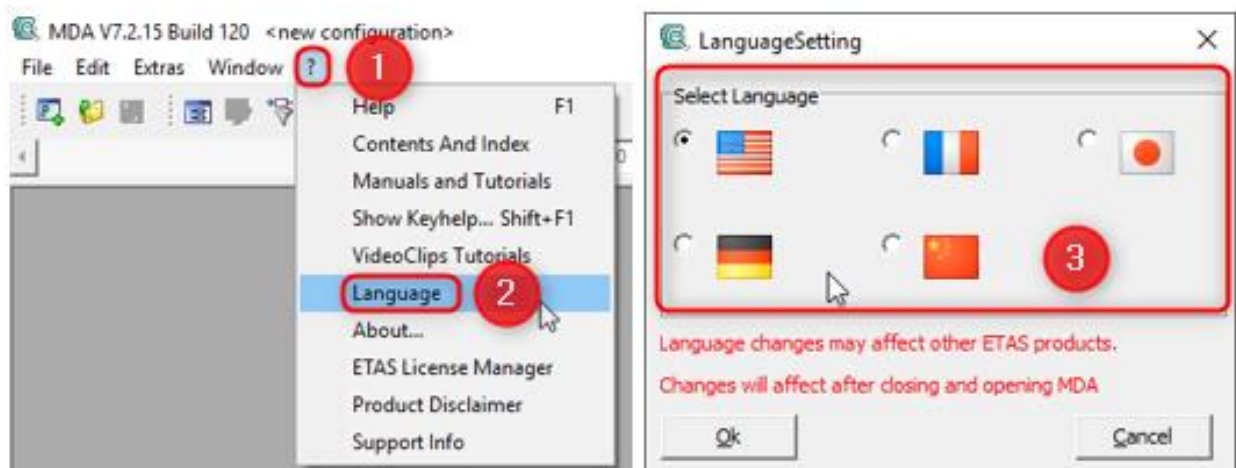


4. Adjustment in MDA V7.2

Since MDA V7.2 SP15, it is also possible to change the language via the menu items.

To do this, the desired language setting must be set and confirmed via the menu item **? Language**.

This change may also affect the installed INCA V7.2.





In case of further questions:

If you have any further questions, please do not hesitate to contact us.

The numbers of our support hotlines can be found at www.etas.com/en/hotlines.

This information (here referred to as „FAQ“) is provided without any (express or implied) warranty, guarantee or commitment regarding completeness or accuracy. Except in cases of willful damage, ETAS shall not be liable for losses and damages which may occur or result from the use of this information (including indirect, special or consequential damages).