

ES910: Logging



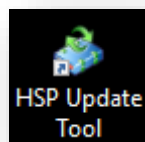
Question:

- Does the ES910 have a log file?
- How to access the log of an ES910?
- What kind of logging is available with the ES-910?

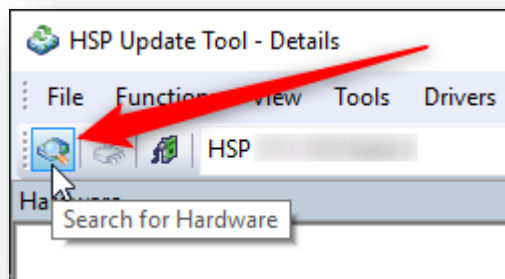


Answer:

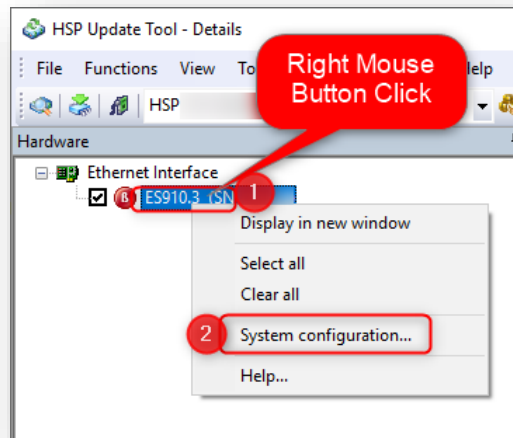
- The ES910 provides logging
1. Connect ES910 to your PC
 2. Turn on power supply for ES910
 3. Open the "**HSP Update Tool**"



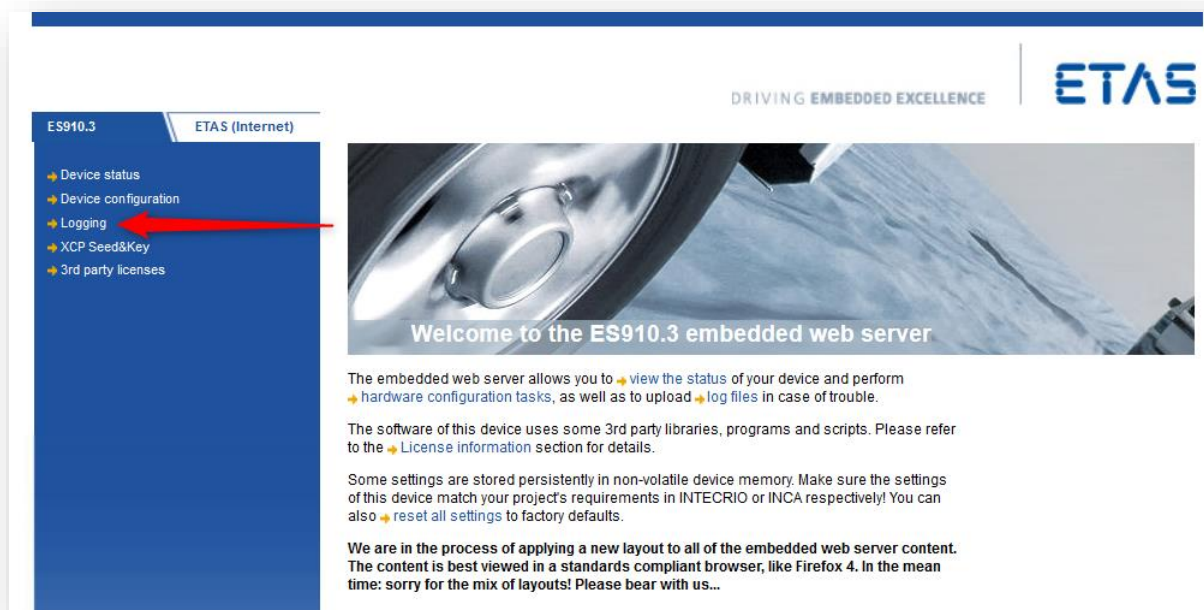
4. In **HSP Update Tool** → Click **Search for Hardware** button



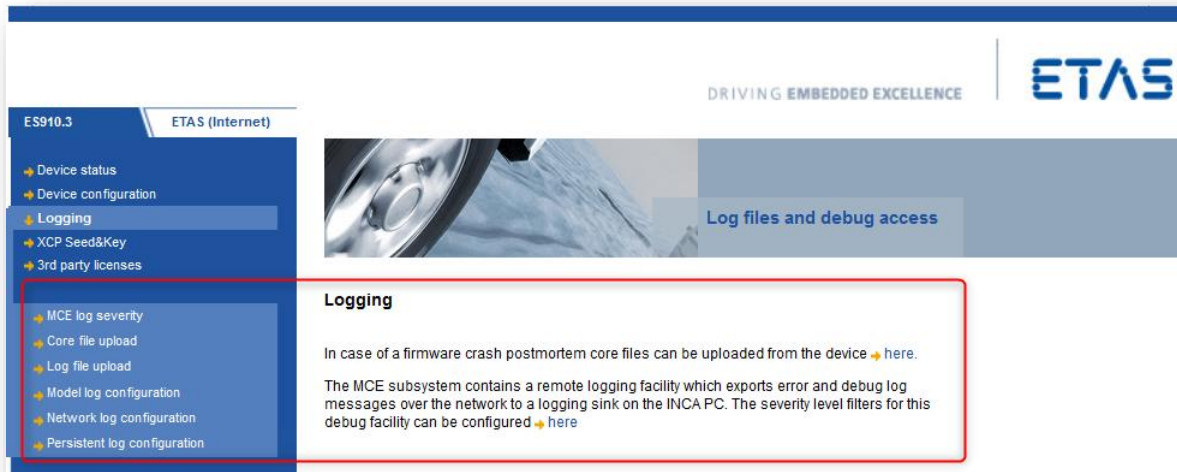
5. Under **Hardware** → On the **ES910** → Right mouse button click → **System configuration...**



6. In **web browser** → ES910 user interface → Click **Logging** menu entry



7. Result: **Logging menu** with several logging options is displayed



In case of further questions:

Please feel free to contact our Support Center, if you have further questions.
Here you can find all information: <http://www.etas.com/en/hotlines.php>

This information (here referred to as „FAQ“) is provided without any (express or implied) warranty, guarantee or commitment regarding completeness or accuracy. Except in cases of willful damage, ETAS shall not be liable for losses and damages which may occur or result from the use of this information (including indirect, special or consequential damages).