



Question:

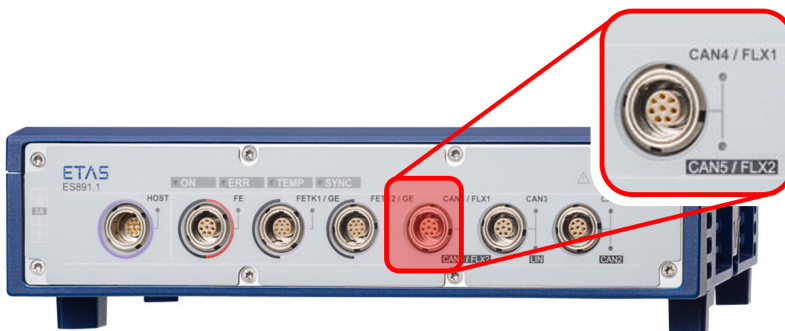
How do I set up ES891 for FlexRay measurement?



Answer:

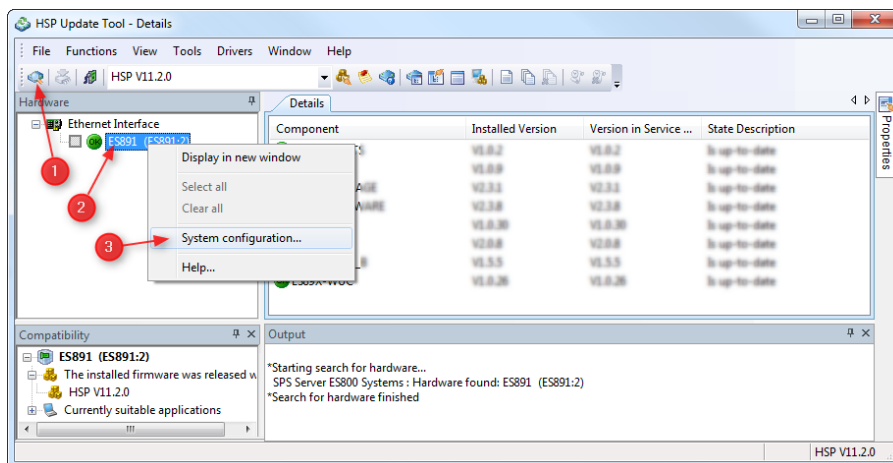
FlexRay measurement has to be activated in the ES891 Web Interface

By default the CAN/FLX interface of ES891.1 is set on CAN and FlexRay operation has to be activated manually.



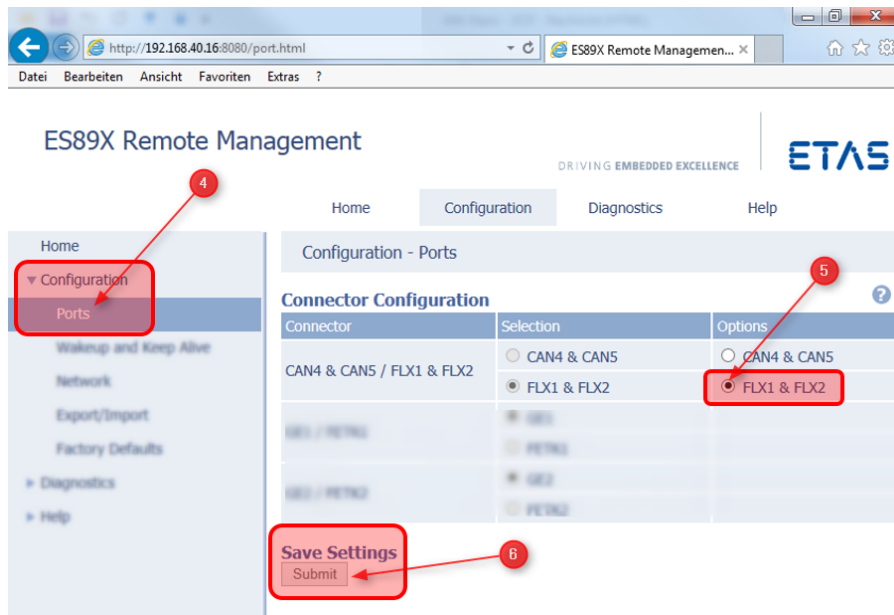
Here is the step-by-step guide:

1. open HSP Update Tool and search for hardware
2. right click on "ES891"
3. open "System configuration..."



4. in the Web-Interface: highlight the menu item "Ports" (a subsection of "Configuration")
5. in Connector Configuration: change setting to "FLX1 & FLX2"

6. press the "Submit" button to save the settings



7. Any modification of the operating mode requires a restart of the hardware system.



Additional information:

The interface "CAN/FLX" of the ES891.1 module can be operated optionally as CAN FD interface or as FlexRay interface. The configuration dialog is available in the module's web interface. Any modification of the operating mode requires a restart of the hardware system.

For more information please see "ES800 System User's Guide"



In case of further questions:

You will find further FAQ here: www.etas.com/en/faq

Please feel free to contact our Support Center, if you have further questions.

Here you can find all information: <http://www.etas.com/en/hotlines.php>

This information (here referred to as „FAQ“) is provided without any (express or implied) warranty, guarantee or commitment regarding completeness or accuracy. Except in cases of willful damage, ETAS shall not be liable for losses and damages which may occur or result from the use of this information (including indirect, special or consequential damages).