

## Wake up ES820 with Bus Signals

### Do you know this challenge?

You are a calibration engineer and you want your DriveRecorder to “wake up” as soon as a signal is detected on the bus (e.g. as you open the vehicle door). The reason is that you do not want to lose any information even before the engine is started.

### Our Solution – ES820 & ES89x Wake-up feature

The new Premium Hardware Series (ES8xx class) are able to recognize ETH, CAN and FLX traffic on the bus, even when the devices are in passive (or standby) mode.

### How does it work?

#### An example of our solution: Wake-up on FlexRay (via ES891)

First of all, you have to configure the ES891 device through its WebUI (reachable from HSP when the device is connected).

The FLX channels on ES891 must be enabled (from Ports menu item) along with the Wakeup feature (from Wakeup and KeepAlive) as in Figure 1.

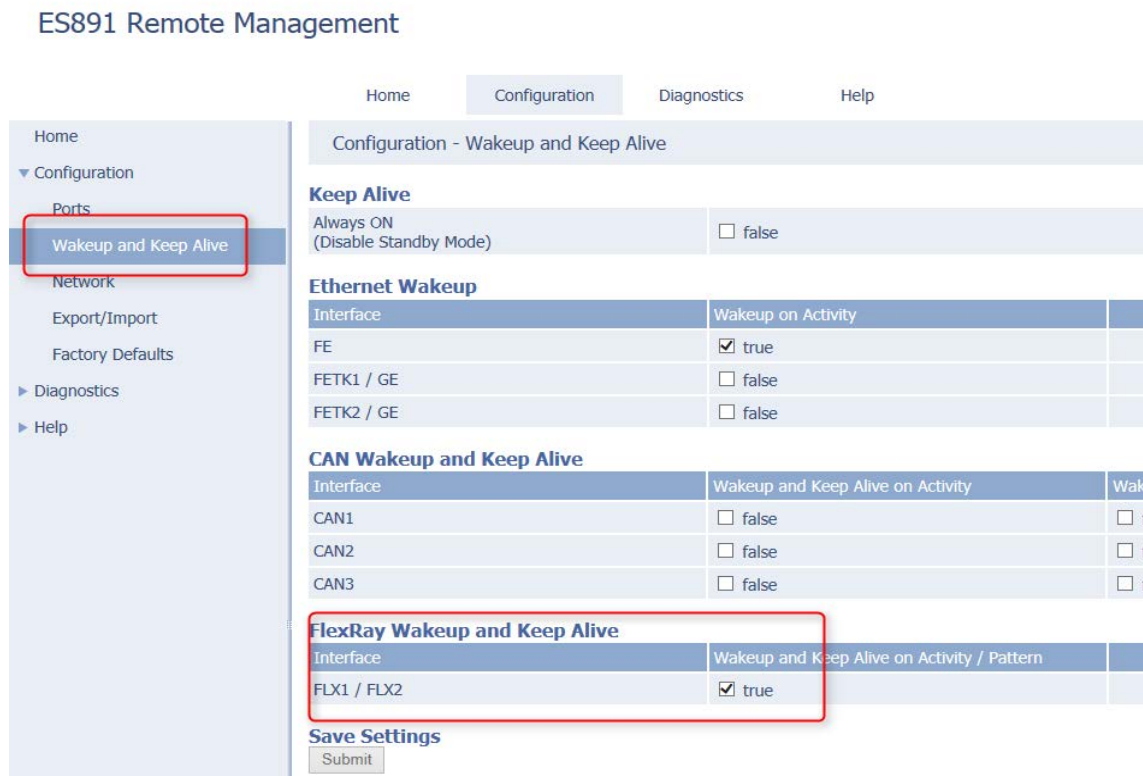


Figure 1

After that, you have to configure the ES820 with the DriveRecorder. In the Hardware Configuration dialog, *Allow Trigger of Recording on Wakeup on ETH* must be checked in and applied to the ES820 (Figure 2).

# DriveRecorder Wake-up on ETH, CAN and FlexRay

## Wake up ES820 with Bus Signals

*Hint:* Configure some minutes for the *delay action*, so that the ES820 does not go in standby if traffic is not detected for a certain period of time (in the example, 2 Minutes).

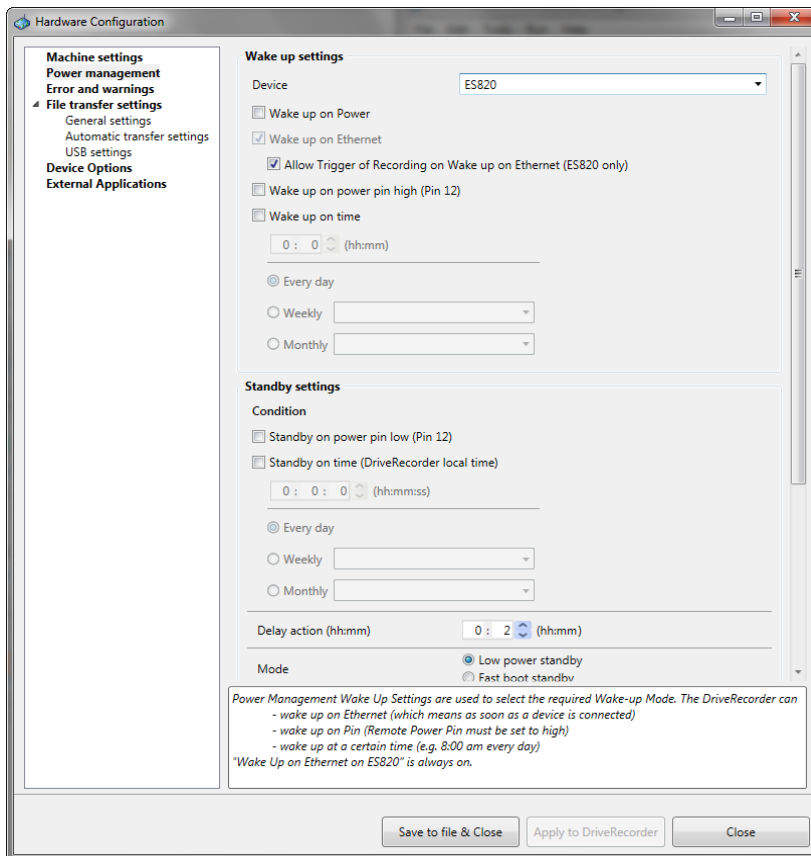


Figure 2

Finally, you have to configure your recording job in the DriveRecorder ConfiguratorTool and set the starting condition as *Automeasure* (Figure 3).

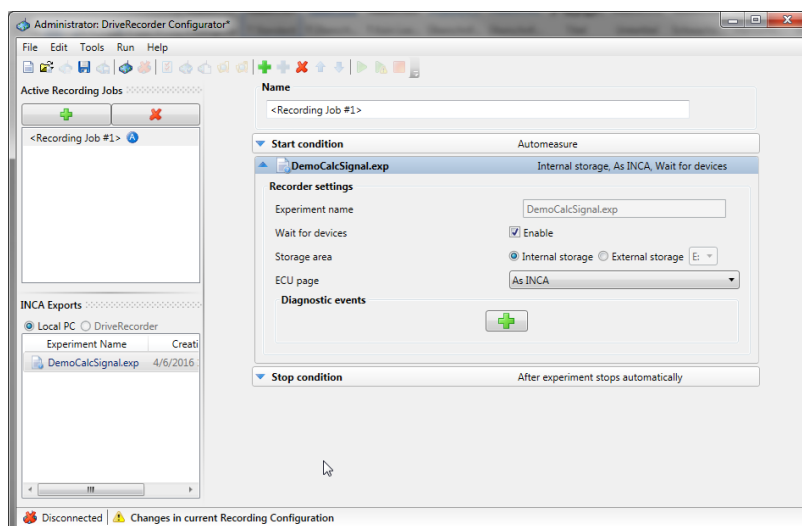


Figure 3

*Apply the recording job.* And now, you are ready to go with your DriveRecorder!

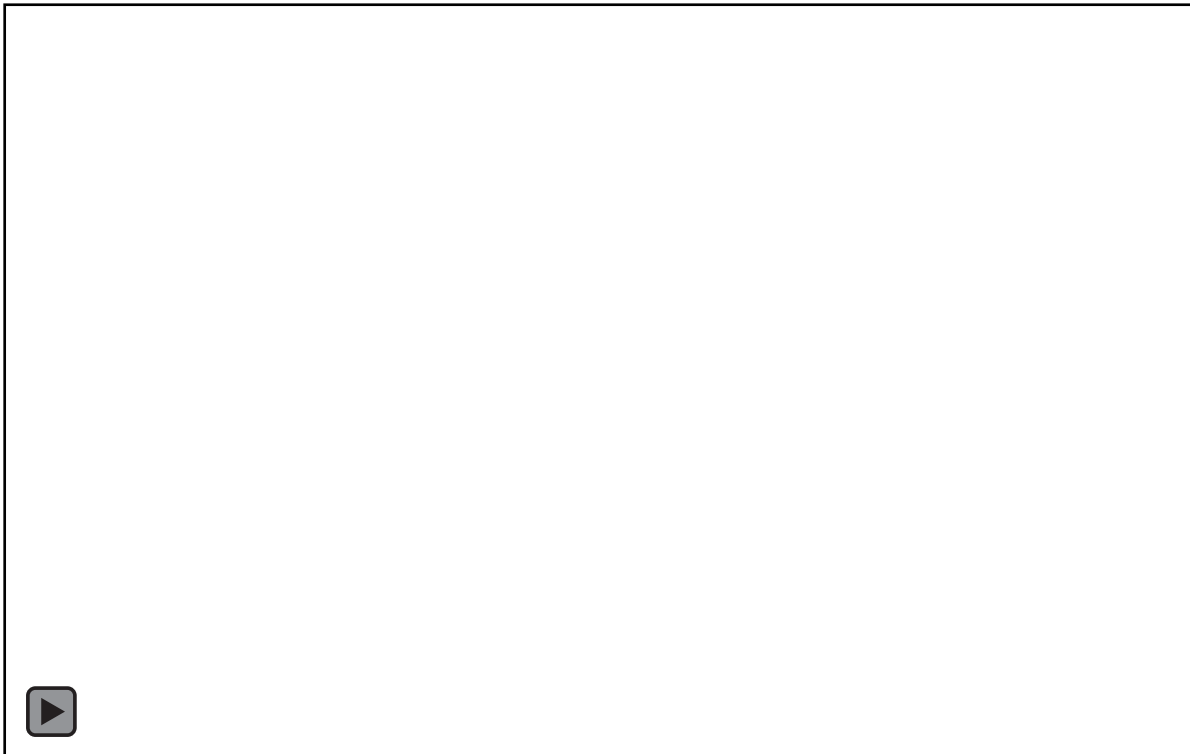


### Tools used

- HSP 11.6.0 (for evoking the ES891 Remote Management)
- DriveRecorder ConfiguratorTool 7.2.7
- ES820 SP7
- ES891

### Downloads

- Video: ES820\_wakeup\_on\_FLX\_EN.mp4 (or download the file: [Download Center](#))



### Your ETAS Contact

Chiara Fiorini  
Tel. +49 711 34232996  
[chiara.fiorini@etas.com](mailto:chiara.fiorini@etas.com)

[www.etas.com](http://www.etas.com)