

A decorative graphic consisting of two red lines that intersect. One line starts from the top right and goes towards the center, while the other starts from the top left and goes towards the center. They meet at a point marked with a small white circle. A second red line extends from this intersection point towards the bottom left, ending in another small white circle. The background is a gradient of blue, transitioning from a darker shade at the top to a lighter shade at the bottom.

# ETAS ES593.1-D

## Prototyping and Interface Module

### User Guide

## **Copyright**

---

The data in this document may not be altered or amended without special notification from ETAS GmbH. ETAS GmbH undertakes no further obligation in relation to this document. The software described in it can only be used if the customer is in possession of a general license agreement or single license. Using and copying is only allowed in concurrence with the specifications stipulated in the contract.

Under no circumstances may any part of this document be copied, reproduced, transmitted, stored in a retrieval system or translated into another language without the express written permission of ETAS GmbH.

© **Copyright 2021** ETAS GmbH, Stuttgart

The names and designations used in this document are trademarks or brands belonging to the respective owners.

ES593.1-D - User Guide R09 EN - 02.2021

# Contents

---

|          |                                                                    |           |
|----------|--------------------------------------------------------------------|-----------|
| <b>1</b> | <b>About this Document</b> .....                                   | <b>6</b>  |
| 1.1      | Classification of Safety Messages .....                            | 6         |
| 1.2      | Presentation of Instructions .....                                 | 6         |
| 1.3      | Typographical Conventions .....                                    | 7         |
| 1.4      | Presentation of Supporting Information .....                       | 7         |
| <b>2</b> | <b>About this Manual</b> .....                                     | <b>8</b>  |
| 2.1      | Scope of Supply .....                                              | 8         |
| 2.2      | Additional Information .....                                       | 8         |
| <b>3</b> | <b>Basic Safety Notices</b> .....                                  | <b>9</b>  |
| 3.1      | General Safety Information .....                                   | 9         |
| 3.2      | Requirements for Users and Duties for Operators .....              | 9         |
| 3.3      | Intended Use .....                                                 | 9         |
| <b>4</b> | <b>Hardware Description</b> .....                                  | <b>14</b> |
| 4.1      | Overview .....                                                     | 14        |
| 4.2      | Features .....                                                     | 14        |
| 4.3      | Housing .....                                                      | 15        |
| 4.4      | Interfaces .....                                                   | 15        |
|          | 4.4.1 Front Panel .....                                            | 15        |
|          | 4.4.2 Back Panel .....                                             | 16        |
| 4.5      | LEDs .....                                                         | 16        |
|          | 4.5.1 Flash Codes .....                                            | 16        |
|          | 4.5.2 Operational State of the Module .....                        | 17        |
|          | 4.5.3 Functional State of Individual Interfaces .....              | 18        |
| <b>5</b> | <b>Functional Description</b> .....                                | <b>20</b> |
| 5.1      | Block Diagram .....                                                | 20        |
| 5.2      | Power Supply (7-29V DC) .....                                      | 20        |
| 5.3      | Ethernet Switch .....                                              | 20        |
|          | 5.3.1 Host Port (HOST) .....                                       | 21        |
|          | 5.3.2 Ethernet Ports (ETH1 and ETH2) .....                         | 21        |
| 5.4      | ETK Interface (ETK) .....                                          | 22        |
|          | 5.4.1 Initialization .....                                         | 22        |
|          | 5.4.2 Operating Modes .....                                        | 22        |
| 5.5      | CAN Interface (CAN1/CAN3, CAN2/CAN4) .....                         | 23        |
|          | 5.5.1 Operating Modes .....                                        | 23        |
|          | 5.5.2 Feature .....                                                | 23        |
|          | 5.5.3 "Wake-Up" Function .....                                     | 23        |
|          | 5.5.4 „CAN Pre-Buffering“ Function (Buffering of CAN Frames) ..... | 23        |
|          | 5.5.5 Bus Terminating Resistor .....                               | 24        |
| 5.6      | Time Synchronization .....                                         | 24        |
| 5.7      | "Wake-Up" Function .....                                           | 24        |

|          |                                                              |           |
|----------|--------------------------------------------------------------|-----------|
| 5.8      | Firmware Update .....                                        | 25        |
| <b>6</b> | <b>Getting Started .....</b>                                 | <b>26</b> |
| 6.1      | Assembly and Locking .....                                   | 26        |
| 6.1.1    | General Installation Recommendations .....                   | 26        |
| 6.1.2    | Fixing a Module onto a Carrier System .....                  | 26        |
| 6.1.3    | Connecting Several Modules Mechanically .....                | 27        |
| 6.2      | Applications .....                                           | 28        |
| 6.3      | Wiring .....                                                 | 29        |
| 6.3.1    | "HOST" Port .....                                            | 30        |
| 6.3.2    | "7-29V" Port .....                                           | 30        |
| 6.3.3    | "ETH1" and "ETH2" Port .....                                 | 30        |
| 6.4      | Configuring the ES593.1-D .....                              | 31        |
| 6.4.1    | Web Interface .....                                          | 32        |
| 6.4.2    | Launching the ES593.1-D Web Interface .....                  | 32        |
| 6.4.3    | Configuring the "Wake Up" Function .....                     | 32        |
| <b>7</b> | <b>Troubleshooting Problems .....</b>                        | <b>33</b> |
| 7.1      | Error LEDs .....                                             | 33        |
| 7.2      | Troubleshooting ES593.1-D Problems .....                     | 33        |
| 7.3      | Problems and Solutions .....                                 | 34        |
| 7.3.1    | Network Adapter cannot be selected via Network Manager ..... | 34        |
| 7.3.2    | Search for Ethernet Hardware Fails .....                     | 35        |
| 7.3.3    | Personal Firewall Blocks Communication .....                 | 37        |
| <b>8</b> | <b>Technical Data .....</b>                                  | <b>42</b> |
| 8.1      | General Data .....                                           | 42        |
| 8.1.1    | Product Labeling .....                                       | 42        |
| 8.1.2    | Fulfilled Standards and Norms .....                          | 43        |
| 8.1.3    | Environmental Conditions .....                               | 43        |
| 8.1.4    | Maintenance the Product .....                                | 43        |
| 8.1.5    | Cleaning the Product .....                                   | 43        |
| 8.1.6    | Mechanical Data .....                                        | 43        |
| 8.2      | RoHS Conformity .....                                        | 44        |
| 8.3      | CE conformity .....                                          | 44        |
| 8.4      | UKCA conformity .....                                        | 44        |
| 8.5      | KCC conformity .....                                         | 44        |
| 8.6      | Taking the Product Back and Recycling .....                  | 44        |
| 8.7      | Declarable Substances .....                                  | 45        |
| 8.8      | Use of Open Source Software .....                            | 45        |
| 8.9      | System Requirements .....                                    | 45        |
| 8.9.1    | Hardware .....                                               | 45        |
| 8.9.2    | Supported Applications and Software Requirements .....       | 46        |
| 8.10     | Electrical Data .....                                        | 47        |
| 8.10.1   | Power Supply .....                                           | 47        |
| 8.10.2   | Host Interface (HOST) .....                                  | 47        |
| 8.10.3   | Ethernet Interfaces (ETH1 and ETH2) .....                    | 48        |
| 8.10.4   | ETK Interface (ETK) .....                                    | 49        |
| 8.10.5   | CAN Interfaces (CAN1/CAN3 and CAN2/CAN4) .....               | 49        |

|           |                                                 |           |
|-----------|-------------------------------------------------|-----------|
| 8.11      | Pin Assignment .....                            | 50        |
| 8.11.1    | Power Supply Interface (7-29V) .....            | 50        |
| 8.11.2    | Host Interface (HOST).....                      | 50        |
| 8.11.3    | Ethernet Interfaces (ETH1 and ETH2) .....       | 51        |
| 8.11.4    | ETK Interface (ETK).....                        | 51        |
| 8.11.5    | CAN Interface (CAN1/CAN3) .....                 | 52        |
| 8.11.6    | CAN Interface (CAN2/CAN4) .....                 | 52        |
| <b>9</b>  | <b>Cable and Accessories .....</b>              | <b>53</b> |
| 9.1       | Cable for the "7-29 V DC" Connection .....      | 53        |
| 9.1.1     | CBP120 Cable .....                              | 54        |
| 9.1.2     | CBP1205 Cable .....                             | 55        |
| 9.2       | HOST Interface Cable .....                      | 55        |
| 9.3       | ETH1 und ETH2 Interface Cable.....              | 56        |
| 9.3.1     | Ethernet Connection and Power Supply Cable..... | 56        |
| 9.3.2     | Ethernet Connection Cable.....                  | 58        |
| 9.3.3     | Ethernet Connection Adapter Cable .....         | 58        |
| 9.4       | ETK Interface Cable .....                       | 59        |
| 9.5       | CAN/LIN Interface Cable and Adapter.....        | 59        |
| 9.5.1     | CAN Interface Cable .....                       | 59        |
| 9.5.2     | CBCFI100 Cable .....                            | 61        |
| 9.5.3     | CAN Termination Resistor .....                  | 63        |
| <b>10</b> | <b>Ordering Information .....</b>               | <b>64</b> |
| 10.1      | ES593.1-D .....                                 | 64        |
| 10.1.1    | ES593.1-D with CBP120 Power Supply Cable .....  | 64        |
| 10.1.2    | ES593.1-D with CBP1205 Power Supply Cable ..... | 64        |
| 10.2      | Cable and Accessoires .....                     | 65        |
| 10.2.1    | Cable for the "7-29 V DC" Connection.....       | 65        |
| 10.2.2    | "HOST" Interface Cable .....                    | 65        |
| 10.2.3    | "ETH1 and ETH2" Interface Cable.....            | 65        |
| 10.2.4    | "ETK" Interface Cable .....                     | 66        |
| 10.2.5    | "CAN/LIN" Interface Cable and Adapter.....      | 66        |
| 10.2.6    | Housing Accessories .....                       | 67        |
| 10.2.7    | Software .....                                  | 67        |
| <b>11</b> | <b>Contact Information.....</b>                 | <b>68</b> |
|           | <b>Figures .....</b>                            | <b>69</b> |
|           | <b>Index .....</b>                              | <b>70</b> |

# 1 About this Document

---

## 1.1 Classification of Safety Messages

---

The safety messages used here warn of dangers that can lead to personal injury or damage to property:



### **DANGER**

---

indicates a hazardous situation with a high risk of death or serious injury if not avoided



### **WARNING**

---

indicates a hazardous situation of medium risk which could result in death or serious injury if not avoided.



### **CAUTION**

---

indicates a hazardous situation of low risk which may result in minor or moderate injury if not avoided.

### **NOTICE**

---

indicates a situation which may result in damage to property if not avoided.

## 1.2 Presentation of Instructions

---

The target to be achieved is defined in the heading. The necessary steps for his are in a step-by-step guide:

### Target definition

1. Step 1
2. Step 2
3. Step 3
- > Result

## 1.3 Typographical Conventions

### Hardware

|               |                                                |
|---------------|------------------------------------------------|
| <b>Bold</b>   | Menu commands, buttons, labels of the product  |
| <i>Italic</i> | Emphasis on content and newly introduced terms |

## 1.4 Presentation of Supporting Information



### **NOTE**

Contains additional supporting information.

## 2 About this Manual

---

This chapter contains information about the following topics:

- "Scope of Supply" on page 8
- "Additional Information" on page 8

### 2.1 Scope of Supply

---

Prior to the initial commissioning of the module, please check whether the module was delivered with all required components and cables (see chapter 10.1 on page 64).

Additional cables and adapters can be obtained separately from ETAS. A list of available accessories and their order designation is located in chapter "Cable and Accessoires" on page 65 of this manual or in the ETAS product catalog.

### 2.2 Additional Information

---

The configuration instructions for the module under INCA can be found in the corresponding software documentation.



## 3 Basic Safety Notices

---

This chapter contains information about the following topics:

- "General Safety Information" on page 9
- "Requirements for Users and Duties for Operators" on page 9
- "Intended Use" on page 9

### 3.1 General Safety Information

---

Please observe the Product Safety Notices ("ETAS Safety Notice") and the following safety notices to avoid health issues or damage to the device.



#### **NOTE**

Carefully read the documentation (Product Safety Advice and this User's Guide) that belongs to the product prior to the startup.

ETAS GmbH does not assume any liability for damages resulting from improper handling, unintended use or non-observance of the safety precautions.

### 3.2 Requirements for Users and Duties for Operators

---

The product may be assembled, operated and maintained only if you have the necessary qualification and experience for this product. Improper use or use by a user without sufficient qualification can lead to damages or injuries to one's health or damages to property.

#### **General safety at work**

The existing regulations for safety at work and accident prevention must be followed. All applicable regulations and statutes regarding operation must be strictly followed when using this product.

### 3.3 Intended Use

---

#### **Application area of the product**

This product was developed and approved for applications in the automotive sector. The module is suitable for use in interiors, in the passenger cell or in the trunk of vehicles. The module is not suitable for installation in the engine compartment and similar environments. For use in other application areas, please contact your ETAS contact partner.

#### **Requirements for the technical state of the product**

The product is designed in accordance with state-of-the-art technology and recognized safety rules. The product may be operated only in a technically flawless condition and according to the intended purpose and with regard to safety

and dangers as stated in the respective product documentation. If the product is not used according to its intended purpose, the protection of the product may be impaired.

### **Requirements for operation**

- Use the product only according to the specifications in the corresponding User's Guide. With any deviating operation, the product safety is no longer ensured.
- Observe the requirements on the ambient conditions.
- Do not use the product in a wet or damp environment.
- Do not use the product in potentially explosive atmospheres.

### **Electrical safety and power supply**

- Observe the regulations applicable at the operating location concerning electrical safety as well as the laws and regulations concerning work safety!
- Connect only current circuits with safety extra-low voltage in accordance with EN 61140 (degree of protection III) to the connections of the module.
- Ensure that the connection and setting values are being followed (see the information in the chapter "Technical data").
- Do not apply any voltages to the connections of the module that do not correspond to the specifications of the respective connection.

### **Power supply**

- The power supply for the product must be safely disconnected from the supply voltage. For example, use a car battery or a suitable lab power supply.
- Use only lab power supplies with double protection to the supply network (with double insulation/reinforced insulation (DI/ RI)).
- The lab power supply must be approved for an operating altitude of 5000 m and for an ambient temperature of up to 70 °C.
- In regular operation of the modules as well as very long standby operation, a discharge of the vehicle battery is possible.

### **Connection to the power supply**

- The power cable must not be connected directly to the vehicle battery or lab power supply, but via a fuse of up to 20 A.
- Ensure that the connections of the lab power supply, the power supply at the module and the vehicle battery are easily accessible!
- Route the power cord in such a way that it is protected against abrasion, damages, deformation and kinking. Do not place any objects on the power cord!

**DANGER****Dangerous electrical voltage!**

Connect the power cable only with a suitable vehicle battery or with a suitable lab power supply! The connection to power outlets is not allowed!

To prevent an inadvertent insertion in power outlets, ETAS recommends to equip the power cables with safety banana plugs in areas with power outlets.

**Disconnecting from the power supply**

The module does not have an operating voltage switch. The module can be de-energized as follows:

- Disconnecting the module from the lab power supply
  - Separating device is the lab plug of the power cord or
  - Separating device is the plug of the power cord at the connection of the module
- Disconnecting the module from the vehicle battery
  - Separating device is the lab plug of the power cord or
  - Separating device is the plug of the power cord at the connection of the module
- Disconnecting the vehicle battery.

**Approved cables**

- Use exclusively ETAS cables at the connections of the module!
- Adhere to the maximum permissible cable lengths!
- Do not use any damaged cables! Cables may be repaired only by ETAS!
- Never apply force to insert a plug into a socket. Ensure that there is no contamination in and on the connection, that the plug fits the socket, and that you correctly aligned the plugs with the connection.

**Requirements for the location**

- Position the module or the module stack on a smooth, level and solid underground.
- The module or the module stack must always be securely fastened.

**Fixing the modules on a carrier system**

- When selecting the carrier system, observe the static and dynamic forces that could be created by the module or the module stack on the carrier system.

### Requirements on the ventilation

- Keep the module away from heat sources and protect it against direct exposure to the sun.
- The free space above and behind the module must be selected so that sufficient air circulation is ensured.

### Assembling (interconnecting) the modules

- Prior to assembling (interconnecting) or separating a module stack, the modules must be disconnected from the supply voltage or they have to be in the standby operating mode.

### Transport

- Stack and connect the modules only at the location of the startup!
- Do not transport the modules at the cable of the module or any other cables.

### Maintenance

The product is maintenance-free.

### Repair

If an ETAS hardware product should require a repair, return the product to ETAS.

### Cleaning the module housing

- Use a dry or lightly moistened, soft, lint-free cloth for cleaning the module housing.
- Do not use any sprays, solvents or abrasive cleaners which could damage the housing.
- Ensure that no moisture enters the housing. Never spray cleaning agents directly onto the module.

### Ambient conditions

The housing and the connectors of the module as well as the plug connectors of the cables meet the degree of protection IP30.

### Opening the module



#### **CAUTION**

#### **Damage to the module and loss of properties based on IP30!**

Do not open or change the module housing!

Work on the module housing may only be performed by ETAS.

## Potential equalization



### **CAUTION**

**Potential equalization in the vehicle is possible via the shield of the connecting cables of the modules!**

Install the modules only at locations with the same electrical potential or isolate the modules from the installation location.

## Cabling

For detailed information about cabling, see the User's Guide of the module.

## 4 Hardware Description

---

This chapter provides you with an overview of the ES593.1-D with information on the housing, serial number, ports and LEDs.

### 4.1 Overview

---

The ES59x line is a range of powerful ECU and bus interface modules. The ES59x modules have an upstream Ethernet interface that guarantees data exchange with the host PC or with a Drive Recorder. The ES593.1-D module has two downstream Ethernet interfaces that can be connected with ES59x, ES600, measurement and interface modules.



**Fig. 4-1** View of the Device

Individual measurement, calibration and rapid prototyping modules are easy to combine with ES59x line modules. ECUs that have an XETK, or ECUs that have their own Ethernet interface can be connected directly with an ES593.1-D module and communicate with INCA via Ethernet. The ES593.1-D has the ECU interfaces ETK and CAN.

Two of the four CAN interfaces additionally offer a "Wake-Up" function and buffer CAN messages until a ES720 Drive Recorder connected to the ES593.1-D starts the data recording.

If necessary, systems can be cascaded using ES59x nodes. The Ethernet switch guarantees the time-synchronous sampling of all measurement channels – even in sizeable module networks.

The ES593.1-D module and the relevant cables are intended for use in the lab, on the test bench and in the passenger cell of vehicles.

### 4.2 Features

---

Overview of the major features of the ES593.1-D:

- Ethernet switch with a 10/100 Mbit/s data rate:
  - One host port (upstream)
  - Two ports for compatible modules (downstream)
  - Can be cascaded up to 15 modules
  - Automatic standby function

- Precise synchronization of all connected modules and their measurement channels
- ETK interface
  - Measure and calibration applications
- Four independent CAN interfaces:
  - CAN High Speed (max. 1 MBaud)
  - CAN protocols CAN V2.0a (Standard Identifier with 11-bit) and CAN V2.0b (Extended Identifier with 29-bit)
  - "Wake-Up" function (two CAN interfaces)
  - Buffering of CAN messages for applications with the ES720 Drive Recorder (two CAN interfaces)

Additional features of the module:

- Module suitable for use in automotive applications; suitable for use in the development environment and in the vehicle on test drives.
  - Channels galvanically isolated from each other, from the device ground and from the supply voltage
  - Not sensitive to environmental conditions (temperature, EMC)
  - Wide supply voltage range
  - High mechanical stability and durability
- Part of the ETAS Tool Suite

For the complete technical data of the ES593.1-D, refer to the chapter "Technical Data" on page 42.

## 4.3 Housing

---

Standard housing with interfaces on the front and rear of the device is used for the ES593.1-D. The sturdy metal housing of the ES593.1-D has nonskid plastic feet.

It can be easily screwed onto a carrier system for installation in a vehicle or in the lab. The housings of this device family can also quickly and easily be connected to one another (see the chapter 6.1 on page 26).

The ES593.1-D is intended for use in the lab, on the test bench and in the passenger cell of vehicles.

## 4.4 Interfaces

---

### 4.4.1 Front Panel

The following interfaces are on the front panel of the ES593.1-D:

- HOST (Ethernet, SYNC-IN)
- ETK (1 x ETK)
- ETH1 (Ethernet, SYNC-OUT)
- ETH2 (Ethernet, SYNC-OUT)
- CAN2/CAN4 (1 x CAN und 1 x CAN)
- CAN1/CAN3 (1 x CAN und 1 x CAN)

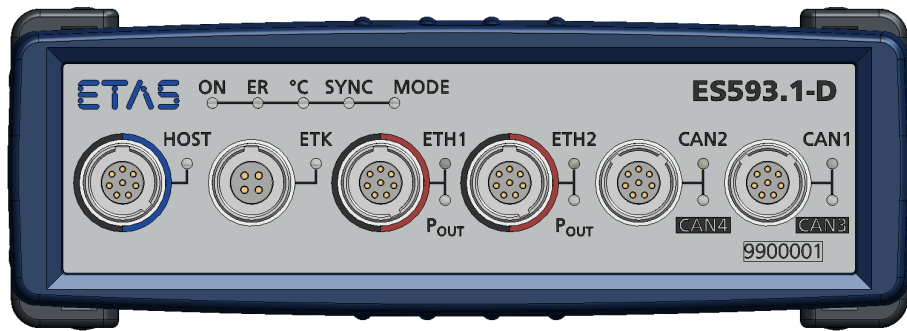


Fig. 4-2 Front Panel

#### 4.4.2 Back Panel

The interface 7-29V (power supply) is on the back panel of the ES593.1-D.



Fig. 4-3 Back Panel

### 4.5 LEDs

#### 4.5.1 Flash Codes

The ES593.1-D is equipped with LEDs, which indicate the operational state of the module, as well as with LEDs which display the function of individual interfaces. The following flash codes are used for the LEDs:

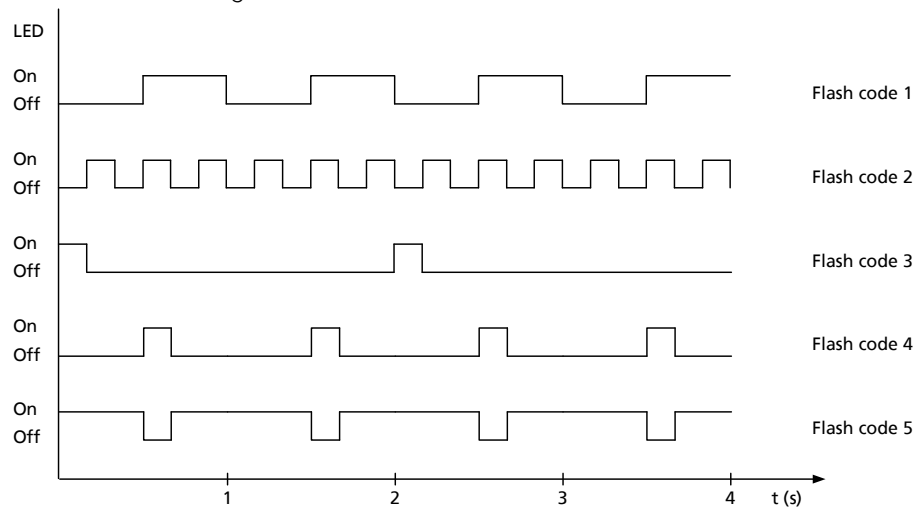


Fig. 4-4 Flash Codes



## 4.5.2 Operational State of the Module

Four LEDs can be found top left on the front panel of the ES593.1-D (see Fig. 4-2 on page 16). They indicate operational, error and synchronization states.

- **ON**: power supply and operational state
- **ER**: error states or firmware update
- **°C**: temperature inside the housing
- **SYNC**: synchronization function of the module (master or slave) and the synchronization state
- **MODE**: function "Pre-Buffering" (interfaces CAN1 and CAN2)

| LED       | Display                           | Operational State                                                                                                                                                                                         |
|-----------|-----------------------------------|-----------------------------------------------------------------------------------------------------------------------------------------------------------------------------------------------------------|
| <b>ON</b> | Green                             | The module is powered on.                                                                                                                                                                                 |
|           | Green, flashing<br>(Flash code 3) | The module is on "Standby", the power consumption is minimal. The module needs a wakeup event to enter the normal operation mode.                                                                         |
|           | Off                               | The module is not powered.                                                                                                                                                                                |
| <b>ER</b> | Red                               | Module is currently booting or booting was unsuccessful.                                                                                                                                                  |
|           | Red, flashing<br>(Flash code 1)   | Internal device software error, core file created.                                                                                                                                                        |
|           | Red, flashing<br>(Flash code 2)   | Firmware update is being executed.                                                                                                                                                                        |
|           | Off                               | No error                                                                                                                                                                                                  |
| <b>°C</b> | Red                               | Temperature inside the housing has exceeded the critical level and the module powered down; the module is powered on again if the temperature inside the housing has reached the normal operational range |
|           | Red<br>(Flash code 2)             | Temperature inside the housing has reached a critical level. The module does not shut down any functionality.                                                                                             |
|           | Off                               | Temperature inside the housing is in normal operational range.                                                                                                                                            |

| LED         | Display                                                          | Operational State                                                                                                           |
|-------------|------------------------------------------------------------------|-----------------------------------------------------------------------------------------------------------------------------|
| <b>SYNC</b> | Blue, flashing (Flash code 4), fully bright                      | The module is a synchronization master; the module is not synchronized externally                                           |
|             | Blue, flashing (Flash code 5), semi and fully bright alternately | The module is a synchronization slave; the module is synchronized externally at the HOST or at the ETH1 or at the ETH2 port |
|             | Off                                                              | No synchronization                                                                                                          |
| <b>MODE</b> | Green                                                            | Function "CAN Pre-Buffering" for the interfaces CAN1 and/ or CAN2 is activated in INCA (HWC)                                |
|             | Off                                                              | Function "CAN Pre-Buffering" for the interfaces CAN1 and/ or CAN2 is deactivated in INCA (HWC) or in the web interface      |

### 4.5.3 Functional State of Individual Interfaces

LEDs assigned to the interfaces of the module can be found on the front panel of the device (see Fig. 4-2 on page 16). If the ES593.1-D is powered on (operational state "On") they indicate the following functional states at the assigned interfaces:

#### HOST Interface

An LED **HOST** is assigned to the interface HOST.

| LED         | Display          | Functional State                    |
|-------------|------------------|-------------------------------------|
| <b>HOST</b> | Yellow, flashing | Communication at the interface HOST |
|             | Off              | Communication interrupted           |

#### ETK Interface

An LED **ETK** is assigned to the interface ETK.

| LED        | Display          | Functional State                   |
|------------|------------------|------------------------------------|
| <b>ETK</b> | Yellow, flashing | Communication at the interface ETK |
|            | Off              | Communication interrupted          |

### ETH1 Interface

An LED **ETH1** and an LED **POUT** are assigned to the interface ETH1.

| LED         | Display          | Functional State                                                              |
|-------------|------------------|-------------------------------------------------------------------------------|
| <b>ETH1</b> | Yellow, flashing | Communication at the interface ETH1                                           |
|             | Off              | Communication interrupted                                                     |
| <b>POUT</b> | Green            | Power supply output at the interface ETH1 is switched on                      |
|             | Red              | Overload by connected module at the power supply output at the interface ETH1 |
|             | Off              | Power supply output at the interface ETH1 is switched off                     |

### ETH2 Interface

An LED **ETH2** and an LED **POUT** are assigned to the interface ETH1.

| LED         | Display          | Functional State                                                              |
|-------------|------------------|-------------------------------------------------------------------------------|
| <b>ETH2</b> | Yellow, flashing | Communication at the interface ETH2                                           |
|             | Off              | Communication interrupted                                                     |
| <b>POUT</b> | Green            | Power supply output at the interface ETH2 is switched on                      |
|             | Red              | Overload by connected module at the power supply output at the interface ETH2 |
|             | Off              | Power supply output at the interface ETH2 is switched off                     |

### CAN2/CAN4 Interface

An LED **CAN2** is assigned to the interface CAN2 and an LED **CAN4** is assigned to the interface CAN4.

| LED         | Display          | Functional State                    |
|-------------|------------------|-------------------------------------|
| <b>CAN2</b> | Yellow, flashing | Communication at the interface CAN2 |
|             | Off              | Communication interrupted           |
| <b>CAN4</b> | Yellow, flashing | Communication at the interface CAN4 |
|             | Off              | Communication interrupted           |

### CAN1/CAN3 Interface

An LED **CAN1** is assigned to the interface CAN1 and an LED **CAN3** is assigned to the interface LIN1.

| LED         | Display          | Functional State                    |
|-------------|------------------|-------------------------------------|
| <b>CAN1</b> | Yellow, flashing | Communication at the interface CAN1 |
|             | Off              | Communication interrupted           |
| <b>CAN3</b> | Yellow, flashing | Communication at the interface CAN3 |
|             | Off              | Communication interrupted           |

## 5 Functional Description

This chapter describes the block diagram, power supply, Ethernet switch, module network, time synchronization, ECU interfaces and the firmware update.

### 5.1 Block Diagram

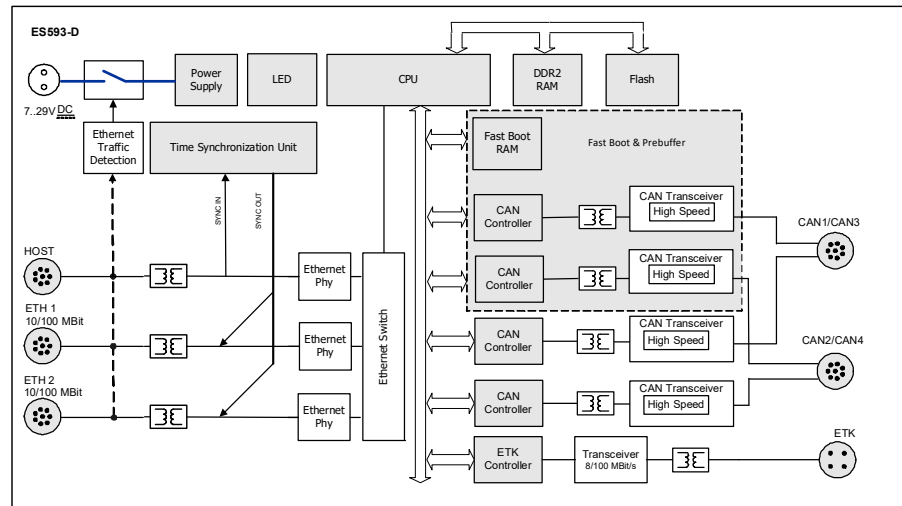


Fig. 5-1 Block Diagram

To fulfill the operation demands in the vehicle, the interfaces of the ES593.1-D are each routed to an Lemo socket.

### 5.2 Power Supply (7-29V DC)

The power supply interface (7-29V DC) is routed to a 2-pin connector (Lemo socket) on the back panel of the module. Power is supplied to the module via an external power supply or vehicle battery.

#### NOTE

The ES593.1-D must be physically disconnected from all supply voltages so the module is not supplied with power.

When the ES593.1-D is connected to the operating voltage and there is an Ethernet connection at HOST, the module boots. If there is no Ethernet connection, the module changes to "Standby."

### 5.3 Ethernet Switch

The integrated Ethernet switch is used for the connection of the ES593.1-D module and other measurement or interface modules to a user PC. Data from the connected modules is acquired synchronously (ETAS device synchronization, see chapter 5.6 on page 24). The Ethernet switch can be cascaded with other network modules so that you can create larger blocks of measurement and interface modules.

The switch is equipped with Ethernet interfaces in accordance with the standard 10/100BaseT that can be operated with either 10 or 100 Mbit/s, half or full duplex. The switchover takes place automatically.

All switch interfaces are galvanically isolated from each other and from the power supply.

### 5.3.1 Host Port (HOST)

The upstream Ethernet interface HOST combines the ES593.1-D module with the user PC or with a downstream Ethernet interface of a further module. This interface allows the ETAS software tools access to the connected modules.

#### "Wake-Up" Function

The Ethernet interface HOST supports the "Wake-Up" function (see chapter 5.7 on page 24).

#### Compatible Modules

A list of compatible modules can be found in chapter 8.10.2 on page 47.

### 5.3.2 Ethernet Ports (ETH1 and ETH2)

The ES593.1-D module provides two downstream Ethernet interfaces for further modules. ECUs that have an XETK or their own Ethernet interface can be connected directly with a ES593.1-D module and communicate with the calibration software via XCP-on-Ethernet.

#### Module Network

The downstream Ethernet interfaces ETH1 and ETH2 connect the ES593.1-D module to other ES600 modules, measurement, calibration and rapid prototyping modules. Large blocks of measurement and interfaces modules can be created as the modules can be cascaded.

#### Power Supply of connected Modules

The ES593.1-D module can additionally power ES4xx modules, ES6xx modules or XETKs via the Ethernet connection cable. Take a note of the maximum output current at the Ethernet ports when the modules are cascaded.

Other modules connected via Ethernet cable must be wired separately to the power supply.

#### "Wake-Up" Function

The Ethernet interfaces ETH1 and ETH2 support the "Wake-Up" function (see chapter 5.7 on page 24).

#### Compatible Modules

A list of compatible modules can be found in chapter 8.10.3 on page 48.

## 5.4 ETK Interface (ETK)

The ES593.1-D has one ETK interface which is routed to a 4-pin ETK connector (Lemo socket) on the front panel. The interface is galvanically isolated from the other interfaces of the ES593.1-D.

The ETK interface of the ES593.1-D supports the ECU application via the emulator test probe (ETK).

### NOTE

Please note that the ES593.1-D does not support all connected ETK types (see chapter 8.10.4 on page 49). Take a look at the ETAS website for detailed information on the ETKs supported by the ES593.1-D.

### 5.4.1 Initialization

If an ETK type supported by the ES593.1-D is connected to the ETK interface it is recognized automatically. The ETK interface is automatically initialized.

If an ETK type which is not supported by the ES593.1-D is connected to the ETK interface the overall system behaves, as if no ETK is connected. No specific error message is generated.

### 5.4.2 Operating Modes

In addition to single transfer for application with the ETK, the ES593.1-D supports data transfer in block mode. The ES593.1-D module usually works in block mode; single mode is supported for compatibility reasons.

The following table lists the features of the individual operating modes for the ETK interface.

|                  | Operating Mode of the ETK Interface |                |                |
|------------------|-------------------------------------|----------------|----------------|
|                  | Basic                               | Compatibility  | Advanced       |
| No. of variables | 29/45/45                            | Extended       | Configurable   |
| Rate             | 3                                   | 3              | 16             |
| ETK Speed        | 8 Mbit/s                            | 8/100 Mbit/s   | 100 Mbit/s     |
| ETK Transfer     | Single                              | Block          | Block          |
| AML Version      | V1.0 or higher                      | V1.0 or higher | V1.2 or higher |

#### “Basic” Operating Mode

When using the “Basic” operating mode, older projects are supported without any change. All ETK interface hardware can be used.

#### “Compatibility” Operating Mode

An important feature of the “Compatibility” operating mode is block transfer. The block transfer between the ETK and the ES593.1-D is activated automatically. This means the following advantages:

- Extended number of variables per measure rate,
- Considerably faster download times for code and data to the ECU and
- Considerably improved transfer times for rapid prototyping rates.

### “Advanced” Mode

The “Advanced” operating mode provides a number of other possibilities. The 100 Mbit/s Block ETK protocol results in increased ETK interface performance. The most important advantages in comparison to the “Compatibility” operating mode are:

- 16 rates for measuring
- the possibility to configure the number of variables per measure rate

## 5.5 CAN Interface (CAN1/CAN3, CAN2/CAN4)

The ES593.1-D has four CAN interfaces. One each of the CAN interfaces is routed to the two 8-pin CAN1/CAN3 and CAN2/CAN4 connectors (Lemo socket) on the front panel.

CAN1 to CAN4 are complete independent CAN channels with separated connections and CAN controllers. The CAN interfaces produce a simple and direct connection between the ES593.1-D and the CAN network.

The interfaces are galvanically isolated from each other and from the other interfaces of the ES593.1-D.

### NOTE

The four interfaces CAN1 to CAN4 can be configured and used simultaneously and independently of one another.

### 5.5.1 Operating Modes

The CAN interfaces of the ES593.1-D can be operated in High-Speed CAN link (ISO 11898-2).

### 5.5.2 Feature

You can find a list of CAN applications supported by the ES593.1-D in chapter 8.9.2 on page 46.

### 5.5.3 "Wake-Up" Function

The CAN interfaces CAN1 and CAN2 support the "Wake-Up" function (see chapter 5.7 on page 24).

### 5.5.4 „CAN Pre-Buffering“ Function (Buffering of CAN Frames)

The functions "Wake-Up" and "CAN Pre-Buffering" are supported by both CAN interfaces CAN1 and CAN2. They enable the recording of CAN messages as of approximately 100 ms after the CAN communication start.

If you want to record messages including a timestamp directly after the communication start on your CAN bus, as for example in cold start experiments, the time the ES593.1-D requires for data receiving and processing after being waked up by the CAN messages has to be bridged.

With the function "CAN Pre-Buffering" enabled, the ES593.1-D stores the CAN messages received at the interfaces CAN1 and CAN2 in a buffer, until a ES720 Drive Recorder connected to the module starts the data recording.

The function "CAN Pre-Buffering" can be configured for both interfaces CAN1 and CAN2 independently of one another in the application software INCA (HWC).

### 5.5.5 Bus Terminating Resistor

The High-Speed operating mode of the CAN interface requires the use of bus termination resistors.

In accordance with the CAN specification, a bus termination resistor of 120 Ohm is required at each of the two open ends of the bus. This has to be connected to the cable or to the connector. ETAS supplies cables and termination resistors of 120 Ohm for setting up CAN networks.

## 5.6 Time Synchronization

---

The modules provide a global clock pulse to compare the measurement channels in a module network.

Modules connected to the HOST interface can synchronize the ES593.1-D (SYNC-IN). If no synchronization signal is received at the HOST interface, the ES593.1-D acts as master module for synchronization.

The time synchronization unit of the ES593.1-D master synchronizes the connected modules via the Ethernet lines. The synchronization signal is relayed to connected modules at the ETH1 and ETH2 interfaces (SYNC-OUT). The slave modules adapt to the clock pulse specified by the master module.

The periodic synchronization signal is superimposed onto the Ethernet signals without affecting data transfer. This excludes the possibility of a phase shift between the individual measure signals, even when measurements are taken from different modules.

The data of all connected modules of the ES4xx, ES51x and ES6xx lines is acquired synchronously (ETAS device synchronization).

## 5.7 "Wake-Up" Function

---

Energy consumption must be as low as possible when used in the vehicle because the measuring equipment is powered by a battery. This is why the ES593.1-D module is equipped with a link signal detector for an automatic power-saving feature at the following interfaces:

- HOST
- ETH1
- ETH2
- CAN1
- CAN2

Using the function "Wake-up", the module can automatically switch between the operational states "Standby" and "On" and start the measurement autonomously after switch-on.



The ES593.1-D and modules connected to it automatically switch to "Standby" if none of these interfaces receive link signals for a particular length of time or the host computer is powered off or disconnected. As soon as link signals are received by at least one of these interfaces or the host computer is active once more, the system automatically switches to "On" ("Wake-Up" function), thereby automatically switching on the ETAS modules connected to the measurement system.

 **NOTE**

The automatic powering-on of the ES593.1-D via the Ethernet wake-up is possible at any of the Ethernet ports.

The "Wake-Up" function of the Ethernet interfaces can be configured in the web interface of the ES593.1-D (see chapter 6.4 on page 31).

The "Wake-Up" function can be configured, activated and deactivated for both interfaces CAN1 and CAN2 independently of one another in the application software INCA (HWC) or in the web interface.

 **NOTE**

The Ethernet adapter of the connected PC has to be configured accordingly for it to be able to send link pulses.

## 5.8 Firmware Update

The firmware of the ES593.1-D can be updated by the user so that future versions of the module can also be implemented. The firmware is updated on the connected PC using service software "Hardware Service Pack" (HSP).

 **NOTE**

Neither the power supply nor the Ethernet connection can be interrupted during a firmware update!

## 6 Getting Started

The "Getting Started" chapter includes a description of the assembly, application examples, as well as notes on cabling and configuration of the ES593.1-D.

### 6.1 Assembly and Locking

#### 6.1.1 General Installation Recommendations



#### **CAUTION**

**The module can be damaged or destroyed.**

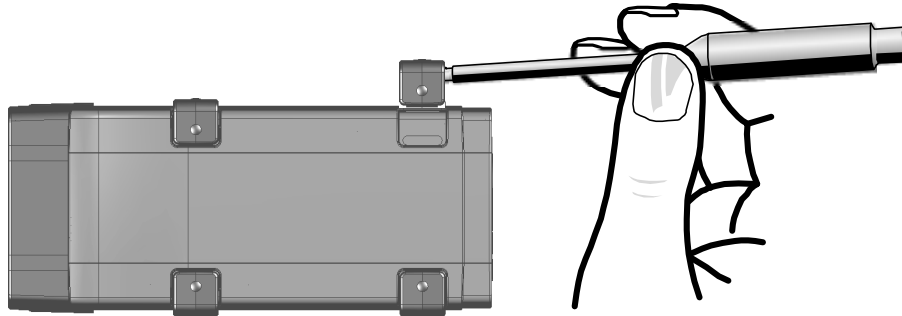
The modules are only admissible for assembly and operation on components or in locations which guarantee adherence to the technical data of the modules during operation (see chapter 8 on page 42).

#### 6.1.2 Fixing a Module onto a Carrier System

The ES593.1-D has a rugged metal housing with nonskid plastic feet. The unit can easily be screwed onto a carrier system for installation in a vehicle or in the lab. The screw thread for attaching your device is already contained in the housing and is easily accessible.

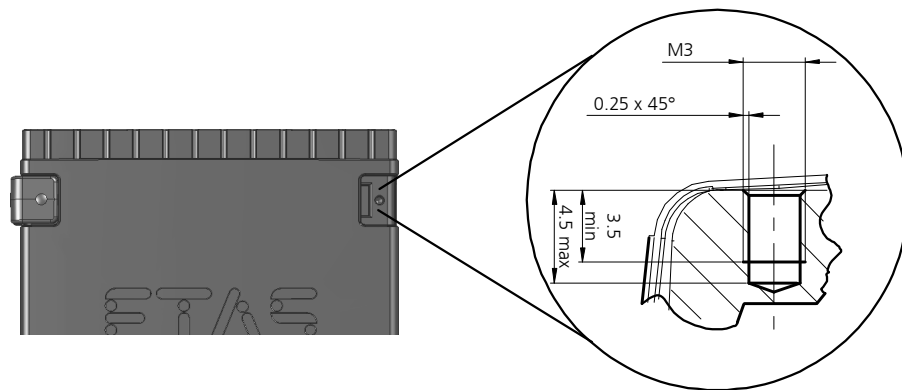
##### To fasten the ES593.1-D housing:

1. Remove the plastic feet from the bottom of the module by pushing a minus screwdriver between the housing bottom and the plastic foot.
2. Lifting off the plastic foot using the screwdriver as a lever.



**Fig. 6-1** Levering Off the Plastic Foot

3. A threaded hole will become visible under the plastic foot. The threads for fastening the module are located both on the bottom of the ES593.1-D housing.



**Fig. 6-2** Tapped blind hole



### CAUTION

**The electronic can be damaged or destroyed!**

Do not rework the threaded hole.



### NOTE

Use **excluding** M3 cylinder screws and fastening the module onto your carrier system with a max. torque of 0.8 Nm.

The max. length of engagement into the tapped blind hole of housing is 3 mm (see Fig. 6-2 on page 27).

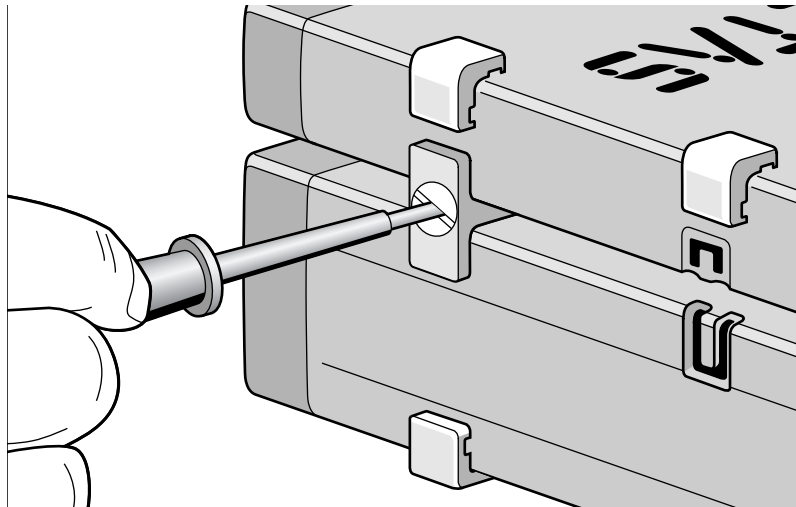
## 6.1.3 Connecting Several Modules Mechanically

As ETAS system housing was used, the ES593.1-D can also be connected to modules of the ETAS compact line (ES59x, ES6xx, ES910). These can be combined easily using the T-Brackets provided to form larger blocks.

You can attach a further module of the ETAS compact line under the ES593.1-D. Just remove the four plastic feet on each of the relevant device sides and attach the T-Brackets provided in their place.

### To connect modules mechanically:

1. Remove the four plastic feet from the bottom of the ES593.1-D so a further module can be attached.  
This makes the assembly slits for the T Brackets accessible.  
You can attach a further module under the ES593.1-D.
2. Remove the four plastic feet on the relevant side of the second module.
3. Turn the seals of the T-Brackets so they are at a right angle to the longitudinal axis of the brackets
4. Click two brackets into the assembly slits on one long side of the first module.
5. Click the second module into the two T-Brackets.



**Fig. 6-3** Connecting the ES593.1-D to Another Module

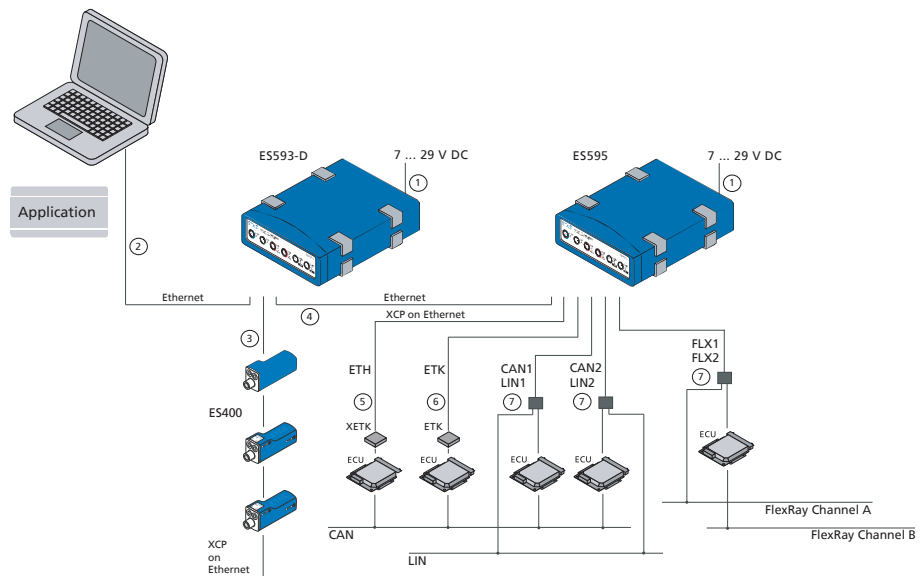
6. Quarter-turn the seals of the T-Brackets. This locks the connection of the two modules.
7. Click the other two T-Brackets into the assembly slits on the opposite long side of the device
8. Lock these brackets too.
9. If you would like to stack further modules, repeat this procedure with the next module.

## 6.2 Applications

For applications, the ES593.1-D has direct access to XETK ECUs and to ECUs and vehicle buses.

### **NOTE**

You can find a list of applications supported by the ES593.1-D in chapter 8.9.2 on page 46.



**Fig. 6-4** ES593.1-D and ES595.1 with ES400 modules, XETK, ETK and vehicle buses

| Cable in Fig. 6-4 | Function                                          | Short Name         |
|-------------------|---------------------------------------------------|--------------------|
| 1                 | Power supply cable                                | CBP120, CBP1205    |
| 2                 | Host connecting cable                             | CBE100             |
| 3                 | PC connecting and Power supply cable ES4xx, ES63x | CBEP420, CBEP425   |
| 4                 | Ethernet connecting cable                         | CBE130, CBE140     |
| 5                 | XETK connecting cable with XETK interface cable   | CBAE330 and CBE230 |
| 6                 | ETK connecting cable                              | CBM150             |
| 7                 | CAN/ LIN/ FlexRay connecting cable                | CBCF100            |

### 6.3 Wiring

The ports of the ES593.1-D may be wired in any order.

For order information on other cables which can be supplied separately, refer to the chapter "Cable and Accessories" on page 53.

**NOTE**

Be sure to check that the ports carry no voltage, before starting the cabling.

 **NOTE**

Make sure you carefully check the names of the cables used. Using the wrong cables can keep your ES593.1-D from functioning properly or damage the ES593.1-D and any devices connected to it.

### 6.3.1 “HOST” Port

 **DANGER**

**Dangerous electrical voltage!**

Connect the power cable only with a suitable vehicle battery or with a suitable lab power supply! The connection to power outlets is not allowed!

To prevent an inadvertent insertion in power outlets, ETAS recommends to equip the power cables with safety banana plugs CBP1205 in areas with power outlets.

To connect the ES593.1-D module with the PC (“HOST” port), you require the CBE100 cable provided.

**To connect the ES593.1-D with the PC**

1. Connect the **HOST** port of the ES593.1-D with the PC interface cable CBE100.
2. Connect the cable’s RJ-45 connector with the free Ethernet interface of your PC.

### 6.3.2 “7-29V” Port

To connect the ES593.1-D module with the power supply, you require the CBP120 cable or the CBP1205 cable provided.

**To connect the ES593.1-D with the power supply**

1. Connect the cable CBP120 or the cable CBP1205 for the power supply with the **7-29V** port of the ES593.1-D.
2. Connect the supply voltage pins of the cable with the required power supply.

Note the color coding of the connectors.

Note the current consumption of the ES593.1-D and its supply voltage range. The admissible values are listed in section 8.10.1 on page 47.

### 6.3.3 “ETH1” and “ETH2” Port

To connect the ES593.1-D module with other modules (“ETH1” and “ETH2” port), you require the CBE130 cable.

**Simple Module Network**

A simple module network consists of a single ES593.1-D module with connected network or measure modules. ES59x measure modules are used in the following example.

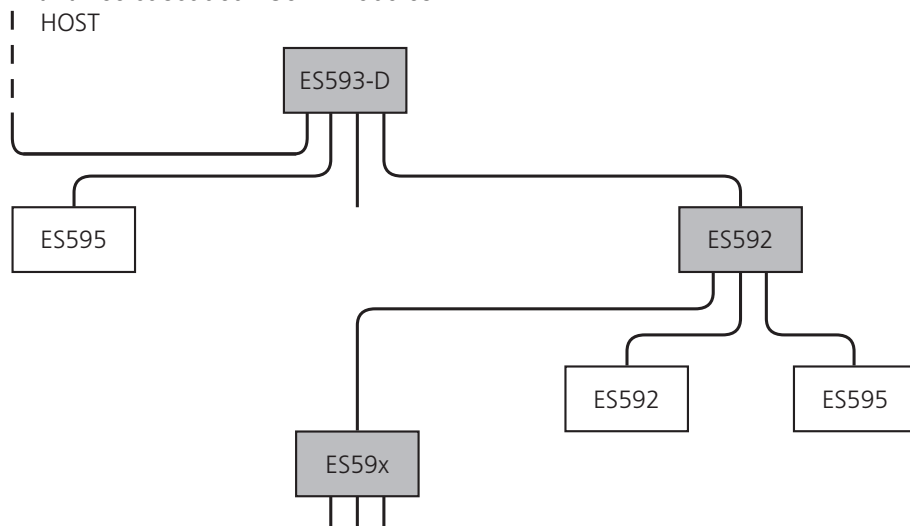
#### To connect an ES593.1-D with ES59x measure modules

1. Connect the **ETH1** port of the ES593.1-D with the Ethernet cable CBE130.
2. Connect the second cable connector with the **HOST** port of an ES59x measure module.
3. Connect further modules in accordance with this principle with the **ETH2** port of the ES593.1-D.

### Complex Module Network

A complex module network consists of several cascaded ES59x line modules with connected measure modules. ES59x measure modules are used in the following example.

With larger module networks, it is a good idea to make a sketch of the planned module network. The following figure shows an example of a module network with three cascaded ES59x modules.



**Fig. 6-5** Example of a Module Network

#### To connect an ES59x module with other ES59x modules

1. Connect the **HOST** port of the subordinate ES59x module with the **ETH1** port or with the **ETH2** port of the superordinate ES593.1-D module

or

1. connect the **HOST** port of the subordinate ES59x module with the **ETH1** port of the superordinate ES595.1 module

The superordinate ES59x module is nearer the host PC in the hierarchy.

2. Connect further ES59x modules in accordance with this principle with other **ETH** ports of the ES59x module.

## 6.4 Configuring the ES593.1-D

The ES593.1-D is configured at the PC via a graphic user interface. A web browser application is used as an interface.

### 6.4.1 Web Interface

The web interface of the ES593.1-D consists of a home page, a page for customized configuration of the interfaces for the "Wake Up" function and other pages with information on the status of the ES593.1-D.

### 6.4.2 Launching the ES593.1-D Web Interface

To launch the ES593.1-D web interface:

1. Connect the ES593.1-D to the PC.
2. Start the HSP program on the PC.
3. Click **Hardware Search**.
4. Highlight the ES593.1-D configured in the **Hardware** window.
5. Right-click **System Configuration**.

The default web browser launches the web interface for configuring the ES593.1-D with the current IP address of the module in the address field.

The home page of the ES593.1-D web interface is displayed.

### 6.4.3 Configuring the "Wake Up" Function

To configure the "Wake Up" function:

1. Click **Device Configuration**.
2. Click **Wake Up**.

The page for configuring the "Wake Up" function is displayed.

3. Configure the interfaces of the ES593.1-D for the **Wake Up** function.



## 7 Troubleshooting Problems

---

This chapter gives some information of what you can do when problems arise with the ES593.1-D and problems that are not specific to an individual software or hardware product.

### 7.1 Error LEDs

---

Please observe the LED which provides information on the functions of the interface and the ES593.1-D (see the chapter "LEDs" on page 16) to be able to judge the operational state of the ES593.1-D as well as troubleshooting measures.

### 7.2 Troubleshooting ES593.1-D Problems

---

The following table lists some of the possible problems with a remedy.

If you have any further questions, please contact our Customer Support (see chapter 11 on page 68).

| Problem                                                        | Diagnostic Questions                                    | Possible Solutions                                                                                                                    |
|----------------------------------------------------------------|---------------------------------------------------------|---------------------------------------------------------------------------------------------------------------------------------------|
| The ES593.1-D is not found with "Search for Hardware" in INCA. | Did you install the INCA version required?              | Check that the INCA software installed on your PC corresponds to the requirements listed in section 8.9.2 on page 46.                 |
|                                                                | Did you install the INCA ES5xx Add-On version required? | Check that the INCA ES5xx Add-On installed on your PC corresponds to the requirements listed in section 8.9.2 on page 46.             |
|                                                                | Did you configure the network card correctly?           | INCA, Config Tool and HSP operation:<br>Check that your network card has been configured in accordance with section 8.9.1 on page 45. |
|                                                                | Is the hardware on the PC connected?                    | Check that the connection is undamaged.                                                                                               |
| The ETK interface is not initialized.                          | Have you installed the ETK Drivers and Tools?           | Check that ETK Drivers and Tools installed on your PC corresponds to the requirements listed in section 8.9.2 on page 46.             |
|                                                                | Which ETK is connected?                                 | Check whether the connected ETK is supported (see chapter 8.10.4 on page 49).                                                         |

| Problem                               | Diagnostic Questions                                                  | Possible Solutions                                                                                                                                                                                     |
|---------------------------------------|-----------------------------------------------------------------------|--------------------------------------------------------------------------------------------------------------------------------------------------------------------------------------------------------|
| The LIN interface is not initialized. | Have you installed the INCA-LIN Add-On?                               | Check that the INCA-LIN Add-On installed on your PC corresponds to the requirements listed in section 8.9.2 on page 46.                                                                                |
| Measurement does not start.           | Are you being prompted to carry out an update in the INCA-Monitorlog? | Update the modules.                                                                                                                                                                                    |
|                                       | Is there no data from the module?                                     | Check that your power supply and test setup correspond to the requirements.                                                                                                                            |
|                                       |                                                                       | Check that the wiring of the hardware to the PC is correct/intact.                                                                                                                                     |
| Data is lost during data transfer.    | Are you using WLAN in your test setup?                                | WLAN is not permissible within this ETAS network. Wire your test setup (ETAS modules and their connection to the PC) with ETAS cables only.                                                            |
|                                       | Are you using the correct type of network card in your laptop?        | Check whether you are using a PCMCIA network card in your laptop. PCMCIA cards with an 8- or 16-bit data bus are not suitable. Only use PCMCIA cards with a 32-bit data bus, mini-PCI or ExpressCards. |

## 7.3 Problems and Solutions

This chapter contains information on general problems and their solutions for those using the ES400 modules with INCA or with the ES4xx Configuration Tool.

### 7.3.1 Network Adapter cannot be selected via Network Manager

#### Cause: APIPA is disabled

The alternative mechanism for IP addressing (APIPA) is usually enabled on all Windows XP and Vista systems. Network security policies, however, may request the APIPA mechanism to be disabled. In this case, you cannot use a network adapter which is configured for DHCP to access ETAS hardware. The ETAS Network Manager displays a warning message.

The APIPA mechanism can be enabled by editing the Windows registry. This is permitted only to users who have administrator privileges. It should be done only in coordination with your network administrator.

**To enable the APIPA mechanism:**

1. Open the Registry Editor:
  - i. Windows XP:
    - 1.1 Click **Start**.
    - 1.2 Click **Run**.
    - 1.3 Enter `regedit`.
    - 1.4 Click **OK**.
  - ii. Windows Vista:
    - 1.1 Click **Start**.
    - 1.2 Enter `regedit` in the entry field.
    - 1.3 Push <ENTER>.

The registry editor is displayed.

2. Open the folder `HKEY_LOCAL_MACHINE\SYSTEM\CurrentControlSet\Services\Tcpip\Parameters\`
3. Click **Edit** → **Find** to search for the key `IPAutoconfigurationEnabled`.

If you cannot find any instances of the registry key mentioned, the APIPA mechanism has not been disabled on your system, i.e. there is no need to enable it. Otherwise proceed with the following steps.

4. Set the value of the key `IPAutoconfigurationEnabled` to 1 to enable the APIPA mechanism.

You may find several instances of this key in the Windows registry which either apply to the TCP/IP service in general or to a specific network adapter. You only need to change the value for the corresponding network adapter.
5. Close the registry editor.
6. Restart your workstation in order to make your changes take effect.

### 7.3.2 Search for Ethernet Hardware Fails

**Cause: Personal Firewall blocks Communication**

For a detailed description on problems caused by personal firewalls and possible solutions see "Personal Firewall Blocks Communication" on page 37.

**Cause: Client Software for Remote Access blocks Communication**

PCs or notebooks which are used outside the ETAS hardware network sometimes use a client software for remote access which might block communication to the ETAS hardware. This can have the following causes:

- A firewall which is blocking Ethernet messages is being used (see „Cause: Personal Firewall blocks Communication“ on page35)
- By mistake, the VPN client software used for tunneling filters messages. As an example, Cisco VPN clients with versions before V4.0.x in some cases erroneously filtered certain UDP broadcasts.

If this might be the case, please update the software of your VPN client.

### **Cause: ETAS Hardware hangs**

Occasionally the ETAS hardware might hang. In this case switch the hardware off, then switch it on again to re-initialize it.

### **Cause: Network Adapter temporarily has no IP Address**

Whenever you switch from a DHCP company LAN to the ETAS hardware network, it takes at least 60 seconds until ETAS hardware can be found. This is caused by the operating system's switching from the DHCP protocol to APIPA, which is being used by the ETAS hardware.

### **Cause: ETAS Hardware had been connected to another Logical Network**

If you use more than one PC or notebook for accessing the same ETAS hardware, the network adapters used must be configured to use the same logical network. If this is not possible, it is necessary to switch the ETAS hardware off and on again between different sessions (repowering).

### **Cause: Device driver for network card not in operation**

It is possible that the device driver of a network card is not running. In this case you will have to deactivate and then reactivate the network card.

#### **To deactivate and reactivate the network card:**

1. To deactivate the network card first select in the Windows start menu the following item:
  - i. Windows XP:  
**Control Panel → Network Connections**
  - ii. Windows Vista:  
**Control Panel → Network and Internet → Network and Sharing Center → Manage Network Connections**
2. Right click on the used network adapter.
3. Select **Disable** in the context menu.
4. In order to reactivate the network adapter right click on it again.
5. Select **Enable**.

### **Cause: Laptop power management deactivates the network card**

The power management of a laptop computer can deactivate the network card. Therefore you should turn off power monitoring on the laptop.

**To switch off power monitoring on the laptop:**

1. From the Windows Start Menu, select
  - i. Windows XP:  
**Control Panel** → **System**.  
 Then select the **Hardware** tab.  
 Click on **Device Manager**.
  - ii. Windows Vista:  
**Control Panel** → **System and Maintenance** → **Device Manager**.
2. In the Device Manager open the tree structure of the entry **Network Adapters**.
3. Right click on the used network adapter.
4. Select **Properties** in the context menu.
5. Select the **Power Management** tab.
6. Deactivate the **Allow the computer to turn off this device to save power** option.
7. Select the **Advanced** tab.
8. If the property **Autosense** is included, deactivate it.
9. Click **OK** to apply the settings.

**Cause: Automatic disruption of network connection**

It is possible after a certain period of time without data traffic that the network card automatically interrupts the Ethernet connection. This can be prevented by setting the registry key `autodisconnect`.

**To set the registry key `autodisconnect`:**

1. Open the Registry Editor.
2. Select under `HKEY_LOCAL_MACHINE\SYSTEM\ControlSet001\Services\lanmanserver\parameters` the Registry Key `autodisconnect` and change its value to `0xffffffff`.

**7.3.3 Personal Firewall Blocks Communication****Cause: Permissions given through the firewall block ETAS hardware**

Personal firewalls may interfere with access to ETAS Ethernet hardware. The automatic search for hardware typically cannot find any Ethernet hardware at all, although the configuration parameters are correct.

Certain actions in ETAS products may lead to some trouble if the firewall is not properly parameterized, e.g. upon opening an experiment in ASCET or searching for hardware from within INCA or HSP.

If a firewall is blocking communication to ETAS hardware, you must either disable the firewall software while working with ETAS software, or the firewall must be configured to give the following permissions:

- Outgoing limited IP broadcasts via UDP (destination address 255.255.255.255) for destination port 18001
- Incoming limited IP broadcasts via UDP (destination IP 255.255.255.255, originating from source IP 0.0.0.0) for destination port 18001
- Directed IP broadcasts via UDP to the network configured for the ETAS application, destination port 18001
- Outgoing IP unicasts via UDP to any IP in network configured for the ETAS application, destination ports 69, 18001, 18017 or 49152 to 50175
- Incoming IP unicasts via UDP originating from any IP in the network configured for the ETAS application, source ports 69, 18001, 18017 or 49152 to 50175

### NOTE

The ports that have to be used in concrete use cases depend on the hardware used. For more precise information on the port numbers that can be used please refer to your hardware documentation.

Windows XP and Vista come with a built-in personal firewall. On many other systems it is very common to have personal firewall software from third party vendors, such as Symantec, McAfee or BlackIce installed. The proceedings in configuring the ports might differ for each personal firewall software used. Therefore please refer to the user documentation of your personal firewall software for further details.

As an example for a firewall configuration, you will find below a description on how to configure the widely used Windows XP firewall if the hardware access is prohibited under Windows XP with Service Pack 2.

## Solution for Windows XP Firewall, Users with Administrator Privileges

If you have administrator privileges on your PC, the following dialog window opens if the firewall blocks an ETAS product.



**To unblock a product:**

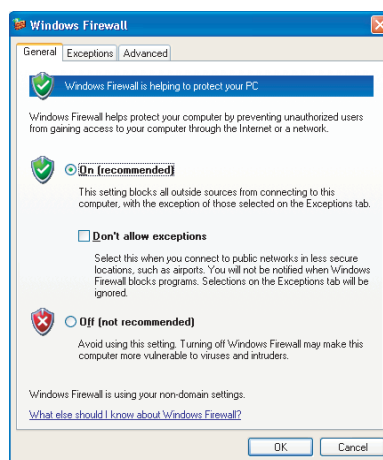
1. In the **Windows Security Alert** dialog window, click on **Unblock**.

The firewall no longer blocks the ETAS product in question (in the example: ASCET). This decision survives a restart of the program, or even the PC.

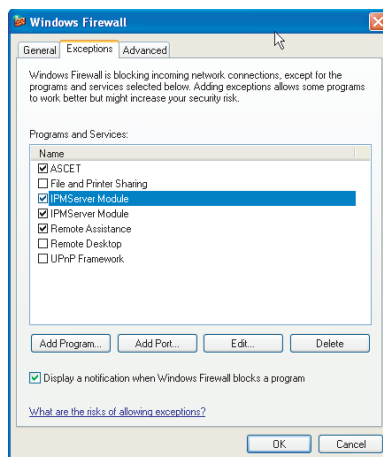
Instead of waiting for the "Windows Security Alert" dialog window, you can unblock ETAS products in advance.

**To unblock ETAS products in the firewall control:**

1. From the Windows Start Menu, select Settings ∅ Control Panel.
2. In the control panel, double-click the **Windows Firewall** icon.



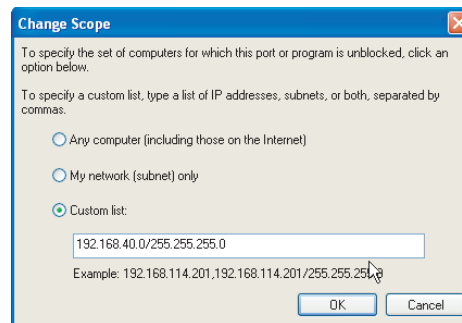
3. In the **Windows Firewall** dialog window, open the **Exceptions** tab.



This tab lists the exceptions not blocked by the firewall. Use **Add Program** or **Edit** to add new programs, or edit existing ones.

4. Make sure that the ETAS products and services you want to use are properly configured exceptions.

- i. Open the **Change Setup** window.



- ii. To ensure proper ETAS hardware access, make sure that at least the IP addresses 192 . 168 . 40 . xxx are unblocked.
  - iii. Close the **Change Setup** window with **OK**.
5. Close the **Windows Firewall** dialog window with **OK**.

The firewall no longer blocks the ETAS product in question.  
This decision survives a restart of the PC.

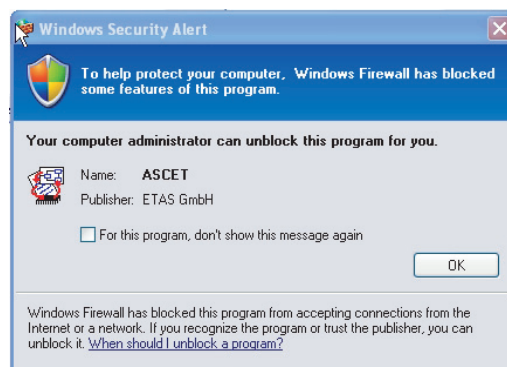
## Solution for Windows XP Firewall, Users without Administrator Privileges

This section addresses users with restricted privileges, e.g., no system changes, write restrictions, local login.

Working with an ETAS software product requires "Write" and "Modify" privileges within the `ETAS`, `ETASData`, and ETAS temporary directories. Otherwise, an error message opens if the product is started, and a database is opened. In that case, no correct operation of the ETAS product is possible because the database file and some `*.ini` files are modified during operation.

The ETAS software has to be installed by an administrator anyway. It is recommended that the administrator assures that the ETAS program/processes are added to the list of the Windows XP firewall exceptions, and selected in that list, after the installation. If this is omitted, the following will happen:

- The "Window Security Alert" window opens when one of the actions conflicting with a restrictive firewall configuration is executed.





To unblock a program (no Admin privileges):

1. In the **Windows Security Alert** dialog window, activate the option **For this program, don't show this message again**.
2. Click **OK** to close the window.

An administrator has to select the respective ETAS software in the **Exceptions** tab of the **Windows Firewall** dialog window to avoid further problems regarding hardware access with that ETAS product.

## 8 Technical Data

---

This chapter contains information on the following topics:


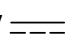





- "General Data" on page 42
- "RoHS Conformity" on page 44
- "CE conformity" on page 44
- "Taking the Product Back and Recycling" on page 44
- "Declarable Substances" on page 45
- "Use of Open Source Software" on page 45
- "System Requirements" on page 45
- "Electrical Data" on page 47
- "Pin Assignment" on page 50

### 8.1 General Data

---

#### 8.1.1 Product Labeling

The following symbols are used for product labeling:

| Symbol                                                                                    | Description                                                       |
|-------------------------------------------------------------------------------------------|-------------------------------------------------------------------|
|        | Prior to operating the product, be sure to read the user's guide! |
| SN: 1234567                                                                               | Serial number (seven-digit)                                       |
| Vx.y.z                                                                                    | Hardware version of the product                                   |
| F 00K 123 456                                                                             | Ordering number of the product, see chapter 10.1 on page 64       |
| 7-29V  | Operating voltage range (DC)                                      |
| xy A                                                                                      | Current consumption, max.                                         |
|        | Marking for CE conformity (Chapter 8.3 on page 44)                |
|        | Marking for UKCA conformity (Chapter 8.4 on page 44)              |
|        | Marking for KCC conformity (Chapter 8.5 on page 44)               |
|        | Labeling for WEEE, see chapter 8.6 on page 44                     |
|        | Labeling for RoHS (China), see chapter on page 44                 |

### 8.1.2 Fulfilled Standards and Norms

The module adheres to the following standards and norms:

| Norm           | Test                                                                                |
|----------------|-------------------------------------------------------------------------------------|
| EN 61326-1     | Electrical equipment for measurement, control and laboratory use - EMC requirements |
| EN 61000-6-2   | Immunity for industrial environments                                                |
| EN 61000-6-3   | Emission standard (residential, commercial and light-industrial environments)       |
| EN 60 529      | Degrees of protection provided by enclosures (IP code)                              |
| EN 60 068-2-32 | Basic environmental testing procedures; part 2: tests; test Ed: free fall           |

### 8.1.3 Environmental Conditions

|                                                           |                       |
|-----------------------------------------------------------|-----------------------|
| Temperature range (operation)                             | -40 °C bis +70 °C     |
|                                                           | -40 °F bis +158 °F    |
| Temperature range (storage)<br>(module without packaging) | -40 °C bis +85 °C     |
|                                                           | -40 °F bis +185 °F    |
| Relative humidity (non-condensing)                        | 0 to 85% (operation)  |
|                                                           | 0 to 95% (storage)    |
| Implementation altitude                                   | max. 5000 m/ 16400 ft |
| Protection class                                          | IP30                  |
| Degree of pollution                                       | 2                     |



#### NOTE

The module is suited for use in interiors, in the passenger compartment or in the luggage compartment of vehicles. The module is **not** suited for installation in the engine compartment and similar environments.

### 8.1.4 Maintenance the Product

Do not open or change the module! Works on the module housing may be executed only by qualified technical personnel. Send defect modules to ETAS.

### 8.1.5 Cleaning the Product

We recommend to clean the product with a dry cloth.

### 8.1.6 Mechanical Data

|                        |                           |
|------------------------|---------------------------|
| Dimensions (H x W x D) | 45 mm x 127 mm x 160 mm   |
|                        | 1.75 in x 5.0 in x 6.3 in |
| Weight                 | Approx. 0.8 kg/ 1.8 lbs   |

## 8.2 **RoHS Conformity**

---

### **European Union**

The EU Directive 2002/95/EU limits the use of certain dangerous materials for electrical and electronic devices (RoHS conformity).

ETAS confirms that the product corresponds to this directive which is applicable in the European Union.

### **China**

ETAS confirms that the product meets the product-specific applicable guidelines of the China RoHS (Management Methods for Controlling Pollution Caused by Electronic Information Products Regulation) applicable in China with the China RoHS marking affixed to the product or its packaging.

## 8.3 **CE conformity**

---

With the CE mark attached to the product or its packaging, ETAS confirms that the product corresponds to the product-specific, applicable directives of the European Union.

The CE Declaration of Conformity for the product is available upon request.

## 8.4 **UKCA conformity**

---

With the UKCA mark attached to the product or its packaging, ETAS confirms that the product corresponds to the product-specific, applicable standards and directives of Great Britain.

The UKCA declaration of conformity for the product is available on request.

## 8.5 **KCC conformity**

---

With the KC mark attached to the product and its packaging, ETAS confirms that the product has been registered in accordance with the product-specific KCC guidelines of the Republic of Korea.

## 8.6 **Taking the Product Back and Recycling**

---

The European Union has passed a directive called Waste Electrical and Electronic Equipment, or WEEE for short, to ensure that systems are setup throughout the EU for the collection, treating and recycling of electronic waste.

This ensures that the devices are recycled in a resource-saving way representing no danger to health or the environment.



**Fig. 8-1** WEEE Symbol

The WEEE symbol (see Fig. 8-1 on page 44) on the product or its packaging shows that the product must not be disposed of as residual garbage.

The user is obliged to collect the old devices separately and return them to the WEEE take-back system for recycling.

The WEEE directive concerns all ETAS devices but not external cables or batteries.

For more information on the ETAS GmbH Recycling Program, contact the ETAS sales and service locations (see chapter 8 on page 42).

## 8.7 **Declarable Substances**

---

### **European Union**

Some products from ETAS GmbH (e.g. modules, boards, cables) use components with substances that are subject to declaration in accordance with the REACH regulation (EU) no.1907/2006.

Detailed information is located in the ETAS download center in the customer information "REACH Declaration" ([www.etas.com/Reach](http://www.etas.com/Reach)). This information is continuously being updated.

## 8.8 **Use of Open Source Software**

---

The product uses Open Source Software (OSS). This software is installed in the product at the time of delivery and does not have to be installed or updated by the user. Reference shall be made to the use of the software in order to fulfill OSS licensing terms. Additional information is available in the document "OSS Attributions List" at the ETAS website [www.etas.com](http://www.etas.com).

## 8.9 **System Requirements**

---

### 8.9.1 **Hardware**

Operation of the ES593.1-D requires a power supply voltage of 7 V to 29 V DC.

#### **PC with one Ethernet interface**

A PC with one open Ethernet interface (100 Mbit/s, full duplex) with RJ-45 connection is required. Ethernet interfaces that are implemented with an additional network card in the PC must feature a 32-bit data bus.

## Requirement to ensure successful initialization of the module

### NOTE

It is imperative you disable the function which automatically switches to power-saving mode on your PC network adapter when there is no data traffic on the Ethernet interface!

### To deactivate the power saving mode

Choose in System Control Center / Device Manager / Network Adapter the used network adapter by double-click. Deactivate the "Allow the computer to turn off this device to save power" option in the "Power Management" register. Confirm your configuration.

The manufacturers of network adapter have different names for this function.

Example:

- "Link down Power saving"
- "Allow the computer to turn off this device to save power"

## 8.9.2 Supported Applications and Software Requirements

To configure the ES593.1-D and for control and data acquisition, you need software in the following versions:

| Interface | Application                     | Classification <sup>1)</sup> | Support in Application Software |                         |
|-----------|---------------------------------|------------------------------|---------------------------------|-------------------------|
|           |                                 |                              | INCA V6.2.1 <sup>2)</sup>       | INCA V7.0 <sup>3)</sup> |
| ETH       | XCP on Ethernet                 | MC                           | yes                             | yes                     |
| ETK       | ETK Measurement and Calibration | MC                           | yes <sup>4)</sup>               | yes <sup>5)</sup>       |
| CAN       | CAN Monitoring                  | MC                           | yes                             | yes                     |
|           | CAN Output                      | MC                           | yes                             | yes                     |
|           | CCP                             | MC                           | yes                             | yes                     |
|           | KWP on CAN                      | MC                           | yes                             | yes                     |
|           | UDS                             | MC                           | yes                             | yes                     |
|           | XCP on CAN                      | MC                           | yes                             | yes                     |
|           | Pre-Buffering                   | MC                           | no                              | yes <sup>6)</sup>       |
|           | Wake-Up                         | MC                           | no                              | yes <sup>6)</sup>       |

<sup>1)</sup>: MC: Measurement and Calibration

<sup>2)</sup>: INCA V6.2.1 with Hotfix 13 and higher and additionally INCA-ES5xx Add-On V6.2.2 and higher

<sup>3)</sup>: additionally INCA-ES5xx Add-On V7.0.0 and higher

<sup>3)</sup>: additionally ETK Drivers and Tools V2.1.6 and higher

<sup>3)</sup>: additionally ETK Drivers and Tools V3.0.0 and higher

<sup>3)</sup>: only for interfaces CAN1 and CAN2

## 8.10 Electrical Data

### 8.10.1 Power Supply

|                                              |                                                                                    |
|----------------------------------------------|------------------------------------------------------------------------------------|
| Operating voltage                            | 7 V to 29 V DC                                                                     |
| Power consumption, normal mode <sup>1)</sup> | Typ. 500 mA at 14,4 V DC                                                           |
| Power consumption, standby <sup>1)</sup>     | Typ. 20 mA at 14,4 V DC                                                            |
| Current consumption, total                   | Max. 7 A<br>(module: max. 3 A, output current per connection "ETH": nom. max. 2 A) |
| Energy management                            | On/ off at start/ stop of the Ethernet communication (on/ off upstream module)     |
| Protection <sup>2)</sup>                     | Protected against polarity inversion and Load Dump protection                      |

<sup>1)</sup>: module without power supply of connected modules

<sup>2)</sup>: The module may be used only with central load dump protection.

### 8.10.2 Host Interface (HOST)

|                             |                                                                       |
|-----------------------------|-----------------------------------------------------------------------|
| Anschlusstyp                | Upstream                                                              |
| Anzahl                      | 1 (HOST)                                                              |
| Verbindung                  | 10/100Base-T Ethernet                                                 |
| Protocol                    | TCP/IP                                                                |
| Protocol                    | Ethernet Switching (Layer 2), IEEE802.3                               |
| Resolution synchronization  | 1 $\mu$ s                                                             |
| Compatibility <sup>1)</sup> | PC                                                                    |
|                             | ES720 Drive Recorder                                                  |
|                             | Network and interface modules:<br>ES51x, ES592, ES593-D, ES595, ES600 |

<sup>1)</sup>: Support of the ETAS synchronization mechanism



#### NOTE

To ensure successful initialization of the network card of your PC, refer to chapter "Hardware" on page 45.

### 8.10.3 Ethernet Interfaces (ETH1 and ETH2)

|                                               |                                                                |
|-----------------------------------------------|----------------------------------------------------------------|
| Type of connection                            | Downstream                                                     |
| Number                                        | 2 (ETH1, ETH2)                                                 |
| Connection                                    | 10/100Base-T Ethernet                                          |
| Protocol                                      | TCP/IP                                                         |
| Resolution synchronization                    | 1 $\mu$ s                                                      |
| Nom. max. output current per connection "ETH" | Min. 2 A                                                       |
| Power supply of connected modules             | ES4xx Measurement Modules,<br>ES6xx Measurement Modules, XETKs |
| Compatibility <sup>1)</sup>                   | Network Module:<br>ES600                                       |
|                                               | Network and interface modules:<br>ES51x, ES592, ES593-D, ES595 |
|                                               | Measurement modules:<br>ES4xx, ES6xx, ES930.1                  |
|                                               | Prototyping and Interface Module:<br>ES910.3                   |
|                                               | ECUs with XETK,<br>ECUs with Ethernet interface                |
|                                               | Third party Ethernet devices <sup>2)</sup>                     |

1): Support of ETAS synchronization mechanism

2): No support of ETAS synchronization mechanism



### 8.10.4 ETK Interface (ETK)

|                       |                                |
|-----------------------|--------------------------------|
| Operating modes       | Basic, Compatibility, Advanced |
| ETK protocol speed    | 8 Mbit/s / 100 Mbit/s          |
| ETK protocol transfer | Single Mode / Block Mode       |



#### NOTE

The ES593.1-D supports all current ETK types.  
 Exception:  
 The ETK types not supported by the module are listed in the table. For more details, refer to the ETAS website.

|                    |                                                                                                                       |
|--------------------|-----------------------------------------------------------------------------------------------------------------------|
| ETKs not supported | ETKM<br>ETK3.x<br>ETK4<br>ETK6.x<br>ETK7.0<br>METK1<br>METK2<br>ETK8.0<br>ETK8.1<br>ETKS1.0-A<br>ETKS1.0-B<br>ETKP1.0 |
|--------------------|-----------------------------------------------------------------------------------------------------------------------|

### 8.10.5 CAN Interfaces (CAN1/CAN3 and CAN2/CAN4)

#### 8.10.5.1 CAN Interfaces (CAN1/CAN3 and CAN2/CAN4)

|                                   |                                                                                                                                                       |
|-----------------------------------|-------------------------------------------------------------------------------------------------------------------------------------------------------|
| CAN1, CAN2, CAN3 and CAN4         | 4 independent interfaces, galvanically isolated from each other and from the other interfaces, every channel separately configurable (High-Speed CAN) |
| Protocols                         | CAN V2.0a (Standard Identifier),<br>CAN V2.0b (Extended Identifier)                                                                                   |
| Transceiver (Physical Layer)      | TJA1040                                                                                                                                               |
| Transfer speed                    | Max. 1 MBaud with a bus length of 20 m                                                                                                                |
| Differential internal resistor Ri | 10 kOhm                                                                                                                                               |

#### 8.10.5.2 CAN Interfaces with "CAN Pre-Buffering" Function (CAN1/CAN2)

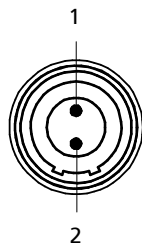
|                   |                                         |
|-------------------|-----------------------------------------|
| CAN Pre-Buffering | Boot time to start of recording: 100 ms |
| Wake-Up           | System Wake-Up (CAN activity)           |

## 8.11 Pin Assignment

**i NOTE**

All connectors are shown with a view of the interfaces of the ES593.1-D. All shields are at case potential.

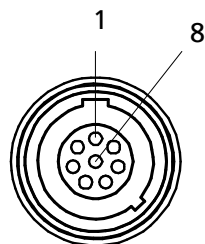
### 8.11.1 Power Supply Interface (7-29V)



**Fig. 8-2** Power Supply Interface (7-29V)

| Pin | Signal | Meaning              |
|-----|--------|----------------------|
| 1   | UBATT+ | Supply voltage, plus |
| 2   | Ground | Ground               |

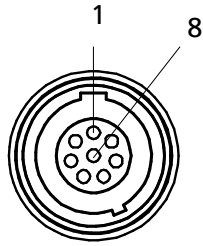
### 8.11.2 Host Interface (HOST)



**Fig. 8-3** Host Interface (HOST)

| Pin | Signal | Meaning               |
|-----|--------|-----------------------|
| 1   | -      | Reserved              |
| 2   | -      | Reserved              |
| 3   | -      | Reserved              |
| 4   | RX+    | Received data, plus   |
| 5   | TX-    | Send data, minus      |
| 6   | RX-    | Received data,, minus |
| 7   | -      | Reserved              |
| 8   | TX+    | Send data, plus       |

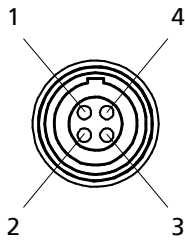
### 8.11.3 Ethernet Interfaces (ETH1 and ETH2)



**Fig. 8-4** Ethernet Interfaces (ETH1 and ETH2)

| Pin | Signal | Meaning               |
|-----|--------|-----------------------|
| 1   | UBATT+ | Supply voltage, plus  |
| 2   | UBATT+ | Supply voltage, plus  |
| 3   | UBATT- | Supply voltage, minus |
| 4   | RX+    | Receive data, plus    |
| 5   | TX-    | Send data, minus      |
| 6   | RX-    | Receive data, minus   |
| 7   | UBATT- | Supply voltage, minus |
| 8   | TX+    | Send data, plus       |

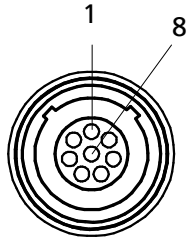
### 8.11.4 ETK Interface (ETK)



**Fig. 8-5** ETK Interface (ETK)

| Pin | Signal | Meaning              |
|-----|--------|----------------------|
| 1   | TX+    | Send data, plus      |
| 2   | TX-    | Send data, minus     |
| 3   | RX+    | Received data, plus  |
| 4   | RX-    | Received data, minus |

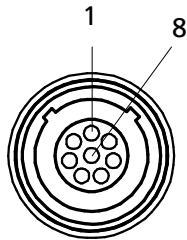
### 8.11.5 CAN Interface (CAN1/CAN3)



**Fig. 8-6** CAN Interface (CAN1 and CAN3)

| Pin | Signal     | Meaning  |
|-----|------------|----------|
| 1   | -          | Reserved |
| 2   | CAN1_LOW   |          |
| 3   | CAN1_GND_1 |          |
| 4   | CAN3_HIGH  |          |
| 5   | CAN3_GND   |          |
| 6   | CAN1_GND_2 |          |
| 7   | CAN1_HIGH  |          |
| 8   | CAN3_LOW   |          |

### 8.11.6 CAN Interface (CAN2/CAN4)



**Fig. 8-7** CAN Interface (CAN2 and CAN4)

| Pin | Signal     | Meaning  |
|-----|------------|----------|
| 1   | -          | Reserved |
| 2   | CAN2_LOW   |          |
| 3   | CAN2_GND_1 |          |
| 4   | CAN4_HIGH  |          |
| 5   | CAN4_GND   |          |
| 6   | CAN2_GND_2 |          |
| 7   | CAN2_HIGH  |          |
| 8   | CAN4_LOW   |          |

## 9 Cable and Accessories

---

The "Cables and Accessories" chapter contains an overview of the available cables and accessories.

### NOTE

---

Only use the ETAS cables named in this User's Guide at the interfaces of the ES593.1-D. The maximum admissible cable lengths must be adhered to.

### NOTE

---

Custom cables can be produced according to your specifications. For more information on custom cables, please contact your local ETAS sales representative.

### 9.1 Cable for the "7-29 V DC" Connection

---

### DANGER

---

#### **Dangerous electrical voltage!**

Connect the power cable only with a suitable vehicle battery or with a suitable lab power supply! The connection to power outlets is not allowed!

To prevent an inadvertent insertion in power outlets, ETAS recommends to equip the power cables with safety banana plugs CBP1205 in areas with power outlets.

Power supply cables suitable for the ES593.1-D module can be delivered in two designs:

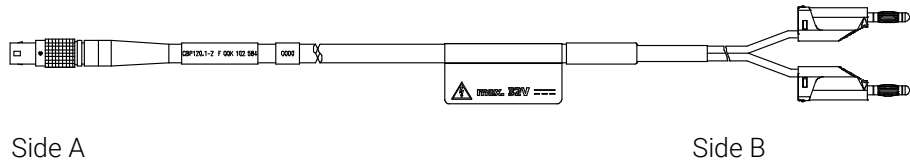
- power supply cable CBP120 with standard banana plugs (current design)
- power supply cable CBP1205 with safety banana plugs (new design)

### NOTE

---

Application, permissible voltages and all the other technical data of the power supply cables are identical for both designs.

### 9.1.1 CBP120 Cable



**Fig. 9-1** Cable CBP120-2 (power supply cable with standard banana plugs)

| Side A                                                |        | Side B     |               |
|-------------------------------------------------------|--------|------------|---------------|
|                                                       |        |            |               |
| Pin                                                   | Signal | Plug       | Signal        |
| 1                                                     | UBATT- | Red        | UBATT-        |
| 2                                                     | Ground | Black      | Ground        |
| Order name                                            |        | Short name | Order number  |
| Power Supply Cable, Lemo 1B FGJ Banana (2fc-2mc), 2 m |        | CBP120-2   | F 00K 102 584 |

### 9.1.2 CBP1205 Cable

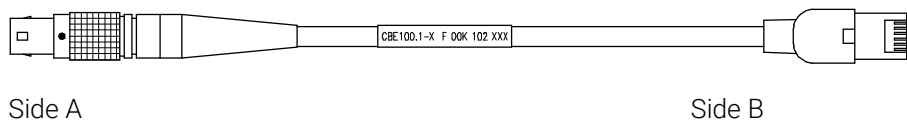


**Fig. 9-2** Cable CBP1205 (power supply cable with safety banana plugs)

| Side A                                                         |        | Side B     |               |
|----------------------------------------------------------------|--------|------------|---------------|
|                                                                |        |            |               |
| Pin                                                            | Signal | Plug       | Signal        |
| 1                                                              | UBATT  | Red        | UBATT         |
| 2                                                              | Ground | Black      | Ground        |
| Order Name                                                     |        | Short name | Order Number  |
| Power Supply Cable, Lemo 1B FGJ – Safety Banana (2fc-2mc), 2 m |        | CBP1205-2  | F 00K 110 023 |

**NOTE**  
 Power supply cables with safety banana plug are suitable only for connection to voltage sources with safety socket.

### 9.2 HOST Interface Cable



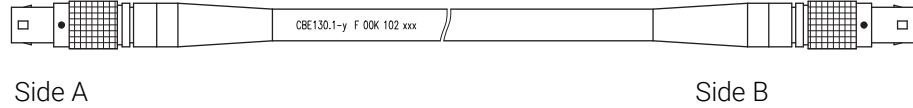
**Fig. 9-3** CBE100-x Cable

| Order Name                                                      | Short name | Order Number  |
|-----------------------------------------------------------------|------------|---------------|
| Ethernet PC Connection Cable, Lemo 1B FGG - RJ45 (8mc-8mc), 3 m | CBE100-3   | F 00K 102 559 |
| Ethernet PC Connection Cable, Lemo 1B FGG - RJ45 (8mc-8mc), 8 m | CBE100-8   | F 00K 102 571 |

## 9.3 ETH1 und ETH2 Interface Cable

### 9.3.1 Ethernet Connection and Power Supply Cable

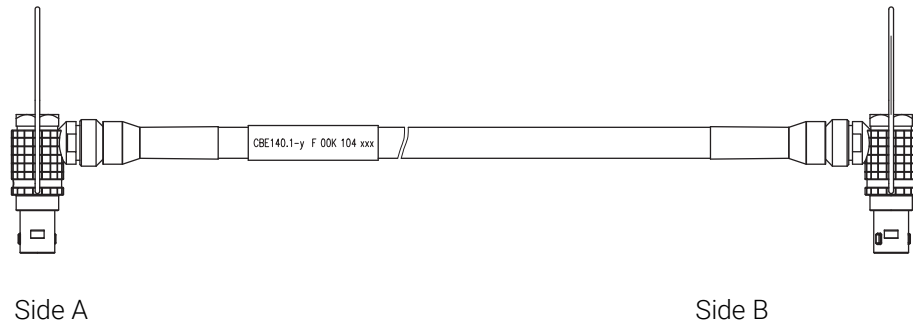
#### CBE130-x Cable



**Fig. 9-4** CBE130-x Cable

| Order Name                                                                          | Short name  | Order Number  |
|-------------------------------------------------------------------------------------|-------------|---------------|
| Ethernet Connection and Power Supply Cable, Lemo 1B FGF Lemo 1B FGD (8mc-8mc), 0m45 | CBE130-0m45 | F 00K 102 748 |
| Ethernet Connection and Power Supply Cable, Lemo 1B FGF Lemo 1B FGD (8mc-8mc), 3 m  | CBE130-3    | F 00K 102 587 |

#### CBE140 Cable

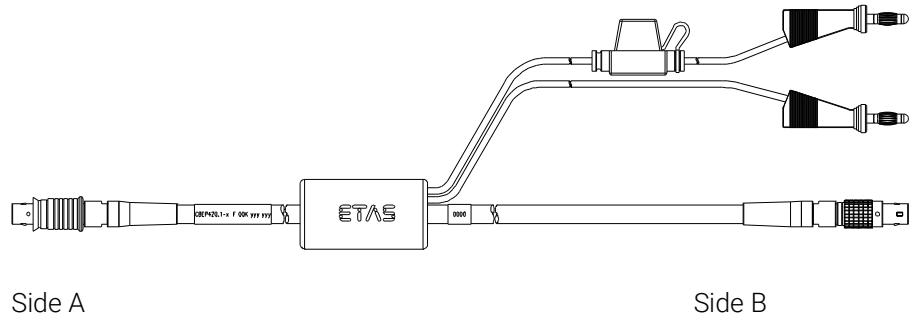


**Fig. 9-5** CBE140-0m45 Cable

| Order Name                                                                                                  | Short name  | Order Number  |
|-------------------------------------------------------------------------------------------------------------|-------------|---------------|
| Ethernet Connection and Power Supply Cable with Angular Connectors, Lemo 1B FMF Lemo 1B FMD (8mc-8mc), 0m45 | CBE140-0m45 | F 00K 104 153 |



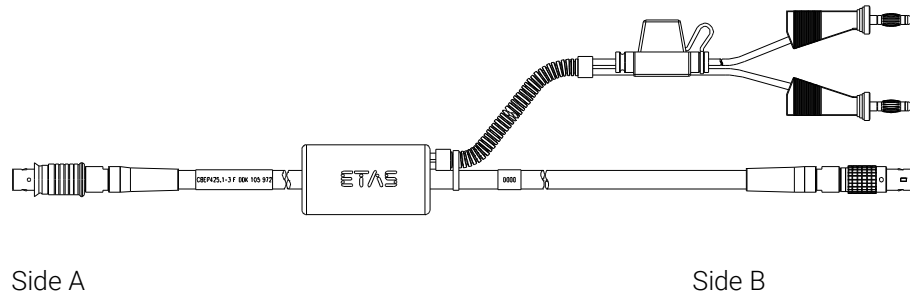
### CBEP420.1 Cable



**Fig. 9-6** CBEP420.1 Cable

| Order Name                                                                                    | Short name  | Order Number  |
|-----------------------------------------------------------------------------------------------|-------------|---------------|
| Ethernet Connection and Power Supply Cable, Lemo 1B FGF Lemo 1B FGL Banana (8mc-8fc+2mc), 3 m | CBEP420.1-3 | F 00K 105 292 |

### CBEP425.1 Cable



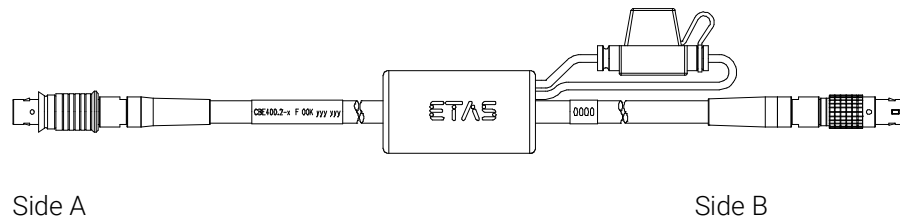
**Fig. 9-7** CBEP425.1 Cable

| Order Name                                                                                    | Short name  | Order Number  |
|-----------------------------------------------------------------------------------------------|-------------|---------------|
| Ethernet Connection and Power Supply Cable, Lemo 1B FGF Lemo 1B FGL Banana (8mc-8fc+2mc), 3 m | CBEP425.1-3 | F 00K 105 972 |

**NOTE**  
 The wiring of the modules of the ES400 product family with each other and the cables required by the modules are described in the documentation of the ES4xx modules.

### 9.3.2 Ethernet Connection Cable

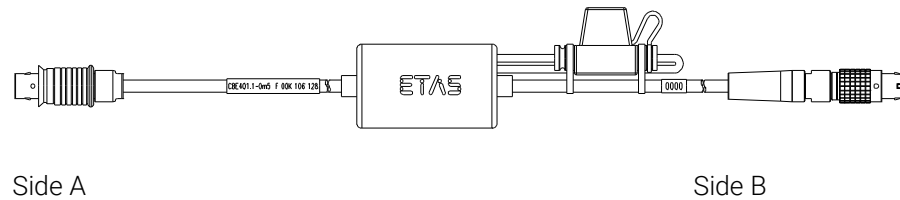
#### CBE400.2 Cable



**Fig. 9-8** CBE400.2 Cable

| Order Name                                                           | Short name | Order Number |
|----------------------------------------------------------------------|------------|--------------|
| Ethernet PC Connection Cable, Lemo 1B FGF Lemo 1B FGL (8mc-8fc), 3 m | CBE400.2-3 | F00K 104 920 |

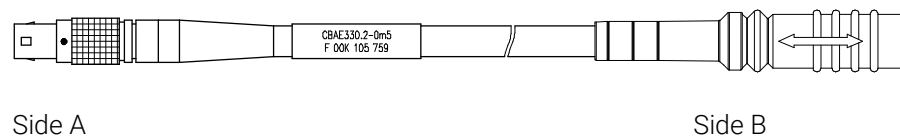
#### CBE401.1 Cable



**Fig. 9-9** CBE401.1 Cable

| Order Name                                                                            | Short name   | Order Number |
|---------------------------------------------------------------------------------------|--------------|--------------|
| Ethernet PC Connection Cable, Highly Flexible, Lemo 1B FGF Lemo 1B FGL (8mc-8fc), 0m5 | CBE401.1-0m5 | F00K 106 128 |

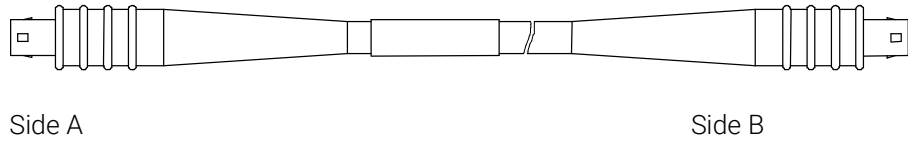
### 9.3.3 Ethernet Connection Adapter Cable



**Fig. 9-10** CBAE330.2 Cable

| Order Name                                                                                          | Short name  | Order Number  |
|-----------------------------------------------------------------------------------------------------|-------------|---------------|
| Ethernet Connection Adapter Cable 1 Gbit/s to 100 Mbit/s, Lemo 1B PHE - Lemo 1B FGF (10fc-8mc), 0m5 | CBAE330-0m5 | F 00K 105 759 |

## 9.4 ETK Interface Cable



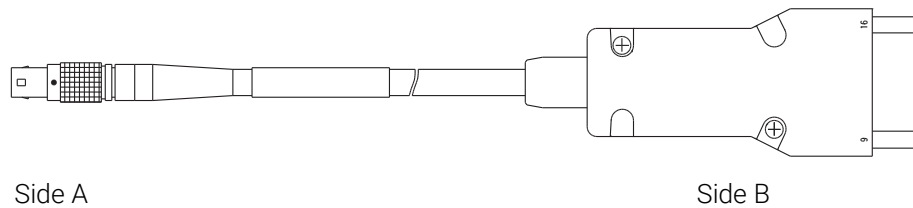
**Fig. 9-11** CBM150-x Cable

| Order Name                                                              | Short name | Order Number  |
|-------------------------------------------------------------------------|------------|---------------|
| ETK Interface Cable 100 Mbit/s, Lemo 1B FFG Lemo 1B FFG (4mc-4mc), 3 m  | CBM150-3   | F 00K 102 556 |
| ETK Interface Cable 100 Mbit/s, Lemo 1B FFG Lemo 1B FFG (4mc-4mc), 5 m  | CBM150-5   | F 00K 102 557 |
| ETK Interface Cable 100 Mbit/s, Lemo 1B FFG Lemo 1B FFG (4mc-4mc), 10 m | CBM150-10  | F 00K 102 553 |

## 9.5 CAN/LIN Interface Cable and Adapter

### 9.5.1 CAN Interface Cable

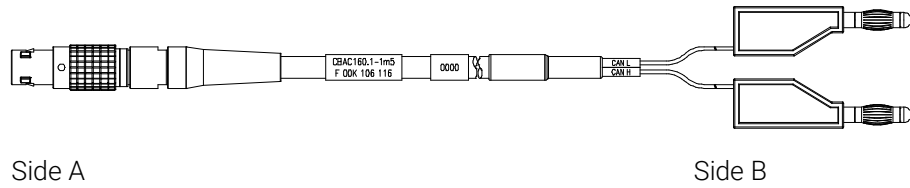
#### CBAC150-2m5 Cable



**Fig. 9-12** CBAC150-2m5 Cable

| Order Name                                                   | Short name  | Order Number  |
|--------------------------------------------------------------|-------------|---------------|
| CAN Interface Cable, OBDII J1962 Lemo 1B FGC (16mc-8mc), 2m5 | CBAC150-2m5 | F 00K 104 159 |

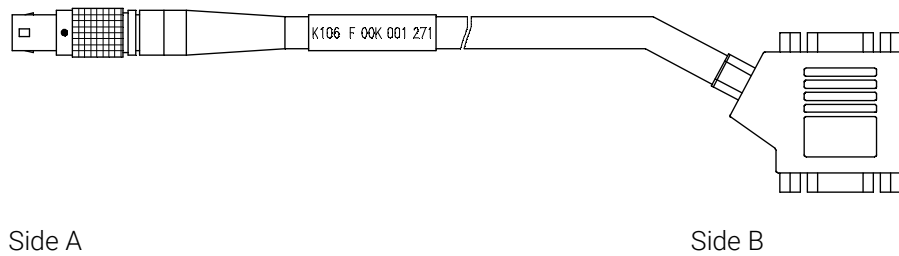
### CBAC160-1m5 Cable



**Fig. 9-13** CBAC160-1m5 Cable

| Order Name                                                 | Short name    | Order Number |
|------------------------------------------------------------|---------------|--------------|
| CAN Interface Cable, Lemo 1B FGC - Banana (8mc - 2mc), 1m5 | CBAC160.1-1m5 | F00K 106 116 |

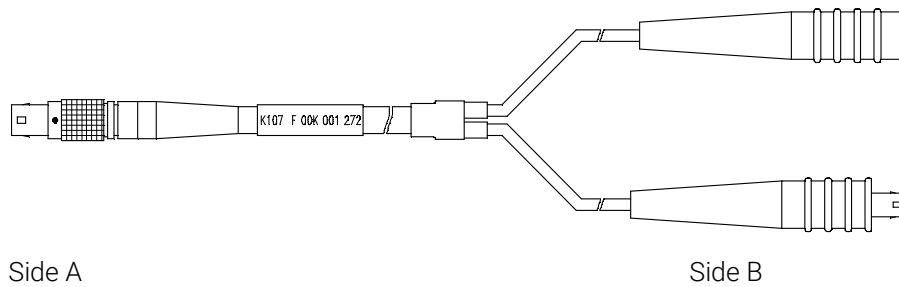
### K106 Cable



**Fig. 9-14** K106 Cable

| Order Name                                                   | Short name | Order Number  |
|--------------------------------------------------------------|------------|---------------|
| CAN Interface Y-Cable, Lemo 1B FGC 2xDSUB (8mc-9fc+9mc), 2 m | K106       | F 00K 001 271 |

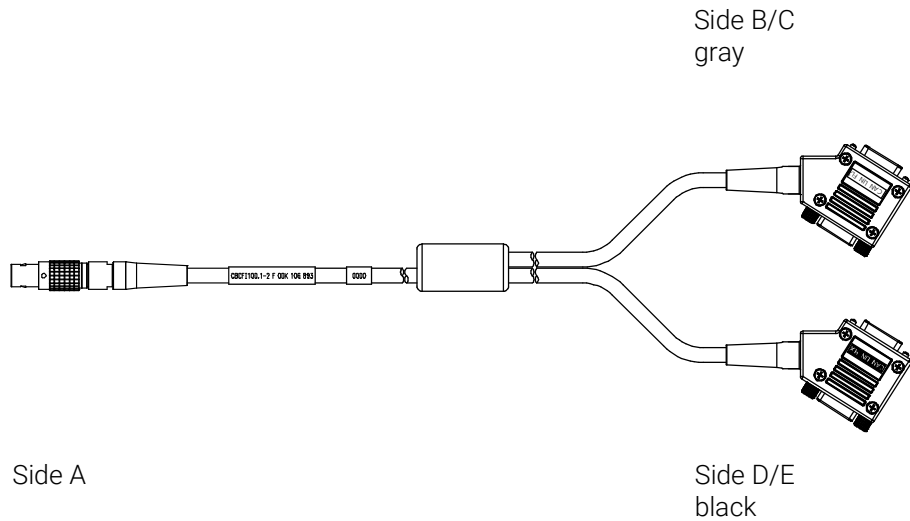
### K107 Cable



**Fig. 9-15** K107 Cable

| Order Name                                                                      | Short name | Order Number  |
|---------------------------------------------------------------------------------|------------|---------------|
| CAN Interface Y-Cable, Lemo 1B FGC Lemo 0S PCA Lemo 0S FFA (8mc,-2fc+2mc) , 2 m | K107       | F 00K 001 272 |

### 9.5.2 CBCFI100 Cable



**Fig. 9-16** CBCFI100 Cable

| Order Name                                                                        | Short Name | Order Number  |
|-----------------------------------------------------------------------------------|------------|---------------|
| CAN, FlexRay and LIN Interface Y-Cable, Lemo 1B FGC - 2xDSUB (8mc-9fc + 9mc), 2 m | CBCFI100-2 | F 00K 106 893 |

#### Mapping of DSUB Socket Plug Combinations of the Cable

With the cable CBCFI100 both CAN interfaces of one connection can be used simultaneously. The 8-pin Lemo plug of the CBCFI100 cable can be connected either to the CAN1/CAN3 interface or the CAN2/CAN4 interface.

At the other end of the CBCFI100 cable are two 9-pin DSUB socket plug combinations for connection to the CAN bus:

- a socket plug combination (side B and C) marked in gray
- a socket plug combination (side D and E) marked in black

#### Mapping of DSUB Socket Plug Combinations to ES593.1-D

If one CBCFI100 cable each is used at the interfaces CAN1/CAN3 and CAN2/CAN4 of ES593.1-D, these interfaces are mapped to the DSUB socket plug combinations of both cables as follows:

| ES593.1-D Connection | Cable | Cables in CBCFI100 Fig. 9-16                 |                                               |
|----------------------|-------|----------------------------------------------|-----------------------------------------------|
|                      |       | Socket (B) / plug (C)<br>(DSUB, color: gray) | Socket (D) / plug (E)<br>(DSUB, color: black) |
| CAN1/CAN3            | 1     | CAN1                                         | CAN3                                          |
| CAN2/CAN4            | 2     | CAN2                                         | CAN4                                          |

### Connector Pin assignment of Cable at the CAN1/CAN3 Interface

The DSUB socket plug combinations of the CBCFI100 cable are assigned the signals of the CAN1/CAN3 interface of ES593.1-D as follows:

| Lemo<br>[Side A] |            |  | DSUB,<br>Color: gray<br>[Side B, Side C]  |            |
|------------------|------------|--|-------------------------------------------|------------|
| Pin              | Signal     |  | Pin                                       | Signal     |
| 1                | -          |  | 1                                         | -          |
| 2                | CAN1_LOW   |  | 2                                         | CAN1_LOW   |
| 3                | CAN1_GND_1 |  | 3                                         | CAN1_GND_1 |
| 4                | CAN3_HIGH  |  | 4                                         | -          |
| 5                | CAN3_GND   |  | 5                                         | -          |
| 6                | CAN1_GND_2 |  | 6                                         | CAN1_GND_2 |
| 7                | CAN1_HIGH  |  | 7                                         | CAN1_HIGH  |
| 8                | CAN3_LOW   |  | 8                                         | -          |
|                  |            |  | 9                                         | -          |
|                  |            |  |                                           |            |
|                  |            |  | DSUB,<br>Color: black<br>[Side D, Side E] |            |
|                  |            |  | Pin                                       | Signal     |
|                  |            |  | 1                                         | -          |
|                  |            |  | 2                                         | CAN3_LOW   |
|                  |            |  | 3                                         | CAN3_GND   |
|                  |            |  | 4                                         | -          |
|                  |            |  | 5                                         | -          |
|                  |            |  | 6                                         | -          |
|                  |            |  | 7                                         | CAN3_HIGH  |
|                  |            |  | 8                                         | -          |
|                  |            |  | 9                                         | -          |

### Connector Pin assignment of Cable at the CAN2/CAN4 Interface

The DSUB socket plug combinations of the CBCF1100 cable are assigned the signals of the CAN2/CAN4 interface of ES593.1-D as follows:

| Lemo<br>[Side A] |            | DSUB,<br>Color: gray<br>[Side B, Side C]  |            |
|------------------|------------|-------------------------------------------|------------|
| Pin              | Signal     | Pin                                       | Signal     |
| 1                | -          | 1                                         | -          |
| 2                | CAN2_LOW   | 2                                         | CAN2_LOW   |
| 3                | CAN2_GND_1 | 3                                         | CAN2_GND_1 |
| 4                | CAN4_HIGH  | 4                                         | -          |
| 5                | CAN4_GND   | 5                                         | -          |
| 6                | CAN2_GND_2 | 6                                         | CAN2_GND_2 |
| 7                | CAN2_HIGH  | 7                                         | CAN2_HIGH  |
| 8                | CAN4_LOW   | 8                                         | -          |
|                  |            | 9                                         | -          |
|                  |            |                                           |            |
|                  |            | DSUB,<br>Color: black<br>[Side D, Side E] |            |
|                  |            | Pin                                       | Signal     |
|                  |            | 1                                         | -          |
|                  |            | 2                                         | CAN4_LOW   |
|                  |            | 3                                         | CAN4_GND   |
|                  |            | 4                                         | -          |
|                  |            | 5                                         | -          |
|                  |            | 6                                         | -          |
|                  |            | 7                                         | CAN4_HIGH  |
|                  |            | 8                                         | -          |
|                  |            | 9                                         | -          |

### 9.5.3 CAN Termination Resistor

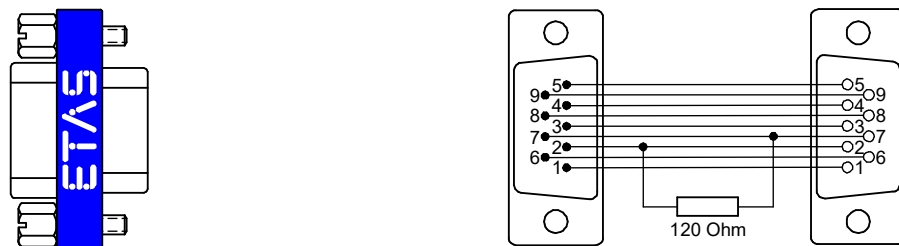


Fig. 9-17 CBCX131-0 Termination Resistor

| Order Name                                       | Short name | Order Number  |
|--------------------------------------------------|------------|---------------|
| CAN 120 & Termination Resistor, 2xDSUB (9fc+9mc) | CBCX131-0  | F 00K 103 786 |

## 10 Ordering Information

---

### 10.1 ES593.1-D

---

#### 10.1.1 ES593.1-D with CBP120 Power Supply Cable

| Order Name                                                              | Short Name | Order Number  |
|-------------------------------------------------------------------------|------------|---------------|
| ES593.1-D Interface Module (1xETK, 2xCAN, 2xLIN, 2xFlexRay, 1xEthernet) | ES593.1-D  | F 00K 107 110 |

##### Package Contents

ES593.1-D Interface Module (1xETK, 2xCAN, 2xLIN, 2xFlexRay, 1xEthernet),  
Cable CBE100-3, CBP120-2,  
T-Bracket for Housing, ES523\_CD,  
List "Content of this Package",  
QNX Licence with AP for ES5xx,  
ES5xx Premium Line Safety Advice,  
China-RoHS-leaflet\_Compact\_green\_cn

##### NOTE

The cables for additional interfaces of the module are not part of the delivery scope and must be ordered separately (see chapter 10.2 on page 65).

#### 10.1.2 ES593.1-D with CBP1205 Power Supply Cable

| Order Name                                                                                | Short Name  | Order Number  |
|-------------------------------------------------------------------------------------------|-------------|---------------|
| ES593.1-D Interface Module (1xETK, 2xCAN, 2xLIN, 2xFlexRay, 1xEthernet) with Safety Cable | ES593.1-D-S | F 00K 110 424 |

##### Package Contents

ES593.1-D Interface Module (1xETK, 2xCAN, 2xLIN, 2xFlexRay, 1xEthernet),  
Cable CBE100-3, CBP1205-2,  
T-Bracket for Housing, ES523\_CD,  
List "Content of this Package",  
QNX Licence with AP for ES5xx,  
ES5xx Premium Line Safety Advice,  
China-RoHS-leaflet\_Compact\_green\_cn

##### NOTE

The cables for additional interfaces of the module are not part of the delivery scope and must be ordered separately (see chapter 10.2 on page 65).



## 10.2 Cable and Accessoires

### NOTE

Only use the ETAS cables named in this User's Guide at the interfaces of the ES593.1-D. The maximum admissible cable lengths must be adhered to.

### NOTE

Custom cables can be produced according to your specifications. For more information on custom cables, please contact your local ETAS sales representative.

### 10.2.1 Cable for the "7-29 V DC" Connection

| Order Name                                                     | Short Name | Order Number  |
|----------------------------------------------------------------|------------|---------------|
| Power Supply Cable, Lemo 1B FGJ Banana (2fc-2mc), 2 m          | CBP120-2   | F 00K 102 584 |
| Power Supply Cable, Lemo 1B FGJ – Safety Banana (2fc-2mc), 2 m | CBP1205-2  | F 00K 110 023 |

### 10.2.2 "HOST" Interface Cable

| Order Name                                                      | Short Name | Order Number  |
|-----------------------------------------------------------------|------------|---------------|
| Ethernet PC Connection Cable, Lemo 1B FGG - RJ45 (8mc-8mc), 3 m | CBE100-3   | F 00K 102 559 |
| Ethernet PC Connection Cable, Lemo 1B FGG - RJ45 (8mc-8mc), 8 m | CBE100-8   | F 00K 102 571 |

### 10.2.3 "ETH1 and ETH2" Interface Cable

#### Ethernet Connection and Power Supply Cable

| Order Name                                                                                                  | Short Name  | Order Number  |
|-------------------------------------------------------------------------------------------------------------|-------------|---------------|
| Ethernet Connection and Power Supply Cable, Lemo 1B FGF Lemo 1B FGD (8mc-8mc), 0m45                         | CBE130-0m45 | F 00K 102 748 |
| Ethernet Connection and Power Supply Cable, Lemo 1B FGF Lemo 1B FGD (8mc-8mc), 3 m                          | CBE130-3    | F 00K 102 587 |
| Ethernet Connection and Power Supply Cable with Angular Connectors, Lemo 1B FMF Lemo 1B FMD (8mc-8mc), 0m45 | CBE140-0m45 | F 00K 104 153 |
| Ethernet Connection and Power Supply Cable, Lemo 1B FGF Lemo 1B FGL Banana (8mc-8fc+2mc), 3 m               | CBEP420.1-3 | F 00K 105 292 |
| Ethernet Connection and Power Supply Cable, Lemo 1B FGF Lemo 1B FGL Banana (8mc-8fc+2mc), 3 m               | CBEP425.1-3 | F 00K 105 972 |

### Ethernet Connection Cable

| Order Name                                                                            | Short Name   | Order Number |
|---------------------------------------------------------------------------------------|--------------|--------------|
| Ethernet PC Connection Cable, Lemo 1B FGF Lemo 1B FGL (8mc-8fc), 3 m                  | CBE400.2-3   | F00K 104 920 |
| Ethernet PC Connection Cable, Highly Flexible, Lemo 1B FGF Lemo 1B FGL (8mc-8fc), 0m5 | CBE401.1-0m5 | F00K 106 128 |

### Ethernet Connection Adapter Cable

| Order Name                                                                                          | Short Name  | Order Number |
|-----------------------------------------------------------------------------------------------------|-------------|--------------|
| Ethernet Connection Adapter Cable 1 Gbit/s to 100 Mbit/s, Lemo 1B PHE - Lemo 1B FGF (10fc-8mc), 0m5 | CBAE330-0m5 | F00K 105 709 |

### 10.2.4 "ETK" Interface Cable

| Order Name                                                              | Short Name | Order Number  |
|-------------------------------------------------------------------------|------------|---------------|
| ETK Interface Cable 100 Mbit/s, Lemo 1B FFG Lemo 1B FFG (4mc-4mc), 3 m  | CBM150-3   | F 00K 102 556 |
| ETK Interface Cable 100 Mbit/s, Lemo 1B FFG Lemo 1B FFG (4mc-4mc), 5 m  | CBM150-5   | F 00K 102 557 |
| ETK Interface Cable 100 Mbit/s, Lemo 1B FFG Lemo 1B FFG (4mc-4mc), 10 m | CBM150-10  | F 00K 102 553 |

### 10.2.5 "CAN/LIN" Interface Cable and Adapter

#### CAN Interface Cable

| Order Name                                                                       | Short Name    | Order Number  |
|----------------------------------------------------------------------------------|---------------|---------------|
| CAN Interface Cable, OBDII J1962 Lemo 1B FGC (16mc-8mc), 2m5                     | CBAC150-2m5   | F 00K 104 159 |
| CAN Interface Cable, Lemo 1B FGC - Banana (8mc - 2mc), 1m5                       | CBAC160.1-1m5 | F00K 106 116  |
| CAN Interface Y-Cable, Lemo 1B FGC 2xDSUB (8mc-9fc+9mc), 2 m                     | K106          | F 00K 001 271 |
| CAN Interface Y-Cable, Lemo 1B FGC Lemo 0S PCA Lemo 0S FFA (8mc,-2fc+2mc) , 2 m  | K107          | F 00K 001 272 |
| CAN, FlexRay and LIN Interface Y-Cable, Lemo 1B FGC - 2xDSUB (8mc-9fc+ 9mc), 2 m | CBCFI100-2    | F 00K 106 893 |

#### CAN Termination Resistor

| Order Name                                       | Short Name | Order Number  |
|--------------------------------------------------|------------|---------------|
| CAN 120 & Termination Resistor, 2xDSUB (9fc+9mc) | CBCX131-0  | F 00K 103 786 |

### 10.2.6 Housing Accessories

| Order Name                  | Short Name | Order Number  |
|-----------------------------|------------|---------------|
| T-Bracket for ES600 Housing | ES600_H_TB | F 00K 001 925 |

### 10.2.7 Software

| Order Name                                                           | Short Name | Order Number  |
|----------------------------------------------------------------------|------------|---------------|
| INCA ES5xx Software Integration Package<br>for INCA V6.2.1 and later | ISW_ES5xx  | F 00K 106 641 |

## 11 Contact Information

---

### ETAS Headquarters

ETAS GmbH

Borsigstraße 24  
70469 Stuttgart  
Germany

Phone: +49 711 3423-0  
Fax: +49 711 3423-2106  
Internet: [www.etas.com](http://www.etas.com)

### ETAS Subsidiaries and Technical Support

For details of your local sales office as well as your local technical support team and product hotlines, take a look at the ETAS website:

ETAS subsidiaries            Internet: [www.etas.com/en/contact.php](http://www.etas.com/en/contact.php)  
ETAS technical support    Internet: [www.etas.com/en/hotlines.php](http://www.etas.com/en/hotlines.php)

## Figures

---

|           |                                                                       |    |
|-----------|-----------------------------------------------------------------------|----|
| Fig. 4-1  | View of the Device                                                    | 14 |
| Fig. 4-2  | Front Panel                                                           | 16 |
| Fig. 4-3  | Back Panel                                                            | 16 |
| Fig. 4-4  | Flash Codes                                                           | 16 |
| Fig. 5-1  | Block Diagram                                                         | 20 |
| Fig. 6-1  | Levering Off the Plastic Foot                                         | 26 |
| Fig. 6-2  | Tapped blind hole                                                     | 27 |
| Fig. 6-3  | Connecting the ES593.1-D to Another Module                            | 28 |
| Fig. 6-4  | ES593.1-D and ES595.1 with ES400 modules, XETK, ETK and vehicle buses | 29 |
| Fig. 6-5  | Example of a Module Network                                           | 31 |
| Fig. 8-1  | WEEE Symbol                                                           | 44 |
| Fig. 8-2  | Power Supply Interface (7-29V)                                        | 50 |
| Fig. 8-3  | Host Interface (HOST)                                                 | 50 |
| Fig. 8-4  | Ethernet Interfaces (ETH1 and ETH2)                                   | 51 |
| Fig. 8-5  | ETK Interface (ETK)                                                   | 51 |
| Fig. 8-6  | CAN Interface (CAN1 and CAN3)                                         | 52 |
| Fig. 8-7  | CAN Interface (CAN2 and CAN4)                                         | 52 |
| Fig. 9-1  | Cable CBP120-2 (power supply cable with standard banana plugs)        | 54 |
| Fig. 9-2  | Cable CBP1205 (power supply cable with safety banana plugs)           | 55 |
| Fig. 9-3  | CBE100-x Cable                                                        | 55 |
| Fig. 9-4  | CBE130-x Cable                                                        | 56 |
| Fig. 9-5  | CBE140-0m45 Cable                                                     | 56 |
| Fig. 9-6  | CBEP420.1 Cable                                                       | 57 |
| Fig. 9-7  | CBEP425.1 Cable                                                       | 57 |
| Fig. 9-8  | CBE400.2 Cable                                                        | 58 |
| Fig. 9-9  | CBE401.1 Cable                                                        | 58 |
| Fig. 9-10 | CBAE330.2 Cable                                                       | 58 |
| Fig. 9-11 | CBM150-x Cable                                                        | 59 |
| Fig. 9-12 | CBAC150-2m5 Cable                                                     | 59 |
| Fig. 9-13 | CBAC160-1m5 Cable                                                     | 60 |
| Fig. 9-14 | K106 Cable                                                            | 60 |
| Fig. 9-15 | K107 Cable                                                            | 60 |
| Fig. 9-16 | CBCFI100 Cable                                                        | 61 |
| Fig. 9-17 | CBCX131-0 Termination Resistor                                        | 63 |

# Index

---

## Symbols

|                                 |    |
|---------------------------------|----|
| "Wake Up" Function              | 25 |
| "Wake-Up" Function              | 24 |
| "Wake Up" Function, configuring | 32 |

## A

|                         |    |
|-------------------------|----|
| Accident prevention     | 9  |
| Advanced Operating Mode | 23 |
| Applications            | 28 |
| Software Requirements   | 46 |

## B

|                                |    |
|--------------------------------|----|
| Back Panel, Interfaces         | 16 |
| Basic Operating Mode           | 22 |
| Block Diagram                  | 20 |
| Bus Terminating Resistor, CAN- | 24 |

## C

### Cable

|             |    |
|-------------|----|
| CBAC150-2m5 | 59 |
| CBAC160-1m5 | 60 |
| CBAE330.2   | 58 |
| CBCF1100    | 61 |
| CBE100-x    | 55 |
| CBE130-x    | 56 |
| CBE140-0m45 | 56 |
| CBE400.2    | 58 |
| CBE401.1    | 58 |
| CBEP420.1   | 57 |
| CBEP425.1   | 57 |
| CBM150-x    | 59 |
| CBP120-2    | 54 |
| CBP1205     | 55 |
| K106        | 60 |
| K107        | 60 |

|                                      |    |
|--------------------------------------|----|
| CAN Bus Terminating Resistor         | 24 |
| CAN Interface (CAN1/LIN1, CAN2/LIN2) | 23 |

|                              |        |
|------------------------------|--------|
| Carrier System               | 26     |
| Cascading Modules            | 21     |
| Clock Pulse                  | 24     |
| Compatibility                | 47, 48 |
| Compatibility Operating Mode | 22     |
| Connecting                   |        |
| Housing                      | 27     |
| Cylinder Screw, M3           | 27     |

## D

### Data

|               |    |
|---------------|----|
| Electrical    | 47 |
| Mechanical    | 43 |
| Technical     | 42 |
| Documentation | 9  |

## E

|                   |    |
|-------------------|----|
| Electrical Data   | 47 |
| Electrical safety | 10 |

|                              |        |
|------------------------------|--------|
| Error LEDs                   | 33     |
| ETAS Device Synchronization  | 24     |
| Ethernet Switch              |        |
| Features                     | 20     |
| ETK interface                | 49, 51 |
| ETK Interface (ETK)          | 22     |
| ETK Interface Operating Mode |        |
| Advanced                     | 23     |
| Basic                        | 22     |
| Compatibility                | 22     |

## F

|                         |    |
|-------------------------|----|
| Feature                 | 23 |
| Features                | 14 |
| Ethernet Switch         | 20 |
| Firmware Update         | 25 |
| Flash Codes             | 16 |
| Front Panel, Interfaces | 15 |
| Functional Description  | 20 |

## G

|                 |    |
|-----------------|----|
| Getting Started | 26 |
|-----------------|----|

## H

### Hardware

|                      |    |
|----------------------|----|
| System Requirements  | 45 |
| Hardware Description | 14 |
| Housing              | 15 |
| Connecting           | 27 |
| Fastening            | 26 |
| HSP                  | 25 |

## I

|                         |    |
|-------------------------|----|
| Initialization          | 22 |
| Interfaces              | 15 |
| Interfaces, Back Panel  | 16 |
| Interfaces, Front Panel | 15 |

## K

|                |    |
|----------------|----|
| KCC conformity | 44 |
|----------------|----|

## L

|                      |    |
|----------------------|----|
| LEDs                 | 17 |
| Length of Engagement | 27 |
| Link Signal Detector | 24 |

## M

|                 |    |
|-----------------|----|
| Mechanical Data | 43 |
| Module          |    |
| Daisy-Chaining  | 27 |
| Module Network  |    |
| Complex         | 31 |
| Example         | 31 |
| Simple          | 30 |
| Module network  | 21 |

## N

|       |    |
|-------|----|
| Norms | 43 |
|-------|----|

|                                           |       |
|-------------------------------------------|-------|
| <b>O</b>                                  |       |
| ON                                        | 17    |
| Operating Mode                            |       |
| Advanced                                  | 23    |
| Basic                                     | 22    |
| Compatibility                             | 22    |
| Operating Modes                           | 23    |
| ETK Interface                             | 22    |
| Operation                                 |       |
| Conventions                               | 8     |
| Ordering Information                      | 64    |
| <b>P</b>                                  |       |
| PC network adapter                        | 46    |
| Phase Shift                               | 24    |
| Pin Assignment                            | 50    |
| Plastic Foot                              | 26    |
| Power Supply                              | 20    |
| Power Supply of connected Modules         | 21    |
| Product                                   |       |
| Exclusion of liability                    | 9     |
| Product Back                              | 44    |
| <b>Q</b>                                  |       |
| Qualification, required                   | 9     |
| <b>R</b>                                  |       |
| REACH regulation (EU)                     | 45    |
| Receive Data                              | 51    |
| Recycling                                 | 44    |
| RoHS conformity                           |       |
| China                                     | 44    |
| European Union                            | 44    |
| RX                                        | 51    |
| <b>S</b>                                  |       |
| Safety at work                            | 9, 10 |
| Safety notices                            |       |
| basic                                     | 9     |
| Identification                            | 8     |
| Safety precautions                        | 9     |
| Scope of supply                           | 8     |
| Screw Thread                              | 26    |
| Send Data                                 | 51    |
| Standards                                 | 43    |
| Standards and Norms                       | 43    |
| Supply Voltage                            | 51    |
| SYNC-IN                                   | 24    |
| SYNC-OUT                                  | 24    |
| System Requirements                       | 45    |
| <b>T</b>                                  |       |
| T-Bracket                                 | 27    |
| Technical Data                            | 42    |
| Termination Resistor                      |       |
| CBCX131-0                                 | 63    |
| Time Synchronization Unit                 | 24    |
| Troubleshooting                           | 33    |
| TX                                        | 51    |
| <b>U</b>                                  |       |
| UBATT                                     | 51    |
| UKCA conformity                           | 44    |
| Use, intended                             | 9     |
| <b>W</b>                                  |       |
| Waste Electrical and Electronic Equipment |       |
|                                           | 44    |
| Web Interface                             | 25    |
| WEEE                                      | 44    |
| WEEE take-back System                     | 45    |
| Wiring                                    | 29    |