



DRIVING EMBEDDED EXCELLENCE

# ETAS COSYM V3.2.0

## Getting Started Guide

## Copyright

---

The data in this document may not be altered or amended without special notification from ETAS GmbH. ETAS GmbH undertakes no further obligation in relation to this document. The software described in it can only be used if the customer is in possession of a general license agreement or single license. Using and copying is only allowed in concurrence with the specifications stipulated in the contract.

Under no circumstances may any part of this document be copied, reproduced, transmitted, stored in a retrieval system or translated into another language without the express written permission of ETAS GmbH.

© **Copyright 2022** ETAS GmbH, Stuttgart

The names and designations used in this document are trademarks or brands belonging to the respective owners.

MATLAB and Simulink are registered trademarks of The MathWorks, Inc. See [mathworks.com/trademarks](https://www.mathworks.com/trademarks) for a list of additional trademarks.

COSYM V3.2.0 - Getting Started Guide R01 EN - 08.2022

## Contents

---

<b>1</b>	<b>Safety and Privacy Information</b>	<b>6</b>
1.1	Privacy Notice	6
1.1.1	Data Processing	6
1.1.2	Data and Data Categories	6
<b>2</b>	<b>Getting Started</b>	<b>7</b>
2.1	Target Group	7
<b>3</b>	<b>Installation</b>	<b>8</b>
3.1	Preparation	8
3.2	Delivery Package	8
3.3	User Privileges	8
3.4	System Requirements	9
3.4.1	General	9
3.4.2	Interoperability with other Applications	10
3.4.3	Compilers	11
3.4.4	Simulation Result Visualization	11
3.4.5	Supporting Versions of COSYM for Migration	12
3.5	Installing COSYM	13
3.6	Silent Installation/Uninstallation	19
3.6.1	Using Configuration File	19
3.6.2	Executing Silent Installation/Uninstallation	19
3.6.3	Silent Installation Commands and Examples	21
3.7	Setting up a SiL Linux System	23
3.8	Installing COSYM-CAR	25
3.9	Associating COSYM with MATLAB®	27
3.10	Dissociating with MATLAB®	27
<b>4</b>	<b>Administration</b>	<b>29</b>
4.1	Installer Components	29
4.2	Network/Port Configuration	31
4.2.1	Port Used for COSYM	31
4.3	Firewall Configuration	32
4.4	Server Security	32
4.5	Server Performance	33

4.6	Build Information .....	33
<b>5</b>	<b>Licensing the Software .....</b>	<b>34</b>
5.1	ETAS License Models .....	34
5.2	How to get a License .....	34
5.2.1	What Information is Required? .....	35
5.3	The License File .....	36
5.4	Adding a License File .....	36
5.5	License Expiry .....	38
5.6	Borrowing a License .....	39
5.7	COSYM Licenses .....	41
5.7.1	Licenses to Use COSYM .....	41
5.7.2	Licenses to Use Editors .....	42
<b>6</b>	<b>Launching COSYM .....</b>	<b>43</b>
6.1	Manuals and Tutorials .....	44
6.1.1	References .....	44
6.2	COSYM Tools .....	45
6.3	COSYM Log Files .....	45
<b>7</b>	<b>Exiting COSYM .....</b>	<b>46</b>
<b>8</b>	<b>Upgrading COSYM .....</b>	<b>47</b>
8.1	Upgrading COSYM Without Uninstalling the Previous Version .....	47
<b>9</b>	<b>Uninstalling .....</b>	<b>49</b>
<b>10</b>	<b>Troubleshooting .....</b>	<b>50</b>
10.1	Error During Installation .....	50
10.2	Error While Installing Or Uninstalling .....	50
10.3	Failing COSYM Installation when ETAS EE Installation Starts .....	51
10.4	Port Error While Launching .....	52
10.5	Getting a Blank Screen After Launching COSYM .....	52
10.6	Getting White Background After Launching COSYM .....	53
10.7	Application Error .....	54
10.8	Installation Failure due to COSYM_SIM Module .....	55
<b>11</b>	<b>Restrictions .....</b>	<b>58</b>
11.1	Parallel Installation .....	58

12	Contact Information .....	59
	Index .....	60
	Glossary .....	61
	Figures .....	63

# 1 Safety and Privacy Information

---

## 1.1 Privacy Notice

---

Your privacy is important to ETAS GmbH so we have created the following privacy statement that informs you which data is processed in COSYM, which data categories COSYM uses, and which technical measure you have to take to ensure the user's privacy. Additionally, we provide further instructions where this product stores personal data, you can delete the same.

### 1.1.1 Data Processing

Note that personal data is processed when using this product. The purchaser of this product is responsible for the legal conformity of processing the data in accordance with Article 4 No. 7 of the General Data Protection Regulation (GDPR). As the manufacturer, ETAS GmbH is not liable for any mishandling of this data.

### 1.1.2 Data and Data Categories

Please note that this product creates files containing file names and file paths, e.g. for purposes of error analysis, referencing source libraries, or for communicating with third party programs.

The same file names and file paths may contain personal data, if they refer to the current user's personal directory or sub directories (e.g., `C:\Users\\Documents\...`).

Furthermore, using ETAS Rapid Prototyping solutions in test vehicles connected to real sensors, buses or ECUs, the ETAS tools may get access to personal data of the driver.

This data can also be stored using dataloggers as provided by the ETAS Experiment Environment.

When using the ETAS License Manager in combination with user-based licenses, particularly the following personal data can be recorded for the purposes of license management:

- Communication data: IP address
- User data: UserID, WindowsUserID

## 2 Getting Started

---

This document is aimed at helping new users in getting started with Co-simulation of Systems (COSYM) which is an ETAS Product.

It provides information on preparation before installation, delivery packages, and user privileges. The sequences of both installation and uninstallation of COSYM are provided.

For further information, see [COSYM\\_V3.2.0\\_User\\_Guide](#) document.

You can also work without GUI using the provided Application Programming Interfaces (APIs), refer to COSYM APIs chapter "COSYM REST APIs" in the [COSYM\\_V3.2.0\\_User\\_Guide](#) document for more details.

This document also provides information on COSYM-CAR and SiL Linux installation/uninstallation procedure.

### 2.1 Target Group

---

This manual addresses qualified personnel working in the fields of automobile control unit development and calibration. Specialized knowledge in the areas of embedded systems and simulation is required.

## 3 Installation

---

### 3.1 Preparation

---

Check the delivery package to ensure that it has all the deliverables ("Delivery Package" below). Make sure that your system corresponds to the system requirements. Depending on the operating system and network connection used, you must ensure that you have the necessary user privileges.

### 3.2 Delivery Package

---

The delivery package of COSYM includes:

- Software DVD which comprises of COSYM installer.
- Getting Started Guide.

### 3.3 User Privileges

---

You must have "Administrator Rights" to perform the following operations:

- Installation/uninstallation of COSYM.



#### Note

---

In case administrator rights are not available, contact your system administrator.



## 3.4 System Requirements

This section describes the required hardware and software components to install and run different use cases in COSYM. Along with these prerequisites, it is necessary to have a valid license(s) as described in the ["COSYM Licenses" on page 41](#) section.

### 3.4.1 General

The following system requirements are necessary to install and run COSYM.

	Minimum requirements	Recommended
<b>Hardware</b>	<ul style="list-style-type: none"> <li>• Intel Core i5-8500 6x3.0 GHz</li> <li>• 8 GB RAM</li> <li>• DVD ROM Drive</li> <li>• Ethernet adapter</li> <li>• Graphics card with a minimal monitor resolution of 1600x900 with 32-bit color (HD ready)</li> <li>• 8 GB disk space</li> </ul>	<ul style="list-style-type: none"> <li>• Intel Xeon 6x3.7 GHz</li> <li>• 32 GB RAM</li> <li>• DVD ROM Drive</li> <li>• Ethernet adapter with Express card</li> <li>• Graphics card with a monitor resolution of 1920x1024 with 32-bit color (HD)</li> <li>• 16 GB disk space</li> </ul>
<b>Operating system</b>	<ul style="list-style-type: none"> <li>• Windows 10 (64-bit)</li> </ul>	<ul style="list-style-type: none"> <li>• Windows 10 (64-bit)</li> <li>• Windows Server 2019 (64-bit)</li> </ul>
<b>Java</b>	<ul style="list-style-type: none"> <li>• Java 11</li> </ul>	<ul style="list-style-type: none"> <li>• Java 11</li> </ul>

**Tab. 3-1:** General system requirements

It is recommended to use operating system and keyboard in English (US).

### 3.4.2 Interoperability with other Applications

COSYM operates with the applications listed in the [Tab. 3-2](#):

Application	Purpose	Supported versions
ETAS Experiment Environment (ETAS EE)	Run and visualize the simulation experiment	V3.9.2
ETAS INCA	Calibrate the VECU parameters during simulation	V7.2.6, V7.3.6, V7.3.7, V7.4
ETAS INCA for SiL (XCP Client)	Generate A2L files	V1.0.0
MOCA Connector	Run simulation using LSS PC use case	V1.0
ETAS License Manager	License management	V1.8.5.53
Parametrization Assistant	Support of Parametrization Assistant feature	V3.2.0
VNET	Setup a VNET interface	V3.2.0
ESSE	Used for SiL simulation	V3.2.0
Xil Runtime	Runtime installation of SiL Linux systems	V2.0
COSYM-CAR	Make the network and restbus configuration based on AUTOSAR	V3.2
MATLAB®/Simulink®	Generating MATLAB®/Simulink® models, tool coupling workflow	R2016a, R2016b, R2017a, R2017b, R2018a, R2018b, R2019a, R2019b, R2020a, R2020b, R2021a (Windows 64-bit)
FMU	Support of FMU models in COSYM	FMI Standard V2.0 for co-simulation
HDF5 library	Store HDF files	V1.8.20
cmake <sup>1.)</sup>	Cross platform tool to manage the build process	V3.17.1-win64

<sup>1.)</sup> The cmake application which is installed with COSYM can be used for COSYM use case only.

Application	Purpose	Supported versions
MDA	Visualize the signals of the generated mf4 files	V7.2.11 and higher version of V7.2.XX where X is the version number. And additionally, V8.5.3.
GCC compiler	Compilation	9.1.0
Visual Studio	Compilation	Visual Studio (Community) 2019

**Tab. 3-2:** Interoperability with other applications

### 3.4.3 Compilers

To build a SiL system, you need to have an appropriate compiler. The build process takes care of the compilation internally.

COSYM supports the compilers mentioned below:

- GCC 9.1.0 compiler of 32-bit/64-bit  
COSYM ships GCC 9.1.0 compiler along with the installer and this is used as a default compiler during build.
- Visual Studio (Community) 2019  
It is a freeware and can be downloaded from the internet.

### 3.4.4 Simulation Result Visualization

- HDF5 library
  - This is needed if you want to store HDF files instead of using the data logger mechanisms of the Experiment Environment.
  - It is an open source software and can be downloaded from the internet.
  - The links are given below.  
<https://www.hdfgroup.org/downloads/hdf5/>  
Download the version, `hdf5-1.8.20` from the archived/Support Portal for the prior releases.

#### Note

If you are facing any issues related to downloading the above packages, please contact ETAS Sales team ("Contact Information" on page 59).

- MDA
  - It is needed to visualize the signals of the generated \* .mf4 files that contain the simulation result.
  - Please contact ETAS sales manager to install MDA.

### 3.4.5 Supporting Versions of COSYM for Migration

COSYM supports migrating the projects created in the two previous versions of COSYM into a latest version. The migration takes place only for the SiL projects as COSYM V3.2.0 supports SiL use case only.



#### Note

The systems mapped with HiL targets or the systems containing HiL models in a project should be adapted to SiL before migrating into COSYM V3.2.0.

The supported versions are as below.

- COSYM V3.1.0
- COSYM V3.0.0

## 3.5 Installing COSYM

---

It is necessary to consider the points listed below while installing COSYM.

- If you get a security alert from Windows Firewall configuration during COSYM installation, then allow the "mongodb" to communicate with the network and continue the installation process. You will get this alert when you are installing COSYM at first time.
- It is not recommended to install COSYM through network drive. If installation files are in a network drive, then copy the files to your local drive and install. If you install through network drive, you might face issue with the oscilloscope in ETAS Experiment Environment.

### Note

---

- Installation of two or more versions of COSYM in a same system is not supported.
- The lower version of COSYM V3.2.0 should not be installed on a system where COSYM V3.2.0 is installed already. If you want to install the lower version, then uninstall COSYM V3.2.0 manually and install the older version. It is necessary to have the compatible components while installing an older version.

### To install COSYM through installation DVD 1

1. Insert the installation "DVD 1" into your computer disc.
  2. Go to the directory "COSYM V3.2.0 setup files" and run `setup.exe`.
- ⇒ The "Welcome" dialog box is displayed.



Fig. 3-1: Welcome window

3. Click **Next**.
  - ⇒ The "End user license agreement" dialog box is displayed.
4. Read the License Agreement and select **I read and accept the terms in the license agreement** option.

**Note**

You can continue the installation process, only if you accept the license agreement.

5. Click **Next** to continue the installation.
  - ⇒ The "Safety Hints" dialog box is displayed.
6. Read COSYM safety hints and select the checkbox, **I read and accept the safety hints**.

**Note**

Use **Back** to go to the previous window or **Cancel** to cancel or **Next** to proceed with the installation.

7. Click **Next**.
  - ⇒ The "Installation Path" dialog box is displayed to install parameterization assistant.

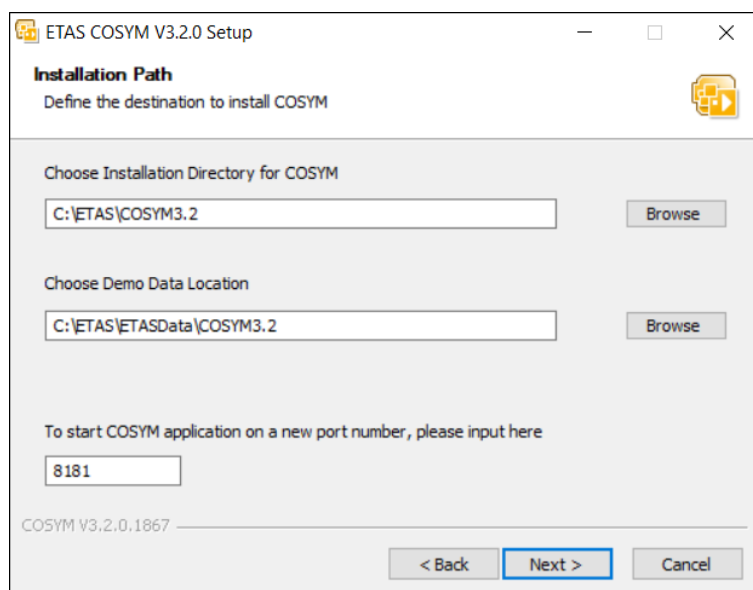
8. The default path to install parameterization assistant is `C:\ETAS\ParameterAssistant3.2`. Specify the new path or click **Browse** to select it if required.
9. The default port used to install parameterization assistant is "3006". Change the port number, if required. Refer to "[Network/Port Configuration](#)" on page 31 for more information.

### Note

The parameterization assistant port number information is saved in the <Parameterization Assistant installation path>\pa-configuration.properties file.

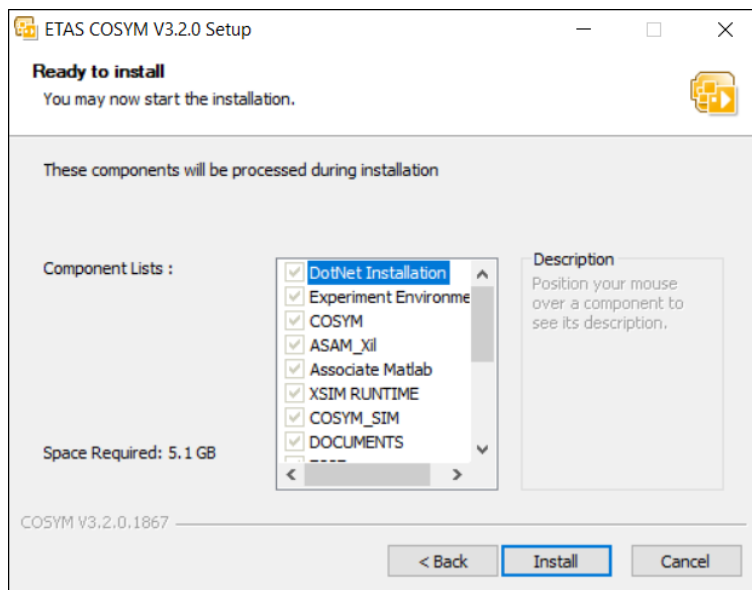
If you want to change the port number after the COSYM installation, then close COSYM and update the new port number in the same file. Restart COSYM again.

10. Click **Next**.
  - ⇒ The "Installation Path" dialog box is displayed.
11. Specify the Installation path or click **Browse...** to select the folder to install COSYM. By default, `C:\ETAS\COSYM3.2` folder will be created for installation.
12. Specify the path or click **Browse...** to select the folder for installing the COSYM demo data. By default, `C:\ETAS\ETASData\COSYM3.2` folder will be created for copying COSYM demo data and automation documents.
13. Change the COSYM port number if required. By default, port 8181 is used for COSYM installation. Refer to "[Network/Port Configuration](#)" on page 31 for more details.



**Fig. 3-2:** An installation path window

14. Click **Next** to proceed to the next installation step.
- ⇒ The "Ready to install" dialog box is displayed.



**Fig. 3-3:** The "Ready to install" dialog box

#### Note

Make sure that you have maintained minimum space in C : \ drive to complete the installation even if you choose other drives. The space required in C : \ drive is the size of the installer and additional 1 GB space for caching and installing 3<sup>rd</sup> party software.

#### Note

The 3<sup>rd</sup> party software like Visual C++, Microsoft.Net applications, etc. are the licensed software which are provided by ETAS. These software also come along with ETAS internal license agreement with Microsoft®.

15. Click **Install**.
- ⇒ The installation process is initiated.

#### Note

A progress indicator shows the progress of installation.

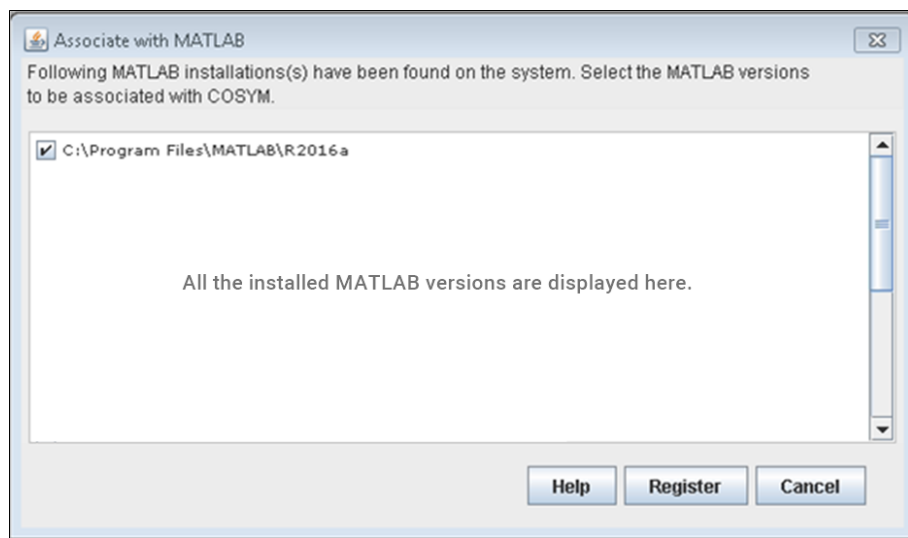
16. An "Associate with MATLAB" window is displayed with the list of all the installed MATLAB versions.



**Note**

The MATLAB® application(s) has(have) to be closed before installing COSYM to associate the target.

17. If MATLAB® application is installed in your system, then select the MATLAB version(s) and click **Register** to continue.
  - ⇒ The "COSYM Communication Toolbox" is added in the Simulink library.



**Fig. 3-4:** MATLAB® versions

**Note**

If MATLAB® application is not installed in your system, the installation process continues and installs COSYM.

You can also associate the target after COSYM installation. Refer to "Associating COSYM with MATLAB®" on page 27 to associate the target.

18. A "Completing ETAS COSYM V3.2.0 Setup" dialog box is displayed after the completion of the installation process.
19. Click **Finish** to complete installation.
  - ⇒ COSYM is installed in the selected location.

It is mandatory to restart your system after the completion of COSYM Installation.

You can also install COSYM through command prompt using "Silent Installation/Uninstallation Commands". Refer to "Silent Installation/Uninstallation" on page 19.

Once you install COSYM, it also delivers the "SiL Linux Runtime" package. The installation files of the package is available inside the <COSYM\_Installation\_Directory>. COSYM will not install this by default. You need to install it explicitly based on your requirement. Refer to the "Setting up a SiL Linux System" on page 23 for more details.

## 3.6 Silent Installation/Uninstallation

---

The COSYM V3.2.0 is enabled with the silent installation which requires no user interaction. The installation or uninstallation process runs in the background.

You are not able to change any of the options once installation process is initiated.

### 3.6.1 Using Configuration File

The `DefaultConfig.cfg` is a configuration file where you can configure the parameters such as `InstallationDirectory`, `DemoDataDirectory`, `CosymPort`, `ParamAsstDirectory`, `ParamPort` which are described in the [Tab. 3-3](#). You can either use the default values of the parameters in the file or you can specify the values as per your needs.

The configuration file is available along with the `COSYM V3.2.0 setup files` inside the provided DVD1 or in the ETAS download portal (<https://license.etas.com/flexnet/operationsportal/logon.do>). To make the changes, you can open this configuration file in any of the text editor, update and save it.

During the execution of the silent installation, you can specify the path of this configuration file.

### 3.6.2 Executing Silent Installation/Uninstallation

- It is necessary either to specify the installation path (`/INST`) or specify the configuration file (`/DefaultCfg`) for execution.
- It is mandatory to specify "YES" to proceed the silent installation for the options, "EULAAccepted" and "SafetyHintsAccepted".

The table below describes the parameters and the values of silent installation.

Parameters	Description	Default Value	Mandatory Value
EULAAccepted	The EULA (End Use License Agreement)	-	YES
SafetyHintsAccepted	The ETAS safety hints	-	YES
/AllowRestart	Specify YES to system restart after installation or specify NO to no system restart	If this command is not mentioned, considered as /A1-lowRestart=NO	-
/S	Command to start the silent installation	-	/S
/INST	Specifying the installation path	-	-
/DefaultCfg	Specifying the config file path	-	-
InstallationDirectory	Installation directory	C:\ETAS\COSYM3.2	-
DemoDataDirectory	Demo data directory	C:\ETAS\ETASData\COSYM3.2	-
CosymPort	COSYM port	8181	-
ParamAsstDirectory	Parameter assistant directory	C:\ETAS\ParameterAssistant3.2	-
ParamPort	Parameter port	3006	-

**Tab. 3-3:** The parameters of silent installation

**To execute the silent installation**

1. Go to **Start** menu on Windows and type "cmd".
  - ⇒ Command prompt window is displayed.
2. Now, run the silent installation/uninstallation command as specified in the section [3.6.3](#) and press <ENTER>.
  - ⇒ The initiated command executes in the background.

**3.6.3 Silent Installation Commands and Examples**

- Installation by using /INST with automatic restart
  - Command:
 

```
<COSYM Installer location> /S /INST=<Installation Path>
/EULAAccepted=YES /SafetyHintsAccepted=YES /AllowRestart=YES
```
  - Example:
 

```
C:\COSYM\COSYM_installer_3_2.exe /S /INST-
T=C:\ETAS\COSYM3.2 /EULAAccepted=YES /SafetyHintsAccepted=YES /AllowRestart=YES
```
- Installation by using /INST without restart
  - Command:
 

```
<COSYM Installer location> /S /INST=<Installation Path>
/EULAAccepted=YES /SafetyHintsAccepted=YES /AllowRestart=NO
<Or>
<COSYM Installer location> /S /INST=<Installation Path>
/EULAAccepted=YES /SafetyHintsAccepted=YES
```
  - Example:
 

```
C:\COSYM\COSYM_installer_3_2.exe /S /INST-
T=C:\ETAS\COSYM3.2 /EULAAccepted=YES /SafetyHintsAccepted=YES /AllowRestart=NO
<Or>
C:\COSYM\COSYM_installer_3_2.exe /S /INST-
T=C:\ETAS\COSYM3.2 /EULAAccepted=YES /SafetyHintsAccepted=YES
```
- Installation by using /DefaultCfg
  - Command:
 

```
<COSYM Installer location> /S /DefaultCfg="<ConfigFilePath>"
/EULAAccepted=YES /SafetyHintsAccepted=YES
```
  - Example:
 

```
C:\COSYM\COSYM_installer_3_2.exe /S /DefaultCfg="C:\COSYM\Config\DefaultConfig.cfg"
```

```
/EULAAccepted=YES /SafetyHintsAccepted=YES
```

```
<Or>
```

Add `/AllowRestart=YES` to the command above to restart system.

- Uninstallation

- Command:

```
<COSYM Installed location> uninstall.exe /S
```

- Example:

```
C:\ETAS\COSYM3.2\uninstall.exe /S
```

```
<Or>
```

Go to the COSYM installed location and execute the command below from the command prompt directly:

```
uninstall.exe /S
```

## 3.7 Setting up a SiL Linux System

Once COSYM is installed, the installation files for SiL Linux system can be found at <COSYM\_installation\_directory>\XSimRuntime folder.

The XSimRuntime folder contains the file below.

- `Install_XSimRuntime.py` file  
A script which helps to install/uninstall the SiL Linux system and install/uninstall the license file too.

### To install the packages on Linux machine

- **Swig**
  - Open a command prompt and execute the command below:  
"sudo apt-get install swig"
- **Python 3 packages**
  - Open a command prompt and execute the command below:  
"sudo apt-get install python3"  
"sudo apt-get install libpython3.7-dev"
- **pip and numpy packages**
  - Open a command prompt and execute the command below:  
"sudo apt install python3-pip"  
"pip3 install numpy"

### To run the script, follow the steps below

- Open a command prompt and execute the command below:
  - `start.bat`
- Run the script `Install_XSimRuntime.py` with the suitable command based on your requirement as given in the [Tab. 3-4](#).

Commands	Remarks
<code>Install_XSimRuntime.py --help</code>	Opens the <b>Help</b> menu
<code>Install_XSimRuntime.py install --package</code>	Installs XSimRuntime if the *.tar file is available in the current script directory. It starts license server too.
<code>Install_XSimRuntime.py install --package &lt;tarPackage file path&gt;</code>	Installs XSimRuntime from the specified path

<pre>Install_ XSimRuntime.py install --license</pre>	<p>Installs license file from the current script directory</p>
<pre>Install_ XSimRuntime.py install --license &lt;license file path&gt;</pre>	<p>Installs license file from the specified path</p>
<pre>Install_ XSimRuntime.py install --package -- ipaddress 192.168.40.20 --user- name admin --password etas</pre>	<p>The <code>--ipaddress</code>, <code>--username</code>, <code>--password</code> are the optional arguments. If there is any change in the default parameters, append these optional arguments with the installation/license command.</p> <p>Default remote PC details are given below:</p> <ul style="list-style-type: none"> <li>• IP address: 192.168.40.20</li> <li>• User name: admin</li> <li>• Password:</li> </ul>
<pre>Install_ XSimRuntime.py unin- stall --package</pre>	<p>Uninstalls XSimRuntime from the remote PC and stops license server</p>
<pre>Install_ XSimRuntime.py unin- stall --license</pre>	<p>Removes all the license files from the remote PC</p>

**Tab. 3-4:** Commands to run the script

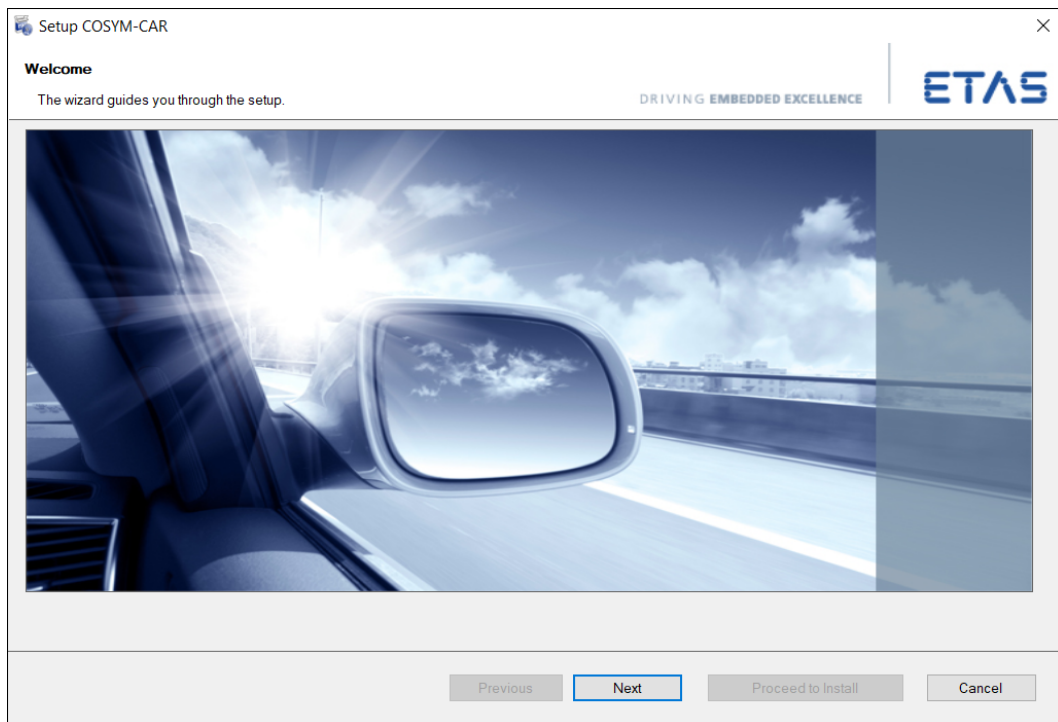


## 3.8 Installing COSYM-CAR

You should have administrator rights to install COSYM-CAR.

### To install COSYM-CAR through installation DVD 2

1. Insert the installation "DVD 2" into your computer disc.
  2. Go to the directory "COSYM-CAR V3.2 setup files" and run `setup.exe`.
- ⇒ The "Welcome" dialog box is displayed.



**Fig. 3-5:** Welcome window

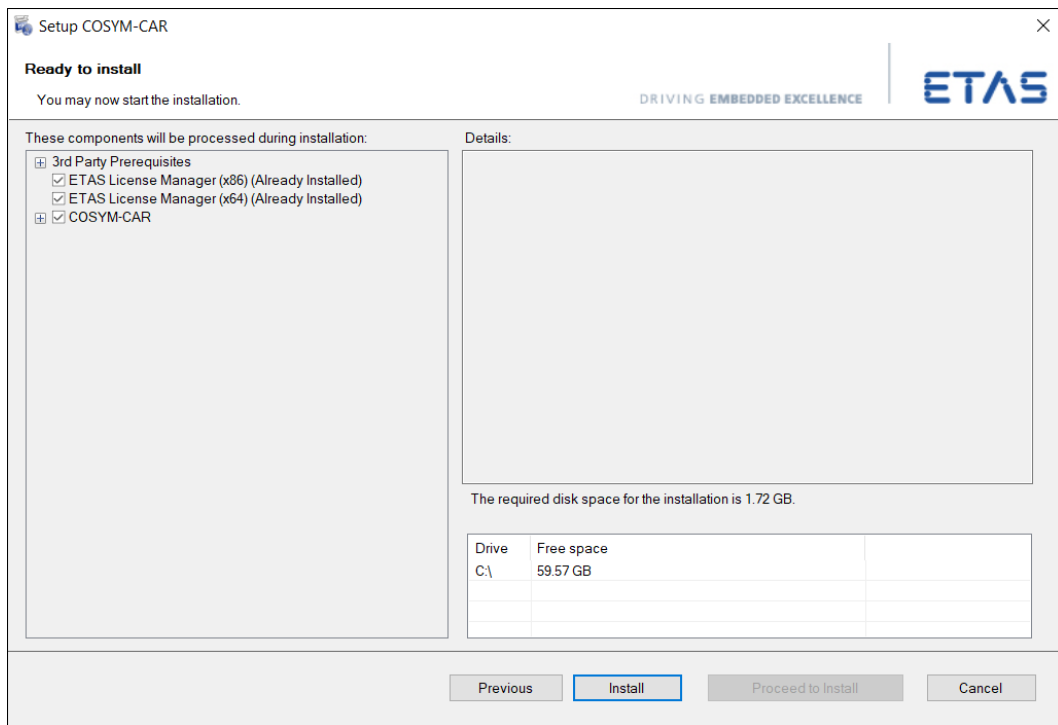
3. Click **Next**.
- ⇒ An "End user license agreement" dialog box is displayed.
4. Read the License Agreement and select **I read and accept the terms in the license agreement** option.
- ⇒ You can continue the installation process, only if you accept the license agreement.

#### **Note**

Use **Back** to go to the previous window or **Cancel** to cancel or **Next** to proceed with the installation.

5. Click **Next** to continue the installation.
- ⇒ An "Installation Path" dialog box is displayed.

6. Specify the Installation path or click **Browse...** to select the folder to install COSYM-CAR. By default, C:\Program Files\ETAS\COSYM-CAR3.2 folder will be created for installation.
  7. Click **Next**.
- ⇒ A "Ready to install" dialog box is displayed.



**Fig. 3-6:** Ready to install window

8. Click **Install**.
- ⇒ The installation process is initiated.
9. An "Installation" dialog box is displayed after completion of the installation process.
  10. Click **Finish** to complete installation.
- ⇒ COSYM-CAR is installed in the selected location.

### 3.9 Associating COSYM with MATLAB®

---

If MATLAB® application is installed after installing the COSYM, then target can be associated with MATLAB® by running the <COSYM Installation Directory>\COSYM Tools\MATLABassociation.exe file. To perform this operation, you must have administrator privileges.

 **Note**

---

MATLAB® application(s) has(have) to be closed before associating the target.

To run the MATLABassociation.exe

1. Double-click on the <COSYM Installation Directory>\COSYM Tools\MATLABassociation.exe file.  
⇒ The "Associate with MATLAB" window is displayed with the list of all installed MATLAB® versions.
2. Select the required MATLAB® versions with which the target has to be associated with.
3. Click **Register** to continue.  
⇒ The "COSYM Communication Toolbox" is added in the Simulink library.

### 3.10 Dissociating with MATLAB®

---

Already associated MATLAB® version(s) can be dissociated by running the <COSYM Installation Directory>\COSYM Tools\MATLABdissociation.exe file.

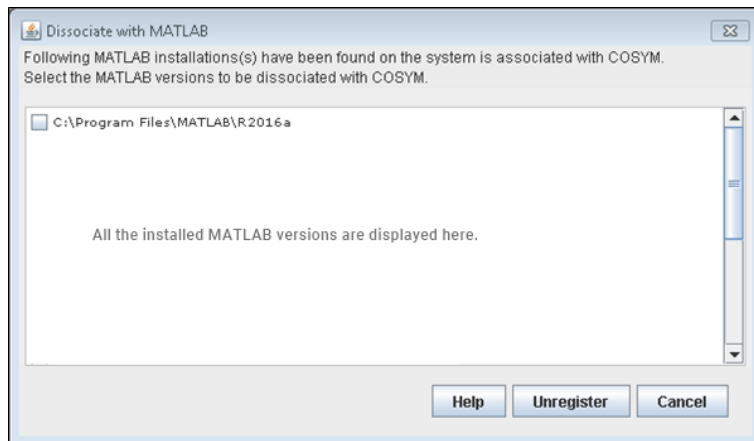
 **Note**

---

MATLAB® application(s) has(have) to be closed before dissociating the target.

To run the MATLABdissociation.exe

1. Double-click on the <COSYM Installation Directory>\COSYM Tools\MATLABdissociation.exe file.  
⇒ The "Disassociate with MATLAB" window is displayed with the list of all installed MATLAB versions.
2. Select the required MATLAB versions with which the target has to be disassociated with.
3. Click **Unregister** to continue.  
⇒ The "COSYM Communication Toolbox" is removed from the Simulink library.



**Fig. 3-7:** Dissociation with MATLAB

## 4 Administration

---

### 4.1 Installer Components

---

The following necessary components are installed during installation:

- DotNet4.6.1
- VB6 Components
- Microsoft DirectX9
- Visual C++ 2015 Update 2 Redistributable (x86)
- Visual C++ 2015 Update 3 Redistributable (x86)
- Visual C++ 2015 Update 2 Redistributable (x64)
- Visual C++ 2013 Redistributable (x86)
- Visual C++ 2010 SP1 (x86) Redistributable Package
- Visual C++ 2010 SP1 (x64) Redistributable Package
- Visual C++ 2019 (x64) Redistributable Package
- BOA ViBA
- SMFEditor
- COSYM-CAR
  - COSYM-CAR
- ParameterizationAssistant
- ESSE
- ETAS License Manager (x86)
- ETAS License Manager (x64)
- EBI Distribution Package x86 v2.25.0.84
- EBI Distribution Package x64 v2.25.0.84
- EBI Integration Package x64 v2.25.0.84
- Experiment Environment V3.9.2
  - LABCAR Parameterization Assistance
  - Experiment Environment
- VNET V3.2.0
  - VNET
- COSYM
  - ASAM XIL
  - MOCACconnector
  - TARGET ATS
  - NETWORK MODEL
  - TOOLS
  - DOCUMENTS

- AUTOMATION
- CAN EDITOR
- APPLICATION
- LUA

The components below will also be installed during COSYM installation under <COSYM Installation path>\COSYM3.2\Software folder.

- 7Zip
- cmake-3.17.1-win64<sup>1.)</sup>
- jacob
- jdk-11.0.9.101-hotspot
- linux\_gnu-7.4.0-linux
- mingw\_gnu-9.1.0-win
- ninja-1.10.0-win
- Perl
- Python37
- swagger
- thirdpartydlls
- zipper\_tool

---

<sup>1.)</sup> The cmake application which is installed with COSYM can be used only for COSYM use case.

## 4.2 Network/Port Configuration

A port is a communication endpoint. It is a logical device that identifies a service or a process. A number is assigned to your sessions and server applications in an IP<sup>1.)</sup> network. Port numbers are standardized by the Internet Assigned Numbers Authority (IANA). A specific network port is identified by its number which is referred to as port numbers, the IP address to which the port is associated with and the type of transport protocol used for communication.

Every accessible server has one or more IP addresses and each of those IP addresses have a large range (0 – 65,535) of ports that can be used. You can utilize the Port numbers between 1024 – 65535 for configuring COSYM\_KARAF. It means that you cannot use the Port numbers between 0–1023 as these are used as system ports.

The ports which is used for COSYM installation is described below:

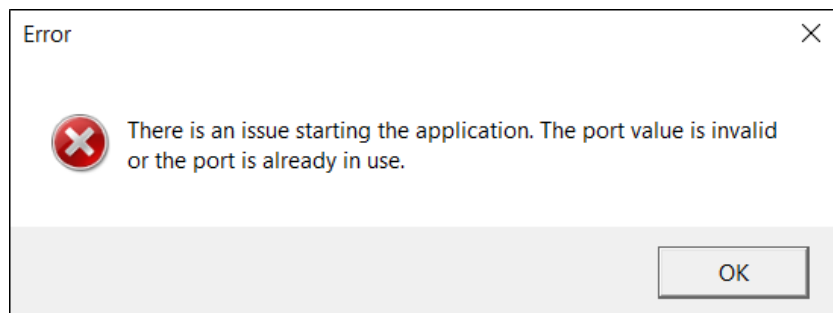
### 4.2.1 Port Used for COSYM

The default Port configured for COSYM\_KARAF server during COSYM installation is port 8181 for HTTP communication.

This configuration is done in the below mentioned file:

```
%COSYM_INSTALLATION_PATH%\COSYM_KARAF\etc\org.ops4j.pax.web.cfg.
```

If the default port is not free, an error message is displayed as shown in the [Fig. 4-1](#). In such a case, you can change the port number as described in the steps below.



**Fig. 4-1:** An error while configuring port

#### To change the port number

1. Go to <COSYM Installation location>\COSYM\_KARAF\etc folder.
2. Open the `org.ops4j.pax.web.cfg` file in any of the text editor.
3. Update the new port value in the field `org.osgi.ser-`

---

<sup>1.)</sup> Internet Protocol

vice.http.port where the default value 8181 is mentioned.

4. Click **Save** to save the org.ops4j.pax.web.cfg file.
5. Restart COSYM.

## 4.3 Firewall Configuration

The inbound rules are configured for COSYM which filters the traffic passing from the network to the local computer which leads to protect the network from malware attacks.

When COSYM is installed in your system, you can view the firewall configuration in the Windows Firewall with Advance Security application.

### To view the configuration

1. Open "Windows Firewall with Advance Security" and click **Inbound Rules** in the left panel.

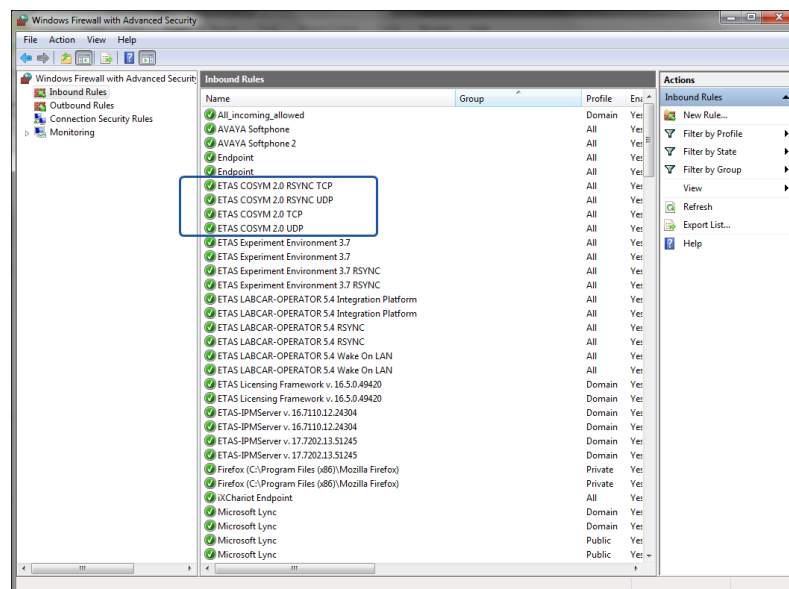


Fig. 4-2: Firewall configuration

## 4.4 Server Security

COSYM can also be accessed through REST APIs exposed by COSYM.

The product is hosted using COSYM server. The server is deployed and hosted on the local system with the port number given by you during installation of the product.

All IP traffic to the hosted COSYM is limited to the local system. The hosted COSYM on the server cannot be accessed outside the local system using the IP address of the system or the port number.



## 4.5 Server Performance

---

The COSYM V3.2.0 is a standalone application. It is deployed on a system and can be accessed or used on that system alone. COSYM can be accessed via Graphical User Interface and also through the REST APIs exposed by COSYM.

## 4.6 Build Information

---

To view the COSYM build information, go to **Control Panel → Programs and features → COSYM 3.2.0.xx** where xx is the build number.

This helps to raise your concerns to the concerned team, if you face any issue in a particular build.

## 5 Licensing the Software

---

To be able to work with an ETAS software product, you require a license. This section contains basic details on ETAS license models, how to get a license, the license file, grace mode, the "License expires soon" window, and borrowing a license.

Details concerning the scope of the licenses and other legal aspects can be found in "Terms and Conditions".

### 5.1 ETAS License Models

---

There are three different license models available for licensing your ETAS software:

#### Machine-Named License, Local

- A license of this type is managed by the user himself/herself.
- As it is linked to a particular PC (MAC address of the Ethernet adapter), it is valid wherever the PC is used.
- When you change your PC, you require a new license.

#### User-Named License, Server-Based

- The licenses (of a department or company) are managed centrally on a server by a designated person.
- The license is linked to the user name with which the user is registered in the network and is available on every PC in the network.
- If the relevant PC is disconnected from the network, the license can be "borrowed."

#### Concurrent (or Floating) License, Server-Based

Most of what mentioned in the user-named license applies to this type of license. The difference is that here several users share a limited number of licenses.

### 5.2 How to get a License

---

If your company has a tool coordinator and server-based license management for ETAS software, contact that person. Otherwise (in case of a machine named license) you obtain your license from the ETAS license portal (the URL is shown on your Entitlement Certificate).

There are three ways of logging into the welcome page:

### Activation ID

Once you have logged in, a specific activation<sup>1.)</sup> is visible and can be managed. The activation ID is shown on your Entitlement Certificate.

### Entitlement ID

All activations of the entitlement<sup>2.)</sup> are visible and can be managed (e.g. for a company with just one entitlement).

### E-mail and password

All activations of the entitlements assigned to the user account are visible and can be managed (e.g. for a tool coordinator responsible for several entitlements). If you need help in the portal, click the **Help** link.

## 5.2.1 What Information is Required?

Information on the hosts must be entered to activate licenses:

- Machine-named license
- The MAC address of the Ethernet adapter to which the license is to be bound is required here.
- User-named license
- Here, you need a server host or a server triad as well as a user name.
- Concurrent (floating) license
- Here, you need a server host or a server triad.



#### Note

If this data changes (e.g. due to changes in the hardware or a change of user), the license must be given a "rehost". This procedure is also described in the portal help file.

- 
- 1.) The activations refer to a specific product, its license conditions, the available number of licenses and other details required for generating a license. Activations are identified uniquely with activation IDs.
  - 2.) An entitlement shows the authorizations you have as a user; it stands for the right to own one or more licenses for a product. It is a kind of rights to use for software from which you can take licenses as you need.

## 5.3 The License File

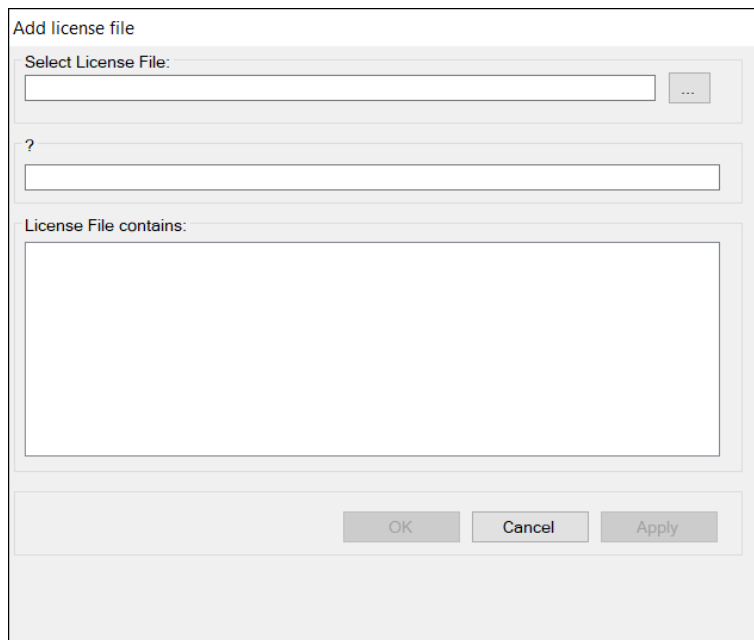
---

The result of your activities is the provision of a file <name>.lic with which you can license your software in the ETAS License Manager.

## 5.4 Adding a License File

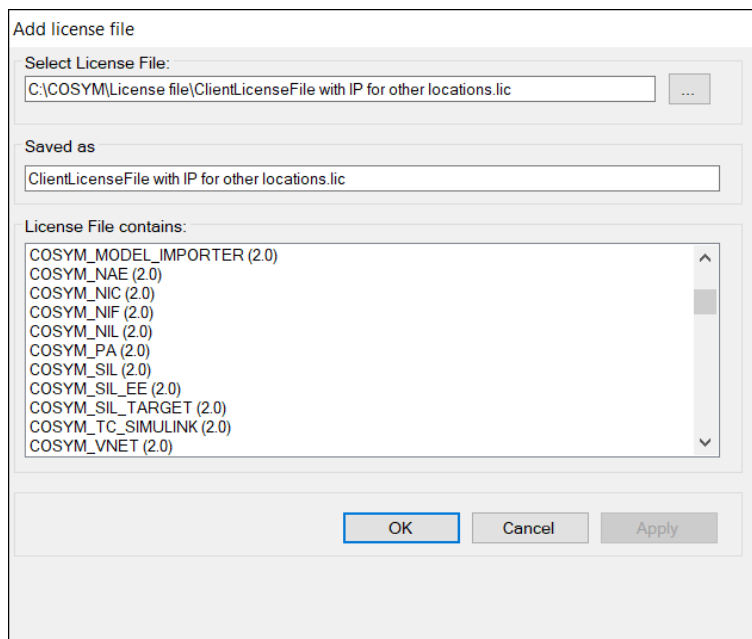
---

1. Open the ETAS License Manager ([Licensing the Software](#)) and select **File** → **Add Licensing File**.
- ⇒ The "Add License File" dialog window opens.



**Fig. 5-1:** Add license file dialog box

2. Next to the "Select License File" field click the ... button.
  3. In the file selection window, select the license file and click **Open**.
- ⇒ The "Install License" dialog window shows information on the selected license.



**Fig. 5-2:** Selection of a license file

### Note

The "Version" column shows the version number of the license, not the version number of the software.

4. Confirm with **OK**.
- ⇒ The license just added is now listed in the ETAS License Manager. A green symbol before the entry shows that the license is valid.

### Note

If the green symbol is not displayed, there might be a problem with the license file or the license relates to another product. Additional information on the ETAS License Manager can be found in the online help of the ETAS License Manager

5. Close the ETAS License Manager.

### To check the license status

1. On the Windows **Start** menu, go to **ETAS** and select **ETAS License Manager**.

The ETAS License Manager contains one entry for each installed product. The symbol at the beginning of the entry and the "Status" column entry indicate whether a valid license has already been obtained or not.

Product	Feature	Status	Feature Version	Source	Expiration Date	Remaining Days
COSYM	COSYM_HIL	Installed	2.0	Server	Permanent	
COSYM	COSYM_NAE	Installed	2.0	Server	Permanent	
COSYM	COSYM_NIC	Installed	2.0	Server	Permanent	
COSYM	COSYM_NIF	Installed	2.0	Server	Permanent	
COSYM	COSYM_NIL	Installed	2.0	Server	Permanent	
COSYM	COSYM_PA	Installed	2.0	Server	Permanent	
COSYM	COSYM_SIL	Installed	2.0	Server	Permanent	
COSYM	COSYM_TC_SIMULINK	Installed	2.0	Server	Permanent	
EBI-V	EBI_V	Installed	1.0	Server	Permanent	
EBI-V_X64	EBI_V_X64	GraceMode	1.0	Local	4/18/2019	3
EHANDBOOK-NAVIGAT	EHANDBOOK_NAVIGATOR	Installed	1.0	Server	Permanent	
EHANDBOOK-NAVIGAT	EHANDBOOK_NAVIGATOR_B	Not Available	1.0	Not Available	Not Available	
Experiment Environment	COSYM_SIL_EE	Installed	2.0	Server	Permanent	
Experiment Environment	EE	Installed	3.0	Server	Permanent	
Experiment Environment	INT_RP_EE	Installed	3.0	Server	Permanent	
Experiment Environment	INT_UCC_LCO_FIL	Installed	3.0	Server	Permanent	
Experiment Environment	INT_VP_EE	Installed	3.0	Server	Permanent	
ISOLAR-EVE	INT_VP_EE	Installed	3.0	Server	Permanent	
Experiment Environment	LCS_LCO_CCI	Installed	5.0	Server	Permanent	
Experiment Environment	LCS_LCO_LCE	Installed	5.0	Server	Permanent	
Experiment Environment	LCS_LCO_LCX	Installed	5.0	Server	Permanent	
ISOLAR-EVE	ISOLAR_EVE	Installed	3.0	Server	Permanent	
ISOLAR-EVE	ISOLAR_EVE_TF	Not Available	3.0	Not Available	Not Available	

Fig. 5-3: ETAS License Manager license list

## 5.5 License Expiry

If your installed license expires or a valid license is not added into the License Manager, then the entry in the License Manager is turned to red and you can no longer operate on COSYM until you add a valid license.

Product	Feature	Status	Feature Version	Source	Expiration Date	Remaining Days
COSYM	COSYM_HIL	Not Available	2.0	Not Available	Not Available	
COSYM	COSYM_NAE	Not Available	2.0	Not Available	Not Available	
COSYM	COSYM_NIC	Not Available	2.0	Not Available	Not Available	
COSYM	COSYM_NIF	Not Available	2.0	Not Available	Not Available	
COSYM	COSYM_NIL	Not Available	2.0	Not Available	Not Available	
COSYM	COSYM_PA	Not Available	2.0	Not Available	Not Available	
COSYM	COSYM_SIL	Not Available	2.0	Not Available	Not Available	
COSYM	COSYM_TC_SIMULINK	Not Available	2.0	Not Available	Not Available	
EBI-V	EBI_V	Not Available	1.0	Not Available	Not Available	
EBI-V_X64	EBI_V_X64	GraceMode	1.0	Local	4/18/2019	3
EHANDBOOK-NAVIGAT	EHANDBOOK_NAVIGATOR	Not Available	1.0	Not Available	Not Available	
EHANDBOOK-NAVIGAT	EHANDBOOK_NAVIGATOR_B	Not Available	1.0	Not Available	Not Available	
Experiment Environment	COSYM_SIL_EE	Not Available	2.0	Not Available	Not Available	
Experiment Environment	EE	Not Available	3.0	Not Available	Not Available	
Experiment Environment	INT_RP_EE	Not Available	3.0	Not Available	Not Available	
Experiment Environment	INT_UCC_LCO_FIL	Not Available	3.0	Not Available	Not Available	
Experiment Environment	INT_VP_EE	Not Available	3.0	Not Available	Not Available	
ISOLAR-EVE	INT_VP_EE	Not Available	3.0	Not Available	Not Available	
Experiment Environment	LCS_LCO_CCI	Not Available	5.0	Not Available	Not Available	
Experiment Environment	LCS_LCO_LCE	Not Available	5.0	Not Available	Not Available	
Experiment Environment	LCS_LCO_LCX	Not Available	5.0	Not Available	Not Available	
ISOLAR-EVE	ISOLAR_EVE	Not Available	3.0	Not Available	Not Available	
ISOLAR-EVE	ISOLAR_EVE_TF	Not Available	3.0	Not Available	Not Available	

Fig. 5-4: Unavailability of a valid license

In such a case, contact ETAS Sales ("[Contact Information](#)" on page 59) for a valid license and add it into the ETAS License Manager.

## 5.6 Borrowing a License

The borrowing mechanism makes it possible to work offline even when using a server-based license (i.e. without being connected to the license server).

### Note

You can only borrow a license if a server-based license is being used!

#### To borrow a license

1. Make sure the ETAS Product that you want to borrow the license is not opened.
2. Select the license you want to borrow in the "License Listing" table of the ETAS License Manager.

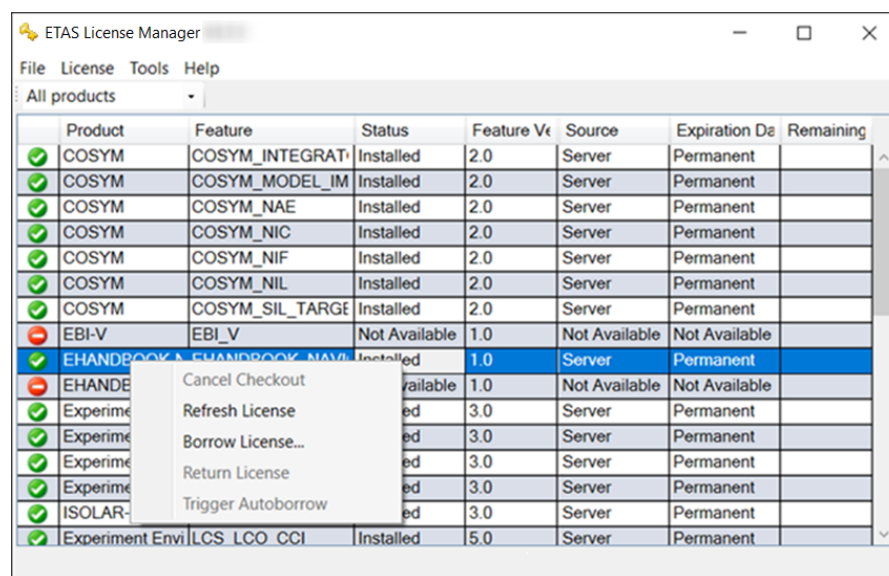


Fig. 5-5: Borrow a license

3. Select **License** → **Borrow License**.
  - ⇒ The "Select Borrow end date" dialog box opens.
4. Select the date until which you want to borrow the license from the calendar displayed and click **OK**.
  - ⇒ The text in the "Source" column of the ETAS License Manager changes from "SERVER" to "BORROW", and the expiration date of the borrowed license is displayed.

	Product	Feature	Status	Feature Ver	Source	Expiration Date	Remaining
✓	COSYM	COSYM_INTEGRAT	Installed	2.0	Server	Permanent	
✓	COSYM	COSYM_MODEL_IM	Installed	2.0	Server	Permanent	
✓	COSYM	COSYM_NAE	Installed	2.0	Server	Permanent	
✓	COSYM	COSYM_NIC	Installed	2.0	Server	Permanent	
✓	COSYM	COSYM_NIF	Installed	2.0	Server	Permanent	
✓	COSYM	COSYM_NIL	Installed	2.0	Server	Permanent	
✓	COSYM	COSYM_SIL_TARGET	Installed	2.0	Server	Permanent	
✗	EBI-V	EBI_V	Not Available	1.0	Not Available	Not Available	
⚠	EHANDBOOK-N	EHANDBOOK_NAVI	Installed	1.0	Borrow	9/30/2018	
✗	EHANDBOOK-N	EHANDBOOK_NAVI	Not Available	1.0	Not Available	Not Available	
✓	Experiment Envi	EE	Installed	3.0	Server	Permanent	
✓	Experiment Envi	INT_RP_EE	Not Available	3.0	Server	Permanent	
✓	Experiment Envi	INT_UCC_LCO_FIL	Installed	3.0	Server	Permanent	
✓	Experiment Envi	INT_VP_EE	Installed	3.0	Server	Permanent	
✓	ISOLAR-EVE	INT_VP_EE	Installed	3.0	Server	Permanent	
✓	Experiment Envi	LCS_LCO_CCI	Installed	5.0	Server	Permanent	

**Fig. 5-6:** Borrowed licenses

You can now use the relevant ETAS software offline until the expiration date of the borrowed license has been reached.

If you want to use the ETAS software longer than you had originally planned, you can borrow the license again. If you stop using the ETAS software earlier than planned, you can return the license to the license server early (**License** → **Return License Early**). A borrowed license can be returned only to the person from whom you have borrowed it; it cannot be returned to any other person.



## 5.7 COSYM Licenses

---

### 5.7.1 Licenses to Use COSYM

License name	Description
COSYM_SIL	Starts COSYM which uses COSYM SiL use case. It enables the integration and configuration of C code, FMU, and MATLAB®/Simulink® models for simulation on a Windows PC.
COSYM_TC_SIMULINK	To use the tool coupling feature of simulink model in COSYM. It enables co-simulation between models in COSYM and models in MATLAB®/Simulink®. Generated code is not required from MATLAB®/Simulink®, since the MATLAB®/Simulink® models are executed in their original environment.
COSYM_PA	To use the parameter assistant feature. It helps with the parameterization of models by enabling a self-definable arrangement and grouping of parameters across the models of a system. This allows application-specific views to be generated that make parameterization easier.
COSYM_SIL_EE	To use the SiL features in ETAS EE. It is possible to perform simulations and experiments based on the integrated model.
COSYM_VNET	To use the VNET feature. COSYM VNET (Virtual Networks) enables the simulation of a CAN bus.
COSYM_XCP	To use the XCP feature. COSYM XCP helps to generate the A2L files.
COSYM_CAR	To use the COSYM-CAR. Additionally, it is necessary to have COSYM_NIC license to use COSYM-CAR. COSYM-CAR supports to view and complete network module configurations for restbus simulations.

## 5.7.2 Licenses to Use Editors


License name	Description
COSYM_NAE	To use Automotive Ethernet. COSYM NAE (Network Integration Automotive Ethernet) is used for configuring and carrying out tests that require a rest-bus simulation with Automotive Ethernet.
COSYM_NIC	To use CAN editor/CAN FD. COSYM NIC (Network Integration CAN) is used for configuring and carrying out tests that require a rest-bus simulation with CAN.

## 6 Launching COSYM

---

Once COSYM is installed in your system, you can start COSYM as given below.

### To launch COSYM

1. Perform one of the following steps:
  - Go to **Desktop** and then double-click .  
<Or>
  - In Windows 7 systems, go to **Start** menu → **All Programs** → **ETAS COSYM** and then click **COSYM V3.2.0**.  
<Or>
  - In Windows 10 systems, go to **Windows** icon → **ETAS** → **ETAS COSYM** and then click **COSYM V3.2.0**.
2. Read the "ETAS Safety Advice" document and click **Acknowledged**.

⇒ Splash screen is displayed as shown in the [Fig. 6-1](#).



**Fig. 6-1:** Launching COSYM

⇒ Once COSYM is launched, COSYM project screen is displayed as shown in the [Fig. 6-2](#).

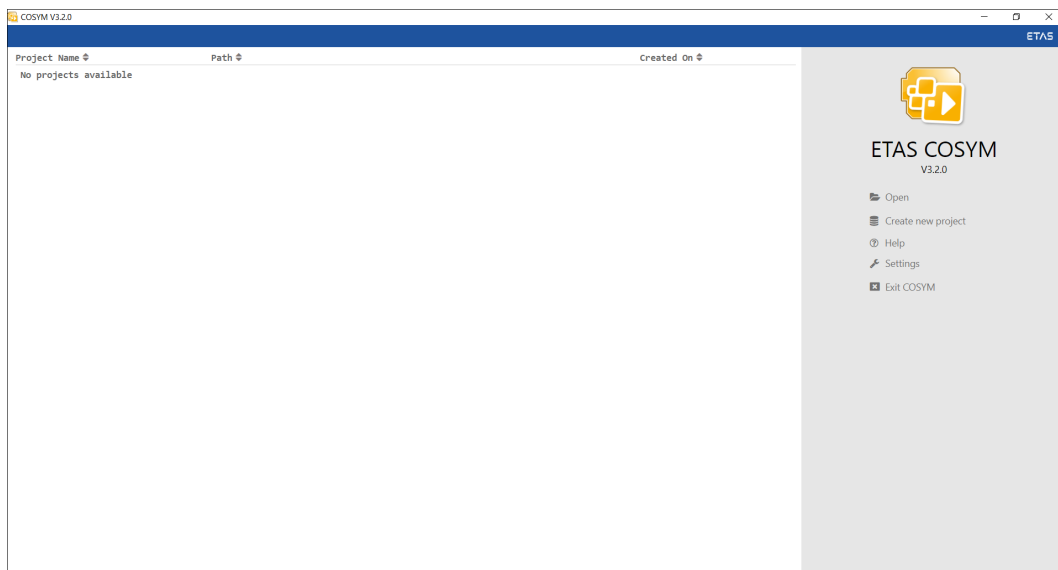


Fig. 6-2: COSYM project screen

## 6.1 Manuals and Tutorials

Go to **Start** menu → **All Programs** → **ETAS COSYM** → **Manuals and Tutorials** to view the User documents which are listed below.

- COSYM\_V3.2.0\_Release\_Notes.pdf
- COSYM\_V3.2.0\_vNET\_Guide.pdf
- COSYM\_V3.2.0\_Getting\_Started\_Guide.pdf
- COSYM\_V3.2.0\_Software\_Compatibility\_List.pdf
- COSYM\_V3.2.0\_User\_Guide.pdf
- COSYM\_V3.2.0\_Tutorials.pdf
- COSYM-CAR\_V3.2.0\_User\_Guide.pdf
- ETAS\_Experiment\_Environment.pdf
- SiL\_Python\_API\_Guide.pdf
- Editors folder contains:
  - CAN\_Editor\_User\_Guide.pdf
  - Network\_Model\_User\_Guide.pdf

### 6.1.1 References

The documents listed below are also available in the COSYM installation location.

- ASAM-XIL Documentation  
<COSYM Installation Directory>\ASAMXil\Manual\ETAS\_XILAPI.chm
- CAN Editor API Documentation  
<COSYM Installation Directory>\CANStandaloneEditor\Manual\CAN\_API.chm

## 6.2 COSYM Tools

---

Go to **Start** menu → **All programs** → **ETAS COSYM** → **COSYM Tools** to view the COSYM tools which are listed below:

- `MATLABassociation.exe`  
Refer to "[Associating COSYM with MATLAB®](#)" on page 27 for more details.
- `MATLABdissociation.exe`  
Refer "[Dissociating with MATLAB®](#)" on page 27 for more details.

## 6.3 COSYM Log Files

---

If you encounter an anomaly or error in the functioning of COSYM, refer to the log files available in the folder below.

### To view the installation log file

1. Go to `C:\ETAS\LogFiles\COSYM\Logs\` folder and view the installation logs at `CosymInstall_<Installation Date & Time>.log` file.

### To view the log files

1. Go to `<Installation Directory>\COSYM_KARAF\data\log` folder.

The log files available in COSYM are listed below:



- **cosym.log**  
This is an "application log" file which stores all information pertaining to COSYM functioning.
- **karaf.log**  
This log file is a "server log" file which contains details related to COSYM\_KARAF Server.
- **appwrapper.log**  
This log file is an "application log" file which contains details about the COSYM wrapper.
- **<network\_module name>.network.log**  
This log file contains the details of the corresponding network model.
- **<CANStandalone>.logfile.log**  
This log file will be generated only when you create/modify a CAN model.

## 7 Exiting COSYM

---

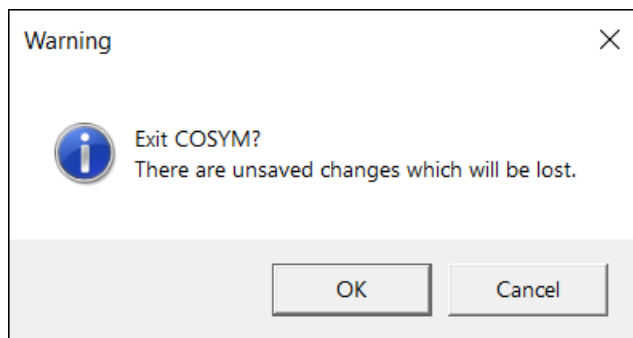
This feature helps to exit COSYM.

### To exit COSYM

1. Perform one of the step below to exit COSYM.
    - Click  **Exit COSYM** on the project screen.
    - <Or>
    - Go to **File** menu → **Exit COSYM**.
    - <Or>
    - Click  icon on the top-right corner of COSYM.
- ⇒ It closes COSYM.

A warning message is displayed in the following cases as mentioned below:


- Unsaved changes in COSYM
- Any of the hardware editor is opened through COSYM



**Fig. 7-1:** Warning window

2. Click **OK** to exit the COSYM without saving the modified changes.
    - ⇒ It closes COSYM.
  3. Click **Cancel** to cancel the exit operation and perform the following:
    - Save the unsaved changes in COSYM.
    - <Or/and>
    - Save the modified changes in the editor and close it.
- ⇒ It saves the modified changes in the COSYM/hardware editor.  
Now, it is safe to exit the COSYM.

### Note

In case you are unable to close COSYM using  icon, then close it forcefully through the task manager.


## 8 Upgrading COSYM

---

You have to uninstall any previous version of COSYM before installing a new version. Overlapping of installations is not possible.

Refer to "[System Requirements](#)" on [page 9](#) for more details on necessary hardware and software components required for installation.

### To upgrade COSYM

1. Click  icon to close COSYM.
2. Uninstall COSYM Package "[Uninstalling](#)" on [page 49](#) on how to uninstall the COSYM package.
3. Install latest version of COSYM. "[Installing COSYM](#)" on [page 13](#) for more details.

### 8.1 Upgrading COSYM Without Uninstalling the Previous Version

---

If you try to upgrade COSYM without uninstalling the previous version of COSYM, then follow the steps below to upgrade it.

Refer to "[System Requirements](#)" on [page 9](#) for more details on necessary hardware and software components required for installation.

#### **Note**

If any file inside COSYM is opened, then uninstallation cannot be performed. To uninstall, close all the opened files.

### To upgrade COSYM

1. Insert the installation DVD into the drive of your computer.  
⇒ The "Welcome" dialog box is displayed.



**Fig. 8-1:** Welcome window

2. Click **Next**.  
⇒ An "Uninstall previous products" dialog box is displayed.
3. Click **Uninstall now**.  
⇒ Uninstallation process is initiated. Once it uninstalls all the installed packages, you will get the message that `uninstallation succeeded`.
4. Click **Next**.  
⇒ An "End user license agreement" dialog box is displayed. Now continue the installation process as described in the "Installation Steps" section [on page 14](#).



## 9 Uninstalling

---

You should have administrator rights to uninstall. You can uninstall COSYM from the path below:

### Note

If any file inside COSYM is opened, then uninstallation cannot be performed. To uninstall, close all the opened files.

#### To uninstall COSYM

1. Close COSYM.
2. Go to **Control Panel** on windows **Start** menu.
3. Click **Uninstall a program** in **Programs and Features**.  
⇒ The "Programs and Features" window is displayed.
4. Select the COSYM version to uninstall click **Uninstall**.  
⇒ The "Welcome" dialog box is displayed.
5. Click **Next** to proceed with the uninstallation process.  
⇒ The "Ready to uninstall" dialog box is displayed.

### Note

By default, all the available components are selected for the uninstallation process. You can make the necessary changes.

6. Click **Uninstall**.  
⇒ Uninstallation process is initiated.

### Note

When you uninstall COSYM, the demo data/documents will also be deleted from the specified directory.

7. Click **Finish** to complete the process.  
⇒ The COSYM is uninstalled from the computer.

#### To uninstall COSYM-CAR

The same steps mentioned above applies for uninstalling COSYM-CAR as well. While selecting the product name on the Step 4 above, select COSYM-CAR instead of COSYM .

## 10 Troubleshooting

---

This chapter describes some useful troubleshooting hints which might be helpful while working with COSYM.

If you face any issues while installing COSYM, refer to `C:\ETAS\LogFiles\COSYM\Logs\CosymInstall_<Installation Date & Time>.log` file for more details.

### 10.1 Error During Installation

---

If you get an error while installing COSYM due to "DirectX9" installation failure, then the error could be caused by the corrupted .NET framework on your system.

#### To fix the issue

1. Uninstall ".NET framework 4.6.1" application and re-install the same.
2. Install COSYM.

### 10.2 Error While Installing Or Uninstalling

---

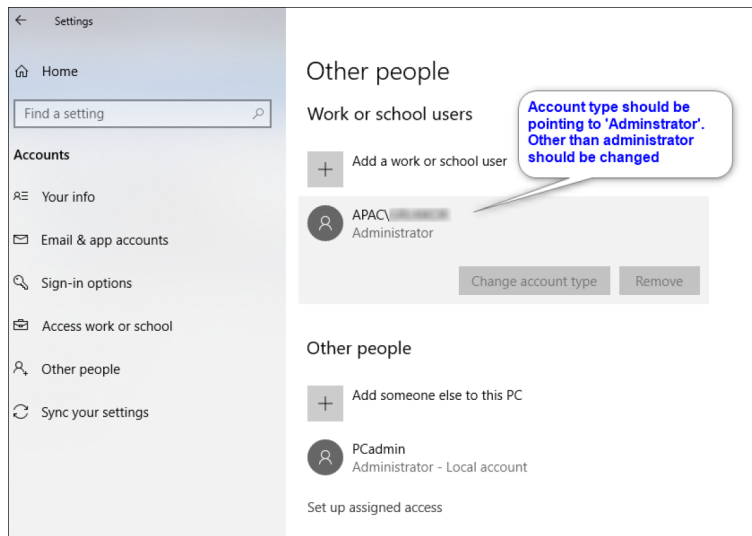
If you get an error while installing or uninstalling COSYM as shown in the [Fig. 10-1](#).



**Fig. 10-1:** Uninstallation error

It is due to that you do not have administrator rights in your system.

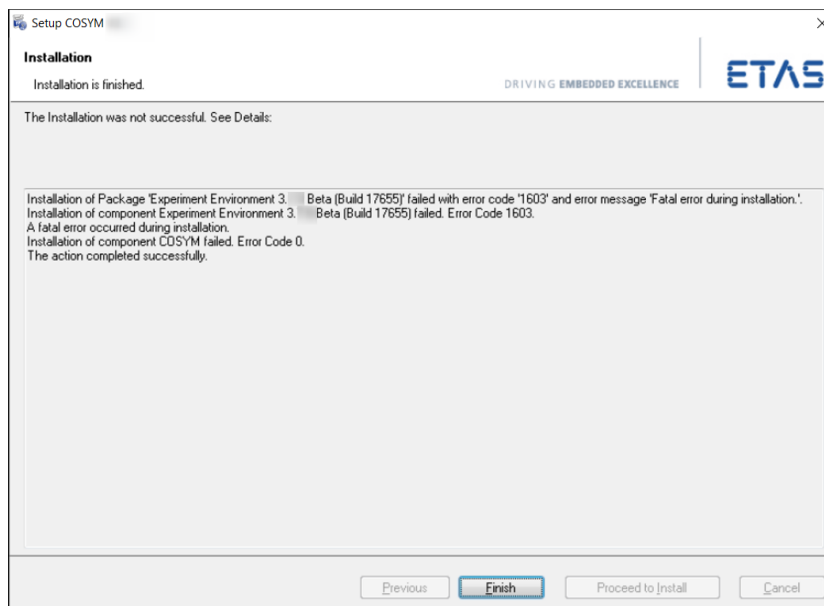
In such a case, change the 'local' to 'admin' account type.



**Fig. 10-2:** Settings

### 10.3 Failing COSYM Installation when ETAS EE Installation Starts

On encountering an error during COSYM installation which is shown in the [Fig. 10-3](#).



**Fig. 10-3:** Failure of COSYM installation

Due to this error, COSYM cannot be installed on the same machine without re-tying it.

This issue happens when the VC++ Redistributable file(s) is(are) corrupted.

Repair the VC++ Redistributables manually.

### To fix the issue

1. Go to **Control Panel** → **Programs** → **Programs and Features**.
2. Select "Microsoft VC++ Redistributable" and right-click.  
⇒ A context menu is displayed.
3. Click **Change**.  
⇒ "Microsoft C++ Redistributable Modify Setup" dialog box is displayed.
4. Click **Repair**.
5. Click **Close** once the repair process is successful.
6. Restart the system.
7. Re-install COSYM.

## 10.4 Port Error While Launching

---

You might get this error in the following scenarios.

### Scenario 1

If you are unable to launch COSYM after successful installation of COSYM as the port configured during installation is used by another application.

In such a case, change the configured port number of COSYM. Refer to "[Port Used for COSYM](#)" on page 31 on how to configure the port.

### Scenario 2

Whenever COSYM starts, both PA and COSYM server java processes start. Sometimes, even if you close COSYM, one or both java processes could still be running. Hence you might get the "port is in use" error.

In such a case, go to **Task Manager** in your computer by right-clicking on the toolbar and search for `OpenJDK Platform binary.exe`. Then, right-click on the same and click **End task**.

## 10.5 Getting a Blank Screen After Launching COSYM

---

In general, when you start the COSYM, `cosym.exe` and `OpenJDK Platform binary.exe` should be available in the Task Manager.

In case, Task Manager contains only `cosym.exe` without the `OpenJDK Platform binary.exe` in the Task Manager after starting the COSYM, then you get a **blank** screen.

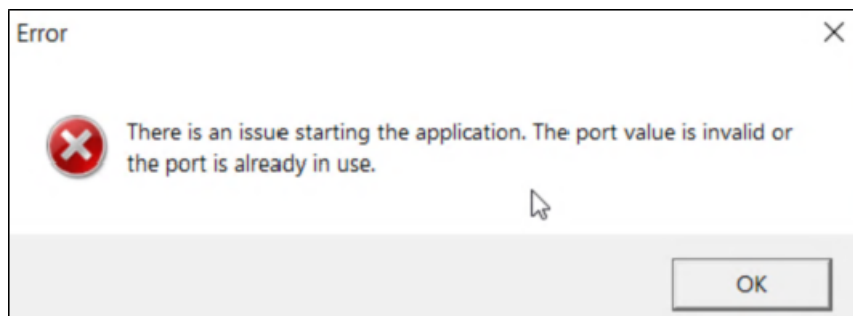
In such a case, you need to re-install ("[Uninstalling](#)" on page 49 and "[Installing COSYM](#)" on page 13) COSYM.

## 10.6 Getting White Background After Launching COSYM

Sometimes, you might get a white background after launching COSYM or invalid port error as shown in the [Fig. 10-4](#) and [Fig. 10-5](#).



**Fig. 10-4:** A blank screen after launching COSYM



**Fig. 10-5:** Invalid port error

This could be because of the following reasons:

- The executable file of CEF wrapper code (<COSYM Installation location> \Shortcuts\executable\CefSharp.BrowserSubprocess.exe) is missing.
- The 'White screen' and the 'Port usage' issues are interlinked. The CEF Wrapper code is invoked first to initialize the port required for COSYM KARAF and launch of COSYM.
- The missing executable is because of the anti-virus which was blocking the executable as it was listed as a Trojan. So this \*.exe file was removed during scanning.

### To resolve the issue

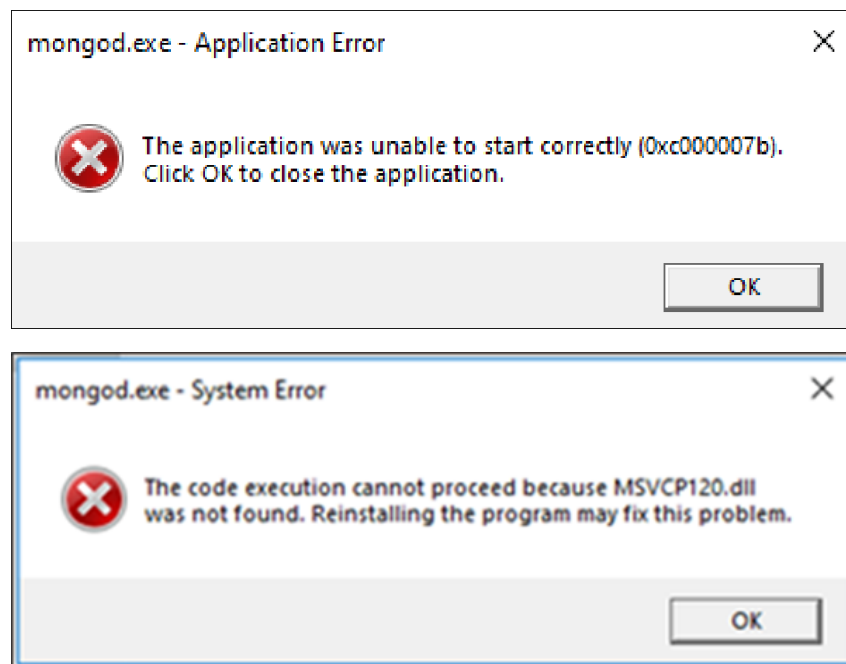
1. Check whether your system is restricted to download and save it to your system.
2. The removed `CefSharp.BrowserSubprocess.exe` file needs to be placed explicitly in the location, `<COSYM Installation location>\Shortcuts\executable\`.
3. Add the exemption in anti-virus settings for this particular executable file.  
⇒ This file will be exempted from the anti-virus.

By adding the exemption in the anti-virus settings for this particular executable file, the issue will be resolved.

## 10.7 Application Error

If you get an error as shown in the [Fig. 10-6](#), it is necessary to follow the steps below to fix the issue.

This error might occur when COSYM is launched from clean virtual machine. It is also due to missing or corrupted `MSVCP120.dll` file in the system.



**Fig. 10-6:** An application error

In such a case, re-install the Visual Studio C++ redistributables for the `MSVCP120.dll` file from the location below. To perform this operation, you must have administrator privileges.

### To re-install the Visual Studio C++ redistributables

1. Go to the location, "COSYM\_DVD\DATA\COSYM\_Installation\Packages\3rdParty\vc redistrib\_2013\_x64" and "COSYM\_DVD\DATA\COSYM\_Installation\Packages\3rdParty\vc redistrib\_2013\_x86\_1".
2. Double-click on \* .exe files to run.
3. Install/repair the Visual Studio C++ redistributable version 2013 x64 and x86.

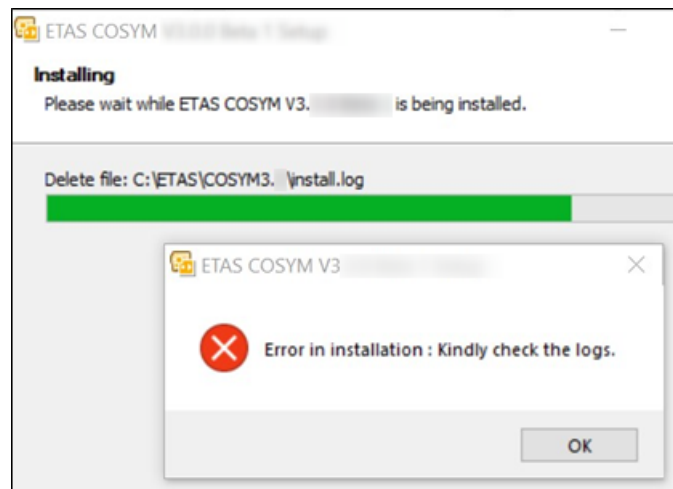
#### **Note**

After installation of these packages, it is necessary to restart your system.

If the problem still persists, then exit and restart the ETAS Simulation Deployment Service.

## 10.8 Installation Failure due to COSYM\_SIM Module

You might get an error as shown in the [Fig. 10-7](#) where you asked to refer to the COSYM Installation log files ([page 45](#)).



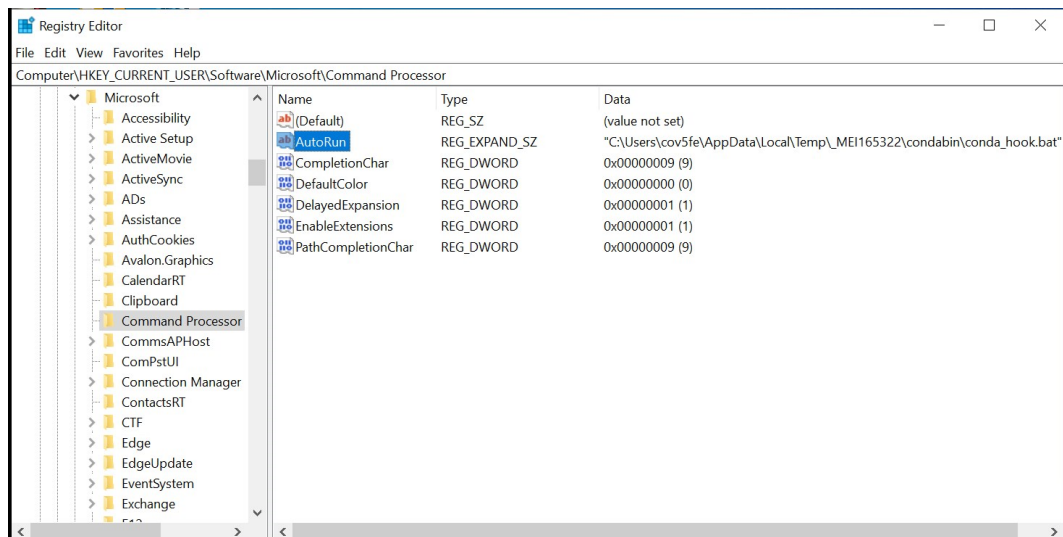
**Fig. 10-7:** Error while installing

It is mentioned in the log file as "Installation issue in COSYM\_SIM" as shown in the [Fig. 10-8](#).

```
63548 File: overwriteflag=1, allowskipfilesflag=2,
name="C:\Users\...\AppData\Local\Temp\nsiCC1F.tmp\nsExec.dll"
63549 File: wrote 7168 to "C:\Users\...\AppData\Local\Temp\nsiCC1F.tmp\nsExec.dll"
63550 settings logging to 1
63551 logging set to 1
63552 Issue while installing COSYM_SIM with error code 1
63553 CopyFiles
"C:\ETAS\COSYM3.0\install.log"->"C:\ETAS\LogFiles\COSYM\Logs\CosymInstall_2021-09-14-18-54-16.log"
63554
```

**Fig. 10-8:** Error snippet from the log file

This issue could be because of the registry – “HKCU\Software\Microsoft\Command Processor”. The AutoRun key has values (in this scenario, "Conda" installation is blocking the installation of COSYM as shown in the Fig. 10-9).



**Fig. 10-9:** Conda installation is blocking COSYM installation

To overcome this issue, follow the steps below:

#### To reset the registry

1. Go to "Registry Editor" from **Windows Start** menu.
2. Navigate to Computer\HKEY\_CURRENT\_USER\SOFTWARE\Microsoft.
3. Right-click on the registry, "Command Processor".  
⇒ A context menu is displayed.
4. Click **Export** to keep this as a backup.
5. Click **Delete** to delete the registry.



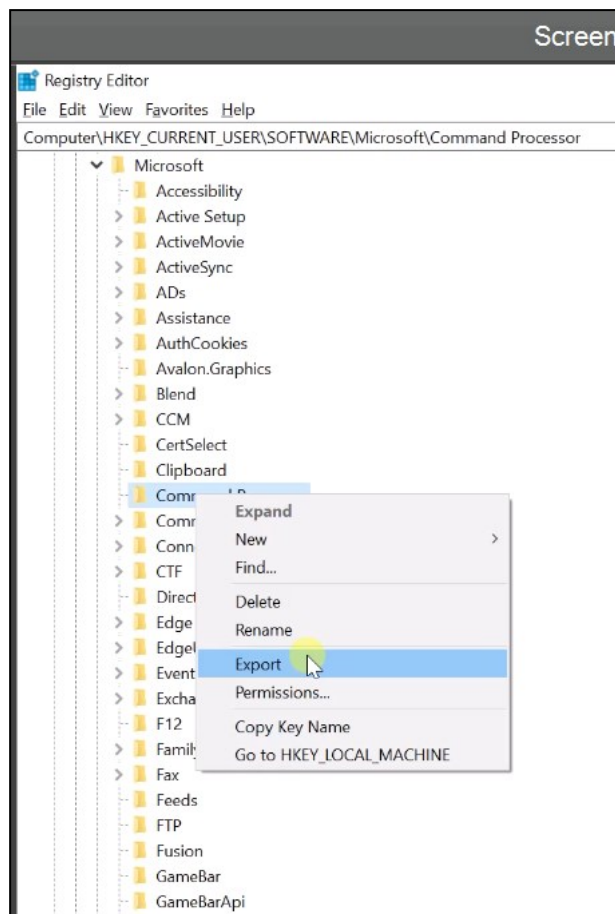


Fig. 10-10: Export/Delete the registry

6. Restart PC.
  7. Install COSYM.
  8. Once COSYM is installed, right-click on the exported registry file that was previously backed up and click **Merge**.
- ⇒ This will reset back the registry. Ensure that it is reset back to the original condition.

## 11 Restrictions

---

This chapter describes the limitations of COSYM V3.2.0.

### 11.1 Parallel Installation

---

COSYM V3.2.0 cannot be installed in parallel with the lower version of COSYM on the same PC. Uninstall, if any version of COSYM installed in your system before installing V3.2.0.

## 12 **Contact Information**

---

### **ETAS Headquarter**

ETAS GmbH

Borsigstraße 24

Phone: +49 711 3423-0

70469 Stuttgart

Fax: +49 711 3423-2106

Germany

Internet: [www.etas.com](http://www.etas.com)

### **ETAS Subsidiaries and Technical Support**

For details of your local sales office as well as your local technical support team and product hotlines, take a look at the ETAS website:

ETAS subsidiaries                      Internet: [www.etas.com/en/contact.php](http://www.etas.com/en/contact.php)

ETAS technical support:              Internet: [www.etas.com/en/hotlines.php](http://www.etas.com/en/hotlines.php)

## Index

---

### C

contact information .....59

### E

ETAS

    contact information ..... 59

### G

glossary .....61

### I

Installation .....8

Installation and Administration Guide .....8

Installation Steps ..... 13

### L

Launch COSYM .....43

Licensing the Software ..... 34

Log files .....45

### M

Manuals and Tutorials .....44

### P

Port used for COSYM .....31

### S

Software DVD .....8

System Requirements .....9

### U

Uninstall .....49

Upgrade COSYM .....47

User Privileges .....8

## Glossary

---

### C

#### **COSYM**

Co-simulation of Systems

#### **CPU**

Central Processing Unit

### D

#### **DVD**

Digital Versatile Disc

### E

#### **EULA**

End-User License Agreement

### F

#### **FMI**

Functional Mockup Interface

#### **FMU**

Model is converted to ".fmu" file with the help of importer. This ".fmu" file is called as Functional Mockup Unit (FMU).

### G

#### **GB**

Giga Byte

#### **GHz**

Giga Hertz

### I

#### **ID**

Identification String

#### **IP**

Internet Protocol

### P

#### **PC**

Personal Computer (Desktop or Laptop)

### R

#### **RAM**

Random Access Memory

**REST**

REpresentational State Transfer

**ROM**

Read Only Memory

**U****URI**

Uniform Resource Identifier

**URL**

Uniform Resource Locator

## Figures

---

Fig. 3-1: Welcome window .....	14
Fig. 3-4: MATLAB® versions .....	17
Fig. 3-5: Welcome window .....	25
Fig. 3-6: Ready to install window .....	26
Fig. 4-1: An error while configuring port .....	31
Fig. 4-2: Firewall configuration .....	32
Fig. 5-3: ETAS License Manager license list .....	38
Fig. 5-4: Unavailability of a valid license .....	38
Fig. 5-5: Borrow a license .....	39
Fig. 5-6: Borrowed licenses .....	40
Fig. 6-2: COSYM project screen .....	44
Fig. 7-1: Warning window .....	46
Fig. 8-1: Welcome window .....	48
Fig. 10-1: Uninstallation error .....	50
Fig. 10-2: Settings .....	51
Fig. 10-3: Failure of COSYM installation .....	51
Fig. 10-4: A blank screen after launching COSYM .....	53
Fig. 10-5: Invalid port error .....	53
Fig. 10-6: An application error .....	54
Fig. 10-7: Error while installing .....	55
Fig. 10-8: Error snippet from the log file .....	55
Fig. 10-9: Conda installation is blocking COSYM installation .....	56
Fig. 10-10: Export/Delete the registry .....	57