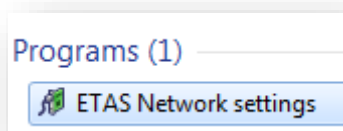


ETAS Network settings tool - Is there a user manual?

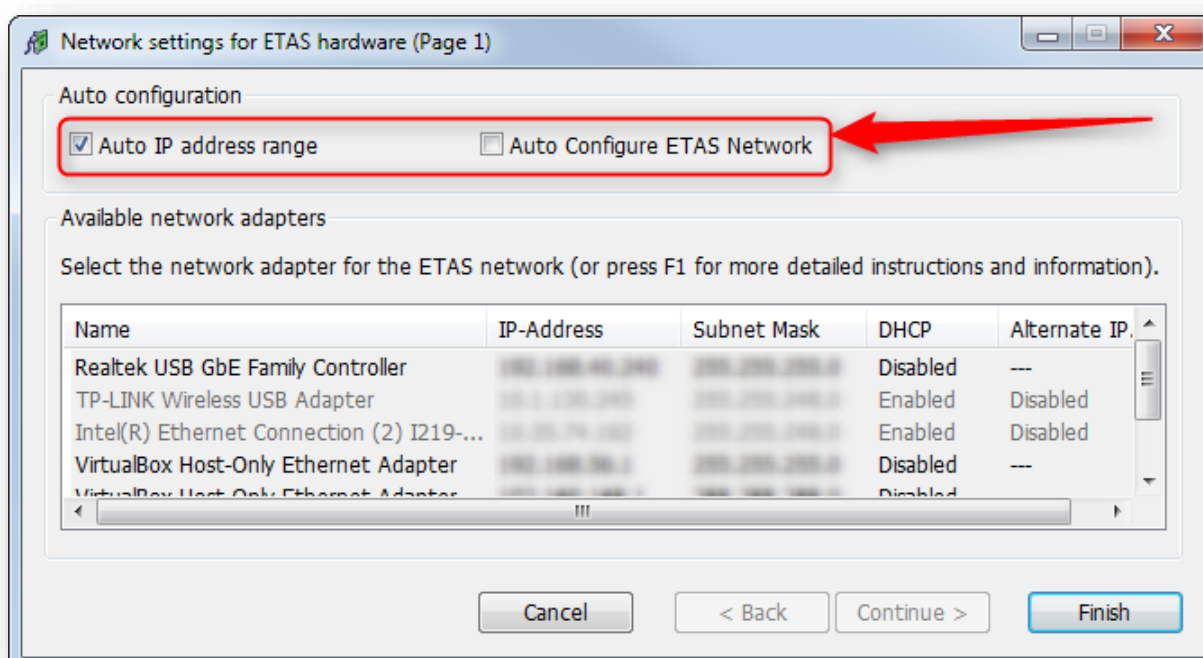


Question

- Does any user manual for **ETAS Network settings** tool exist?



- I would like gain knowledge in scope of **Network settings for ETAS hardware**
 - Specially different behaviour between:
 - Auto IP address range**
 - Auto Configure ETAS Network**

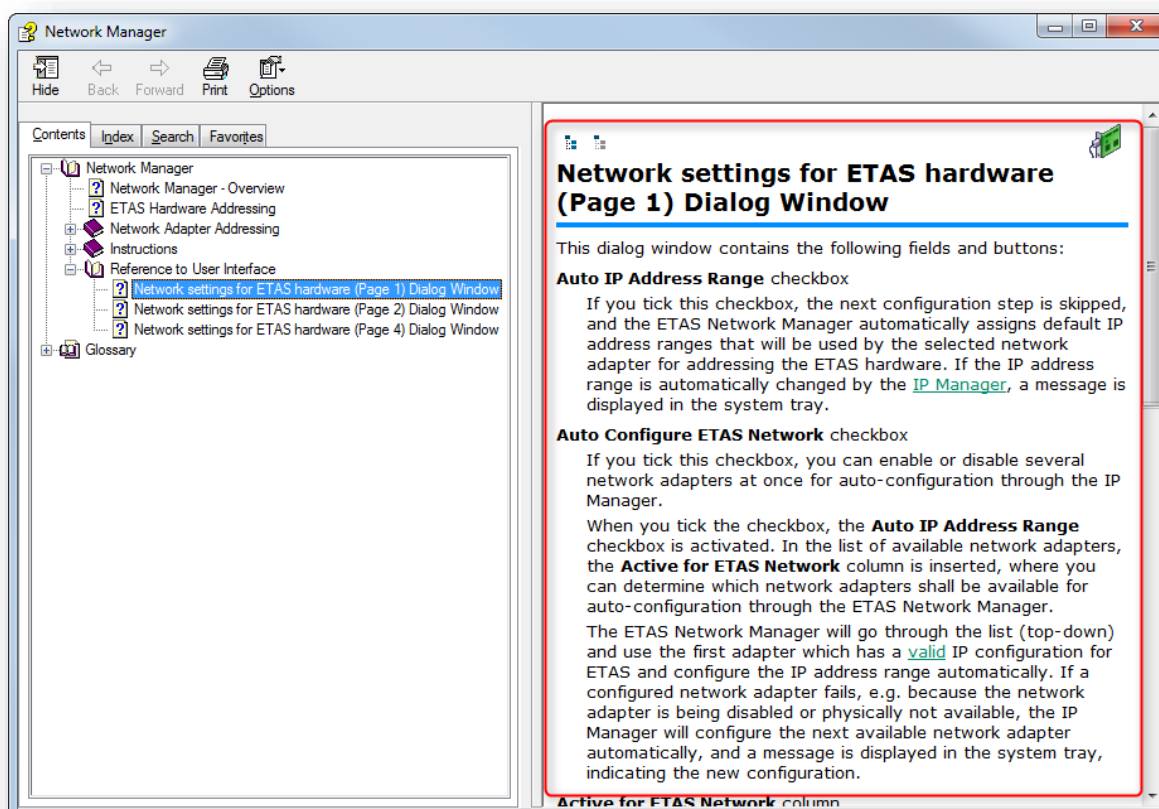


- In case that I want to set it up manually why it doesn't allow me to set custom start address that will match my common network settings?



Answer

- Hit **F1** key
 - You can access the online help for the ETAS Network Manager by hitting the **F1** key once the tool is opened.
 - Here you will find the description for all of its features.
- For example:

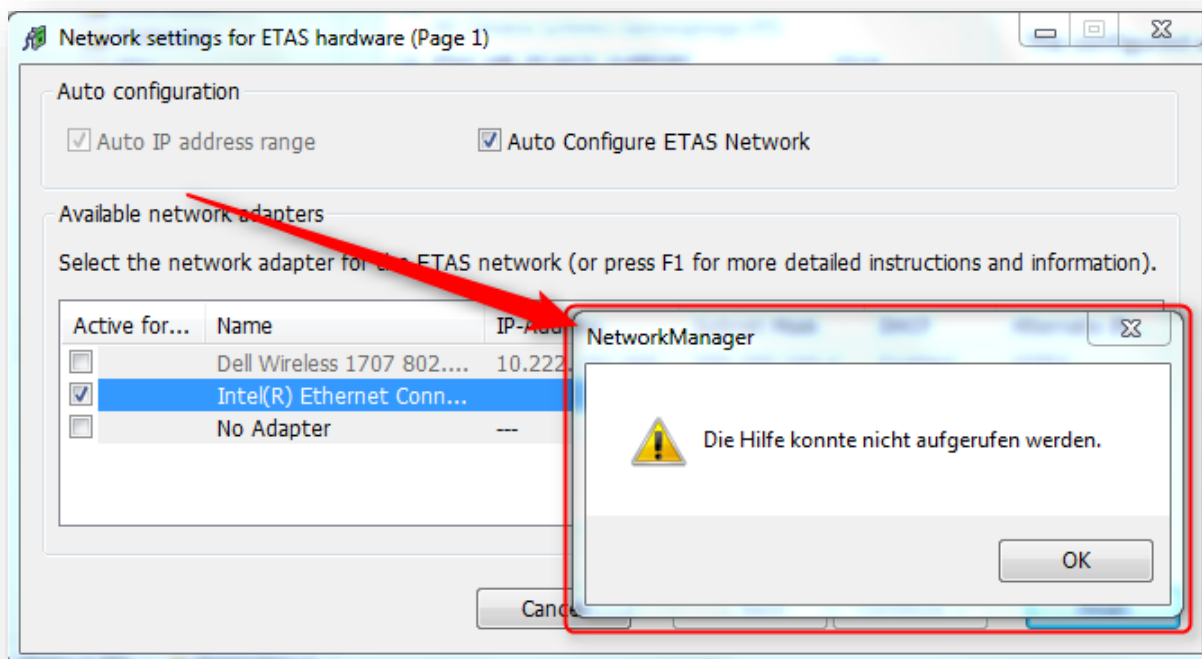




Additional information

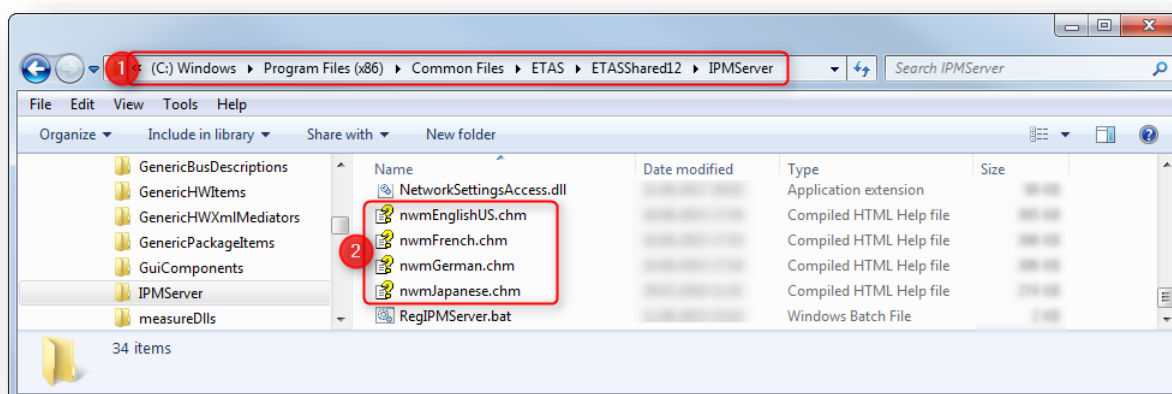
In case there appears an **error message** when you hit F1 key:

- *Die Hilfe konnte nicht aufgerufen werden*



- Check the files in the following directory:

C:\Program Files (x86)\Common Files\ETAS\ETASShared12\IPMServer





Do you still have questions?

- You will find **further FAQ articles** on the ETAS homepage: www.etas.com/en/faq
- **Movies** corresponding to FAQ articles can be found on the [ETAS YouTube channel](#)
- Please feel free to contact our Support Center, if you have further questions.
- Here you can find all information: <http://www.etas.com/en/hotlines.php>

This information (here referred to as „FAQ“) is provided without any (express or implied) warranty, guarantee or commitment regarding completeness or accuracy. Except in cases of willful damage, ETAS shall not be liable for losses and damages which may occur or result from the use of this information (including indirect, special or consequential damages).