

# ETAS License Manager 1.8

Features for FlexNet Embedded licenses

Status: Released

## **Copyright**

---

The data in this document may not be altered or amended without special notification from ETAS GmbH. ETAS GmbH undertakes no further obligation in relation to this document. The software described in it can only be used if the customer is in possession of a general license agreement or single license. Using and copying is only allowed in concurrence with the specifications stipulated in the contract.

Under no circumstances may any part of this document be copied, reproduced, transmitted, stored in a retrieval system or translated into another language without the express written permission of ETAS GmbH.

© **Copyright 2022** ETAS GmbH, Stuttgart

The names and designations used in this document are trademarks or brands belonging to the respective owners.

ETAS License Manager V1.8 – LiMa supplemental instructions for FNE R01 EN – 03.2022

## Contents

---

1	Overview .....	4
1.1	Common concepts .....	4
2	FlexNet Embedded in ETAS License Manager .....	5
2.1	Activating a license .....	5
2.1.1	Online Activation.....	5
2.1.2	Offline Activation.....	5
2.2	Returning a license .....	7
2.2.1	Offline Return .....	7
2.4	Migrating FNP licenses to FNE licenses.....	9
2.4.1	Online Migration .....	9
2.4.2	Offline Migration .....	10
3	Contact Information .....	12

# 1 Overview

ETAS is improving its licensing technology by gradually replacing FlexNet Publisher (FNP) based licensing with its successor FlexNet Embedded (FNE). This allows to use modern technology to ensure licensed products can be used and new use cases are possible.

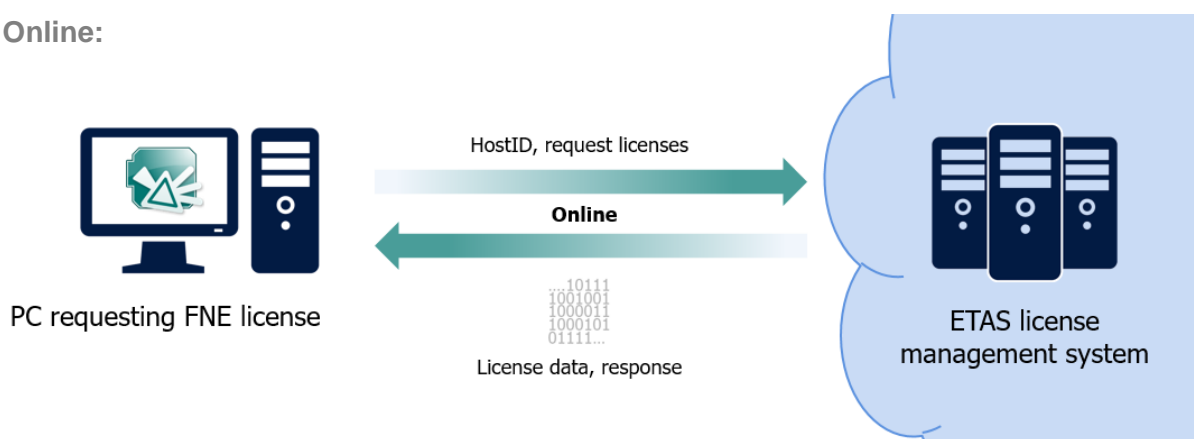
The first step is to replace the technology for machine based licenses. Server based licenses (user or floating) will follow and be described in a later version of this document.

This document describes the features introduced in ETAS License Manager (LiMa) to help with daily handling of machine based FNE licenses and provides assistance for migrating FNP licenses to FNE licenses.

## 1.1 Common concepts

FlexNet Embedded licensing technology allows to manage machine based licenses using online access. The client PC using the licensed software needs to have access to the internet in order to communicate with the ETAS license server. This is the easiest way to activate a license on a computer.

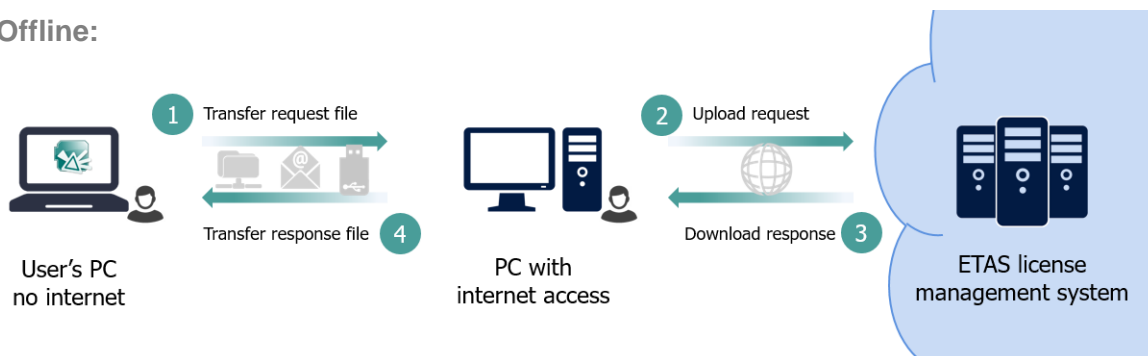
Online:



As there are cases where machines are not connected to the internet (e.g. test benches), another way of license activation needs to be used. In these offline scenarios, files are created that contain the necessary information. These files need to be transferred by other means (e.g. a network share, USB stick etc.) to a machine where it can then be uploaded to the ETAS License & Download Portal manually.

Note: for security reasons, the response from the licensing portal needs to get back to the machine in order to finish the licensing action.

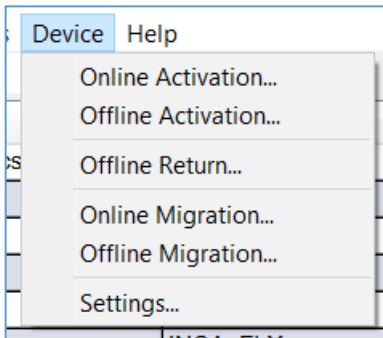
Offline:



## 2 FlexNet Embedded in ETAS License Manager

Currently, all FlexNet Embedded related entries in ETAS License Manager can be found in the “Device” menu.

Please see the tool’s help for detailed information.



### 2.1 Activating a license

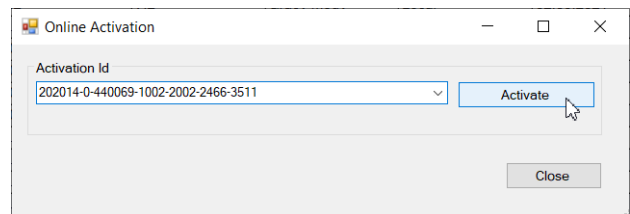
The first time installation of a license is called activation. A license is specific to a tool, its feature, a version and has properties like an expiration date.

An Activation ID is needed to activate a license. It can be found on the entitlement certificate document that you received when buying a license.

#### 2.1.1 Online Activation

You can perform an online activation of a FlexNet embedded license doing the following procedure.

- Go to “Device -> Online Activation...”
- Enter the activation ID for the desired feature into the text field



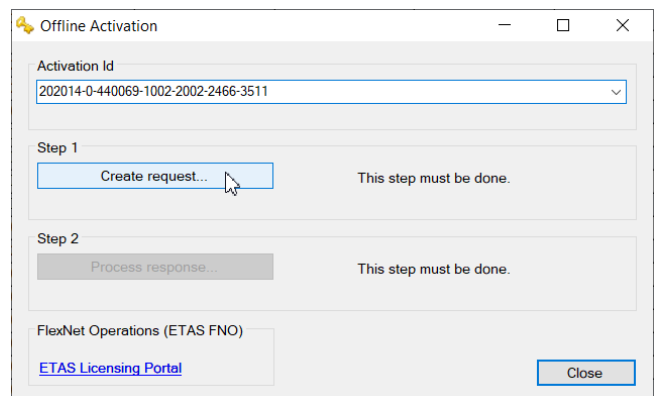
LiMa will then request the corresponding license behind the activation ID, and activate it on the user’s PC.

#### 2.1.2 Offline Activation

In order to activate a FlexNet embedded license on a PC which has no direct internet connection, these steps are necessary:

##### Step1:

- Go to “Device -> Offline Activation...”
- Enter the activation ID for the desired feature into the text field
- Click on “Create request...” to create a file. It will contain the ending “\_activaterequest.bin”



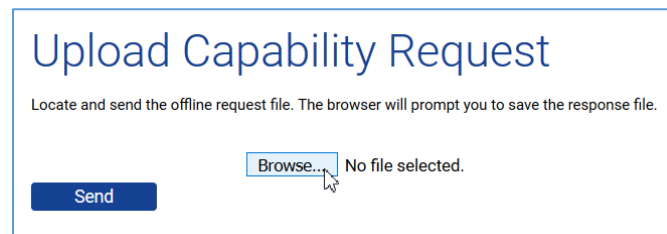
### Get this file to a computer with internet connection.

There:

- Open the ETAS License & Download Portal (<http://www.etas.com/support/licensing>) in your web browser
- Log in with your activation ID
- From the “Devices” menu, select “Upload Capability Request”



- Click “Browse...” and select the file that was created and transferred from the license requesting machine (ending on “\_activaterequest.bin”).



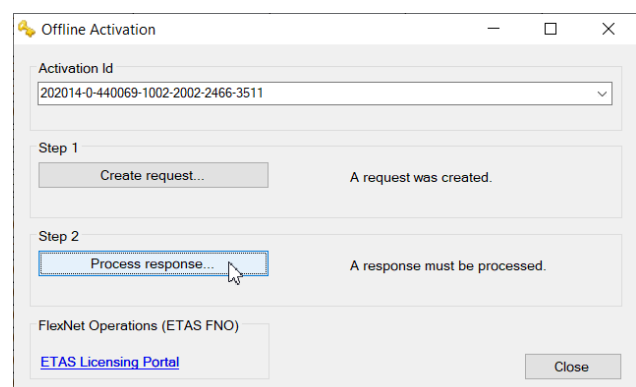
- Click on the “Send” button to process the given file.  
If successful, your browser will ask you to download a new file with a .bin extension
- Copy this file to the computer which had the request for a license

### Step 2:

#### Back on the original computer:

- In the “Offline activation” dialog in LiMa, click on “Process response...” and select the file that was just downloaded from the ETAS License & Download Portal.

You should see a message that confirms that your license was activated.



## 2.2 Returning a license

If a license is no longer needed, it can be returned. The license return request is sent to the license portal and after a positive response, it is removed from the user's machine.

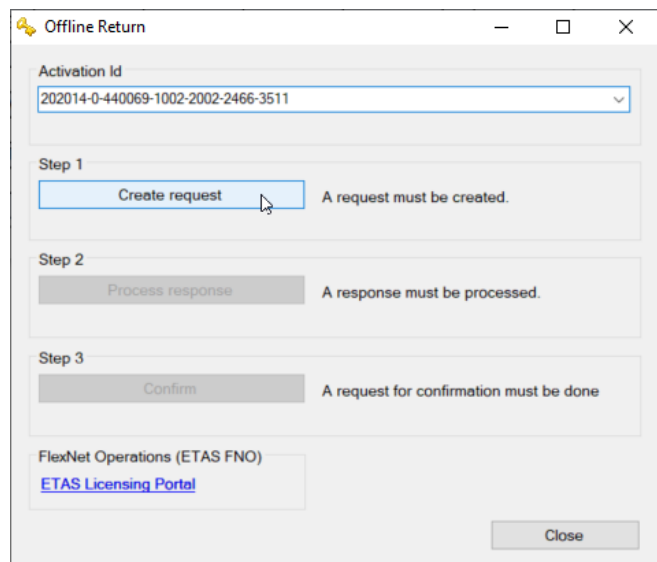
Returning a license is possible only offline.

### 2.2.1 Offline Return

Follow these steps to return a FlexNet Embedded license:

#### Step1:

- Go to "Device -> Offline Return"
- Enter the activation ID for the desired feature into the text field
- Click on "Create request..." to create a file. It will contain the ending "\_returnrequest.bin"

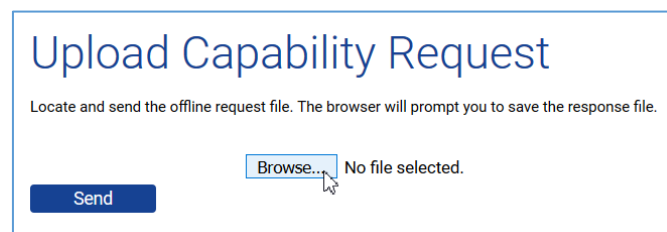


**Copy this file to a computer with internet connection. There:**

- Open the ETAS License & Download Portal (<http://www.etas.com/support/licensing>) in your web browser
- Log in with your activation ID
- From the "Devices" menu, select "Upload Capability Request"



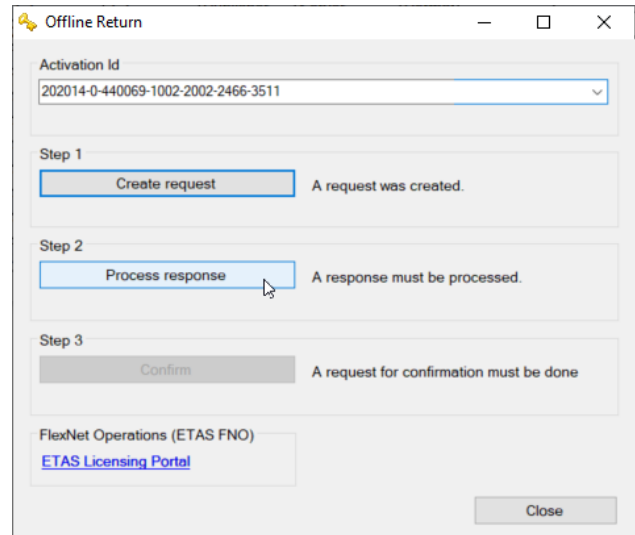
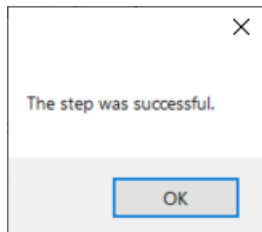
- Click "Browse..." and select the file that was created and transferred from the license requesting machine (ending on "\_returnrequest.bin").



- Click on the "Send" button to process the given file.  
If successful, your browser will ask you to download a new file with a .bin extension
- Bring this file to the computer which had the request for a license

**Step 2:****Back on the original computer:**

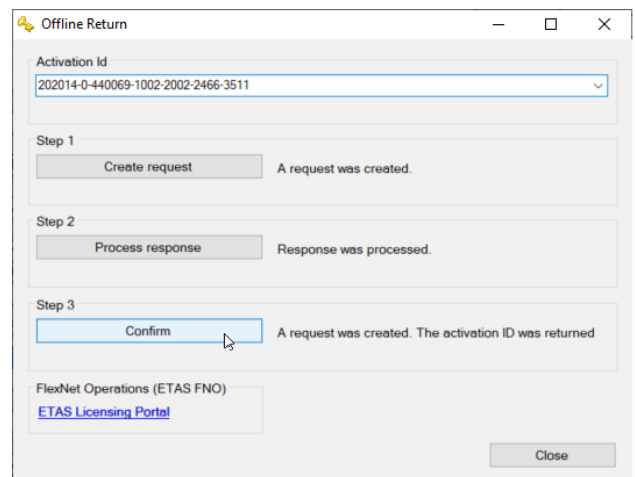
- In the “Offline return” dialog in LiMa, click on “Process response...” and select the file which was just downloaded from the ETAS License & Download Portal.
- LiMa will show a message box:

**Step 3:**

- Click on the “Confirm” button.
- LiMa will create a file ending on “returnconfirm.bin”
- Like already done in step 1, copy the file to another PC with internet access.

**On the PC with internet access:**

- Use “Upload Capability Request” to upload the file that contains the return confirmation. Don’t forget to click on the “Send” button.
- The license portal will ask you to download a new .bin file. You don’t need it.



You’re done. The license is now removed from your PC.



## 2.4 Migrating FNP licenses to FNE licenses

As ETAS introduces FlexNet Embedded, new machine based licenses are sold as FNE licenses only.

Starting in april 2022, new released software versions will not run with the old and less secure FlexNet Publisher machine based licenses anymore. Instead, a FlexNet Embedded machine based license is needed.

In order to migrate your license, a valid maintenance contract needs to be in place for the respective software license.

Therefore you should migrate all your FNP machine based licenses to FNE licenses if you want to use your ETAS product together with future updates. This can be done using the Online or Offline Migration commands in ETAS License Manager.

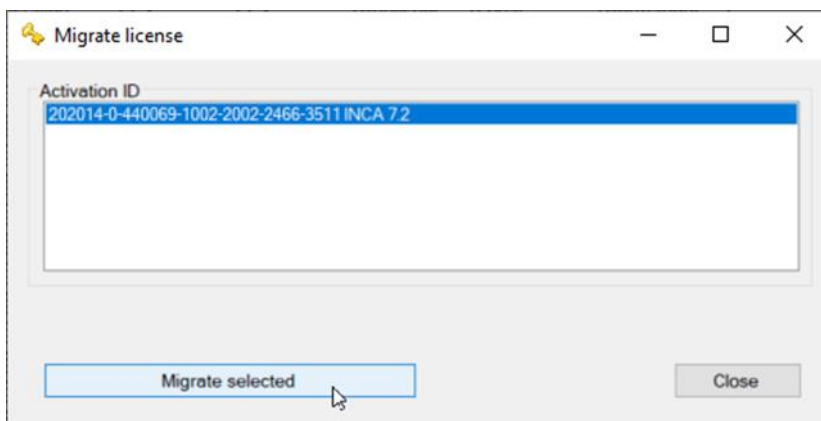
Migration for server based licenses (e.g. user or floating) will follow later.

### 2.4.1 Online Migration

The online migration is the most convenient way of migration.

Note: A connection to the Internet is needed.

- Go to “Device -> Online Migration...”
- The upcoming dialog shows activation ID, feature name and version for each feature that can be migrated in a separate line
- Select the items that you want to migrate and click on “Migrate selected”



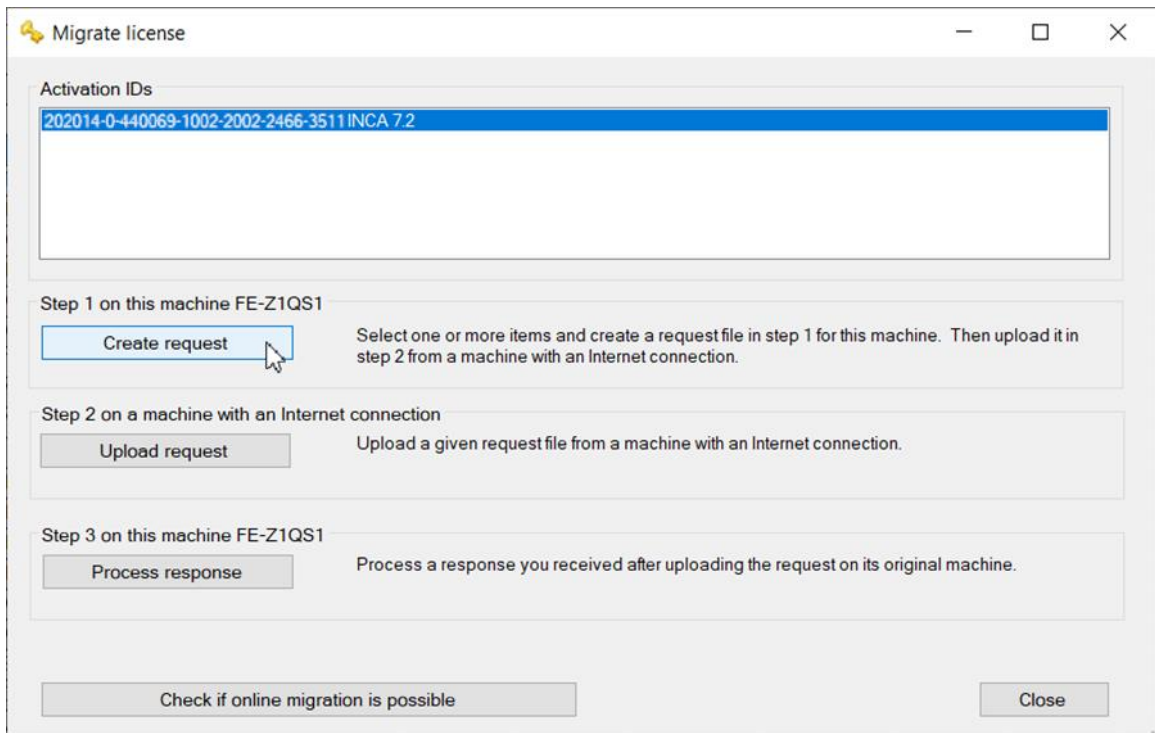
After successful migration a message box appears.



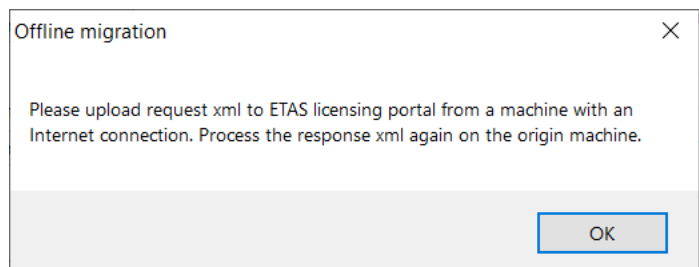
## 2.4.2 Offline Migration

If there is no internet connection available on the PC running ETAS software you can use the offline migration, where another PC is used to transmit the data to the ETAS License & Download Portal.

- Go to “Device -> Offline Migration...”
- The upcoming dialog shows activation ID, feature name and version for each feature that can be migrated in a separate line
- Select the items that you want to migrate and click on “Create request”



- LiMa will ask you for a location to store a file containing the migration request
- Copy this file to another machine with internet access



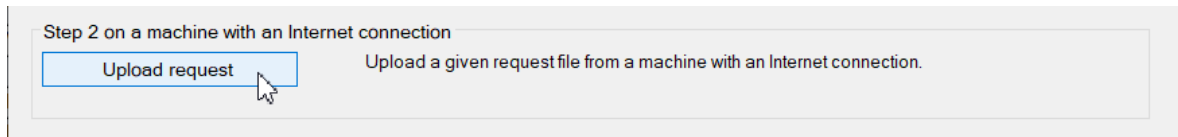
### On the PC with internet access:

Note: In the “migration case” the data cannot be uploaded manually to the ETAS License & Download Portal but needs ETAS License Manager to perform this action.

You can download the ETAS License Manager separately from this link:

<https://www.etas.com/de/downloadcenter/37859.php>

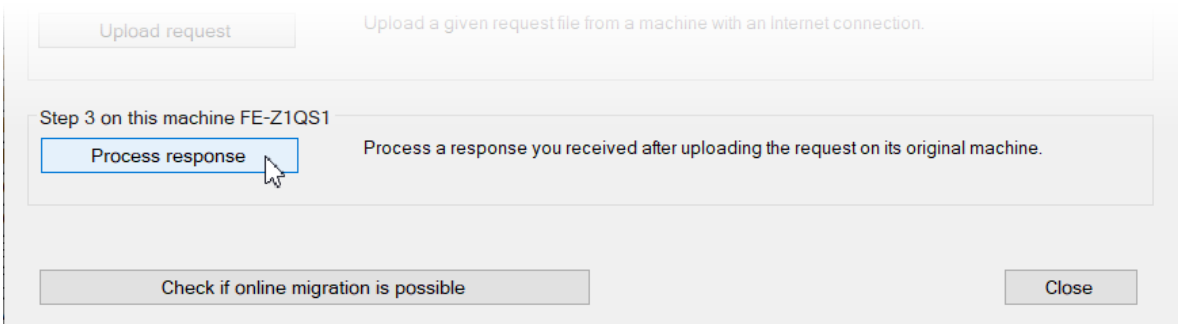
- Start ETAS License Manager
- Go to “Device -> Offline Migration...”
- Use “Upload Request” to upload the file that contains the migration information



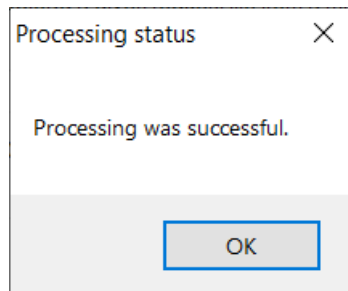
- LiMa will ask you for a location to save a file received from the ETAS license portal (no manual login is necessary)
- Copy this file to the computer which had the request for a license

**Back on the original computer:**

- In the "Migrate license" dialog in LiMa, click on "Process response"
- Select the file that was copied in the previous step



- You will see a message indicating success:



After successful activation or migration you will see your license type as "embedded":

Example:

	Product	Feature	Status	Feature Version	Operating Version	Type	Source	Expiration Date
✓	INCA	INCA	Installed	7.2	7.2	Embedded	Local	Permanent

### 3 Contact Information

---

#### ETAS Headquarters

ETAS GmbH

Borsigstraße 24

70469 Stuttgart

Germany

Phone: +49 711 3423-0

Fax: +49 711 3423-2106

Internet: [www.etas.com](http://www.etas.com)

#### ETAS Subsidiaries and Technical Support

For details of your local sales office as well as your local technical support team and product hotlines, take a look at the ETAS website:

ETAS subsidiaries                      Internet: [www.etas.com/en/contact.php](http://www.etas.com/en/contact.php)

ETAS technical support                Internet: [www.etas.com/en/hotlines.php](http://www.etas.com/en/hotlines.php)