

# The EATB – a faster way of combing through mass data

## An efficiency-enhancing tool for developers and quality management

Andreas Klegraf is responsible for the Enterprise Data Analytics Toolbox in the Product Management Integration and User Experience unit at ETAS GmbH

The Enterprise Data Analytics Toolbox (EATB) quickly identifies key points in vast sets of measured data and performs statistical analyses. It also generates reports with compelling graphics for instant use in presentations given for management or customers. These time-saving features are a significant advantage to developers in their demanding daily work.



Take, for example, a usage scenario involving a recently road-tested new brake system. Several terabytes of measured data were loaded to a server. The next step is to start the workflow that the brake designer has come to know and appreciate. The designer opens the ETAS Enterprise Data Analytics Toolbox (EATB), selects a template with predefined criteria for assessment, and runs the analysis. The program soon identifies all points in this vast set of measured data where parameters need to be adjusted, and generates an interactive graphical report.

The EATB visualizes statistical analyses for both physical and computed signals. It also

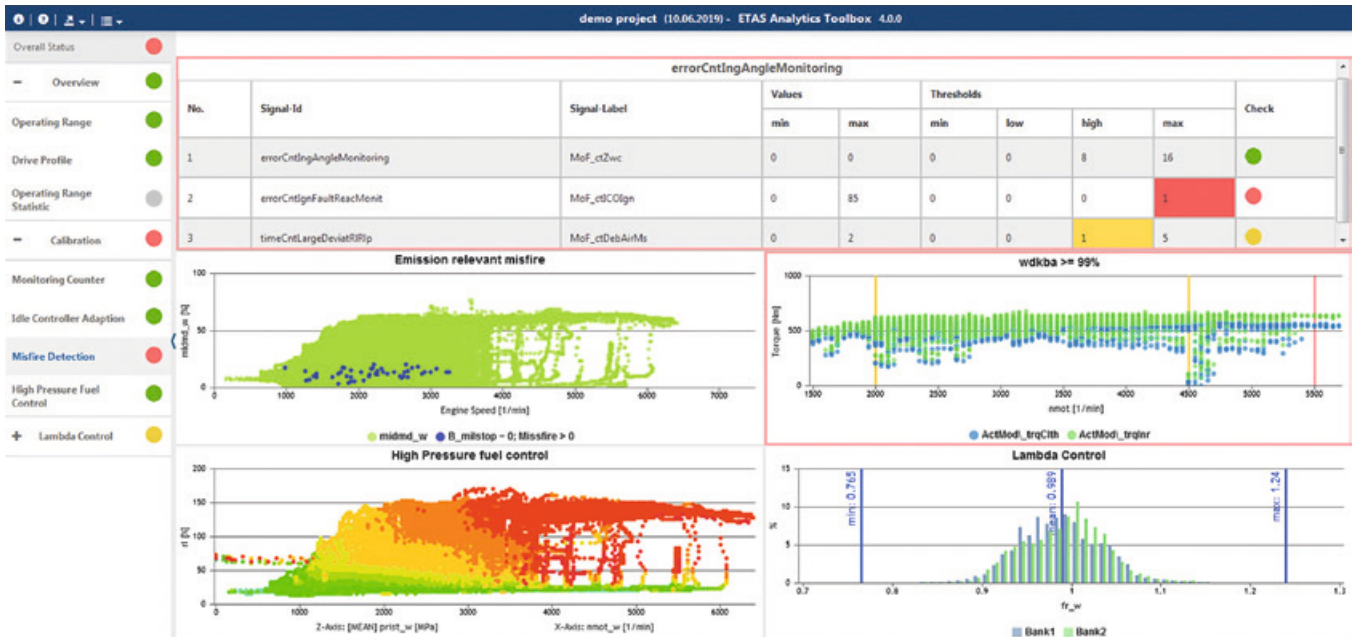
displays the timeline and threshold events where values exceed the limits. A traffic light provides a clear indication of the status. Green means the calibration is good to go, with no need to take further action. Yellow indicates variance within a certain range of the threshold. Red indicates a deviation extending beyond the threshold value.

The data are evaluated automatically at the touch of a button, in a fraction of the time required for manual analysis. This key function of the EATB addresses the needs of application and validation engineers, project managers, and quality assurance teams. They all receive reliable insight into measured data in

a minimum of time, which is a big advantage considering the short development lead times and increasing volume of data in today's development environment.

This report is a great help to the developer, who can then view and edit functions at the parameter level in the Measure Data Analyzer (MDA). Now in its eighth generation, this ETAS tool delivers even higher performance. With this combination of preliminary analysis and focused deep dive, the engineer is able to work quickly, yet with great precision.

The generated reports are flexibly configurable. Another great advantage is that they



Insight at a glance: The Enterprise Data Analytics Toolbox's green, yellow, and red color coding provides a fast, efficient way of analyzing measured data.

are interactive. A specialist can easily zoom in on any dataset to see the results in higher resolution. Other tools' PDF reports lack this capability.

With the current status so easily ascertained, these reports also support efficient communication. Generated in lean HTML5 format and stored on a web server, they are readily accessible to everyone with a stake in the project and viewable in any standard Internet browser, even on mobile devices. The reports can be integrated into presentations without further editing or formatting.

Developed with users for users, the EATB is the result of practical experience. The measure data format (MDF) can be read and processed directly. The EATB is compatible with data sourced from the ETAS INCA software and other systems.

The templates used by the EATB offer many more benefits. Ideally, a MATLAB user configures a customer-specific set of criteria for analysis in the given template. Once the know-how needed for key development steps is captured, all developers can benefit from the knowledge archived in the template library. Templates may be adapted for new tasks simply by modifying a few details. The toolbox comes with a manual for creating templates. Template training and services are also available.

The bottom line: ETAS' Enterprise Data Analytics Toolbox is a powerful tool that quickly analyzes even large amounts of measured data. Its traffic-light color coding makes it easy to spot actionable areas. The EATB offers great potential for boosting efficiency. The reports it creates may be embedded directly in presentations. They also satisfy documentation

requirements. Many departments at Robert Bosch GmbH already use the EATB. Efforts are underway to ensure future versions of the toolbox will be usable in the cloud and ready for big data use cases. In this way, the EATB fits seamlessly into a fully virtual and accelerated test environment, where it can also show its strengths.

Website

ETAS GmbH  
www.etas.com



LIGHTER | STRONGER | SAFER | QUIETER | GREENER

## BETTER VEHICLES **START WITH SIKA**

- Body Shop Structural Inserts
- Acoustic Systems
- Body Shop Adhesives
- Glass Bonding & Assembly Line Adhesives
- Exterior Adhesives
- Paint Shop Sealants

